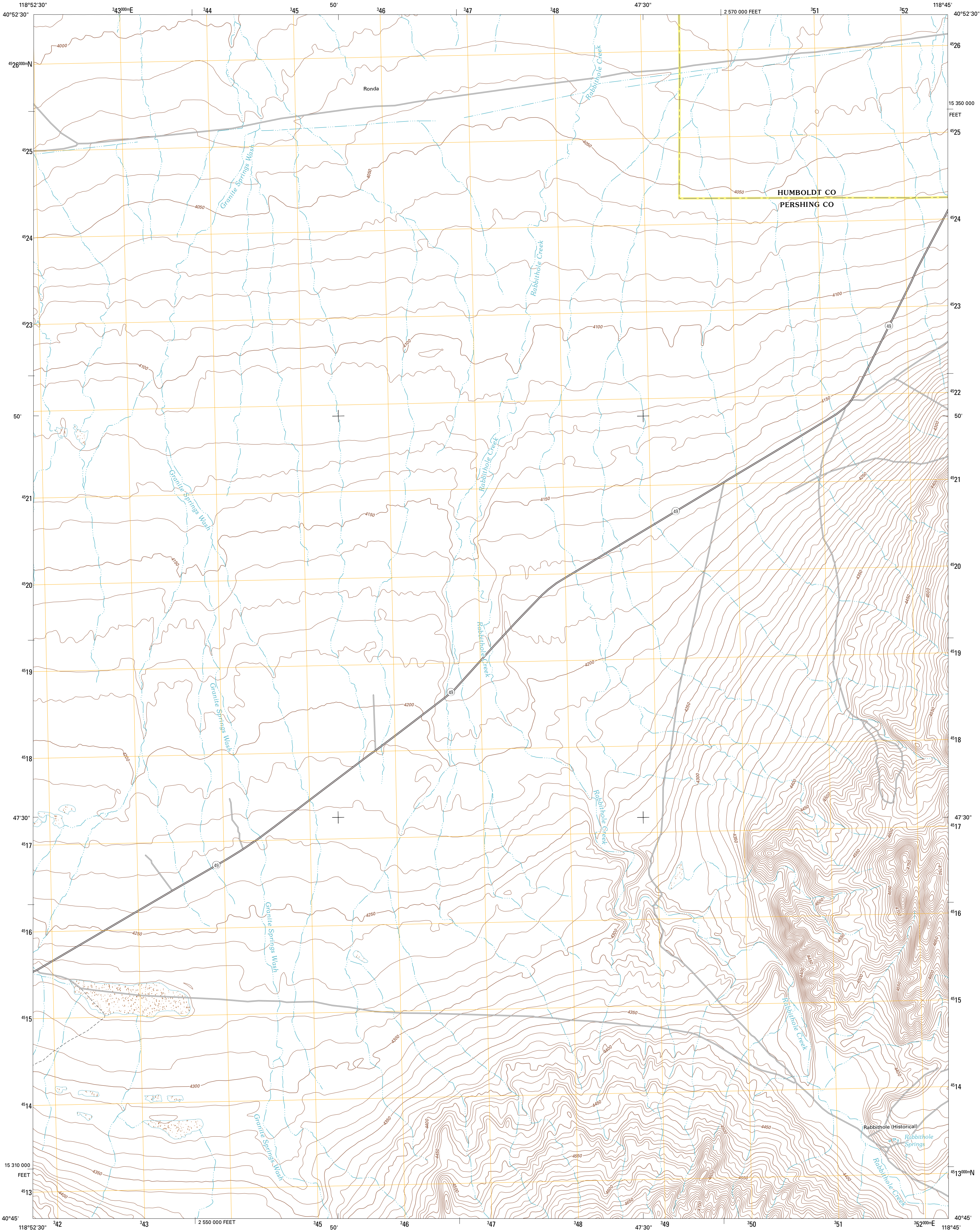




U.S. DEPARTMENT OF THE INTERIOR
U. S. GEOLOGICAL SURVEY



RABBITHOLE QUADRANGLE
NEVADA
7.5-MINUTE SERIES



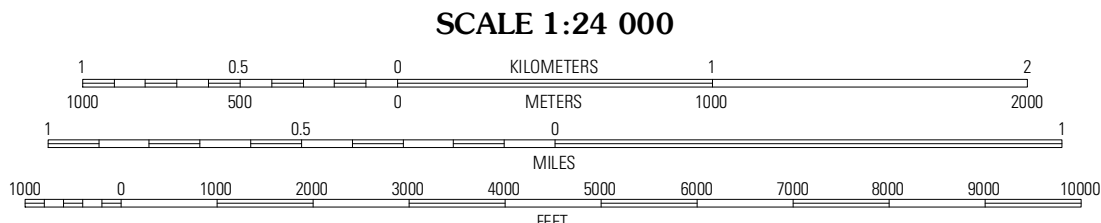
Produced by the United States Geological Survey
North American Datum of 1983 (NAD83)
World Geodetic System of 1984 (WGS84). Projection and
1 000-meter grid: Universal Transverse Mercator, Zone 11T
10 000-foot ticks: Nevada Coordinate System of 1983 (west
zone)

Imagery.....NAIP, June 2010
Roads.....©2006-2011 TomTom
Names.....GNS, 2011
Hydrography.....National Hydrography Dataset, 2010
Contours.....National Elevation Dataset, 2001
Boundaries.....Census, IBWC, IBC, USGS, 1972 - 2010

UTM GRID AND 2011 MAGNETIC NORTH
DECLINATION AT CENTER OF SHEET

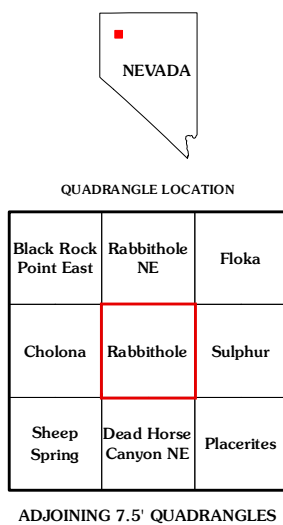
MN
ON
11° 51' 15" N
141° 15' 15" E
254 MILS

U.S. National Grid
100,000-m Square ID
1F
Grid Zone Designation
11T



CONTOUR INTERVAL 10 FEET
NORTH AMERICAN VERTICAL DATUM OF 1988

This map was produced to conform with the
National Geospatial Program US Topo Product Standard, 2011.
A metadata file associated with this product is draft version 0.6.1



ROAD CLASSIFICATION

Interstate Route
US Route
Ramp

State Route
Local Road
4WD

| | | |
|--------------|----------------------|-----------|
| Black Rock | Rabbit Hole | Floka |
| Point East | NE | |
| Cholona | Rabbit Hole | Sulphur |
| Sheep Spring | Dead Horse Canyon NE | Placeries |

RABBITHOLE, NV
2011