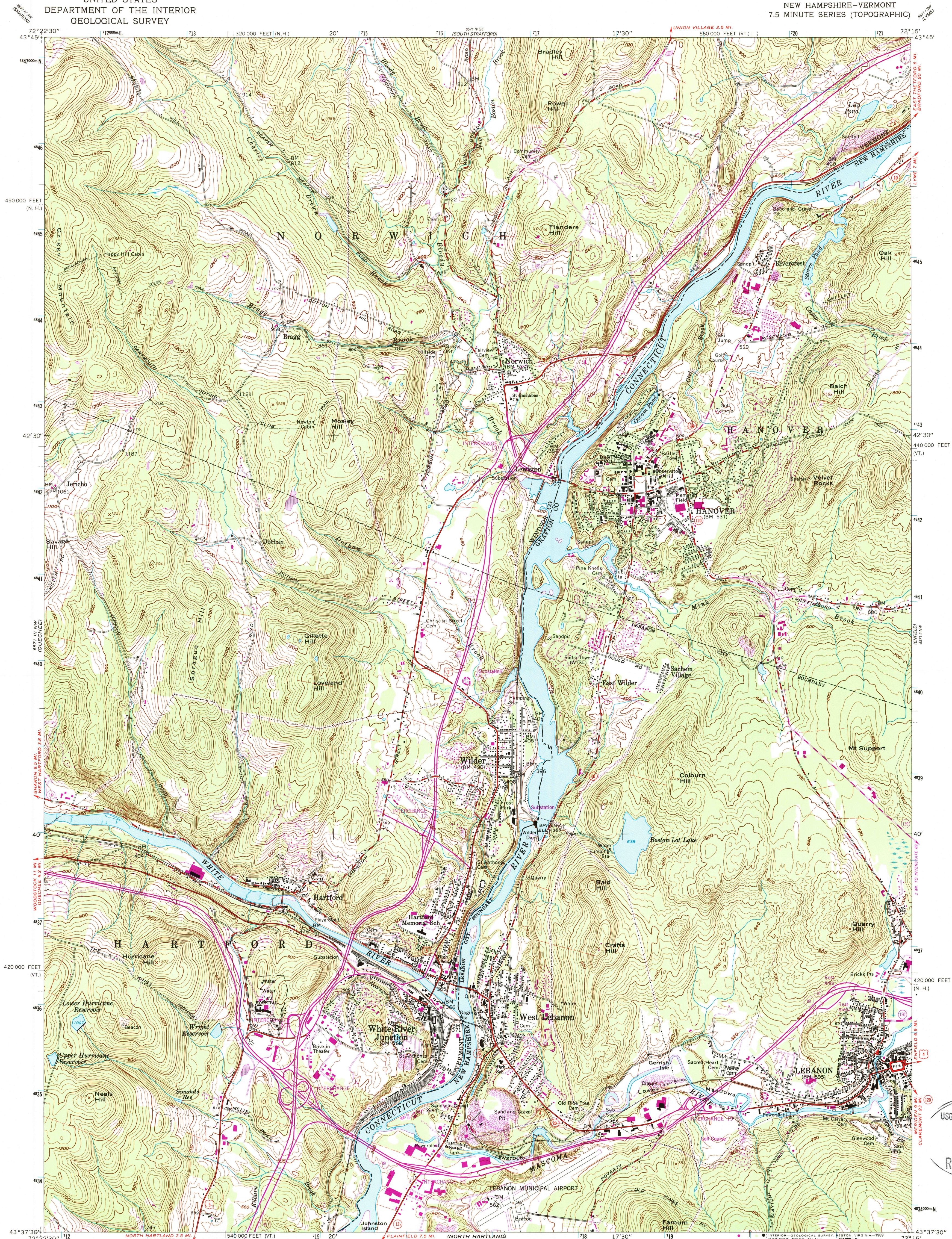
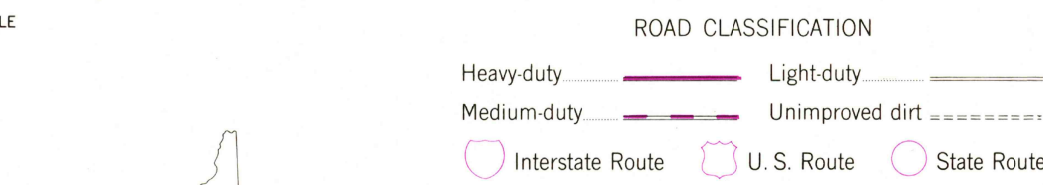
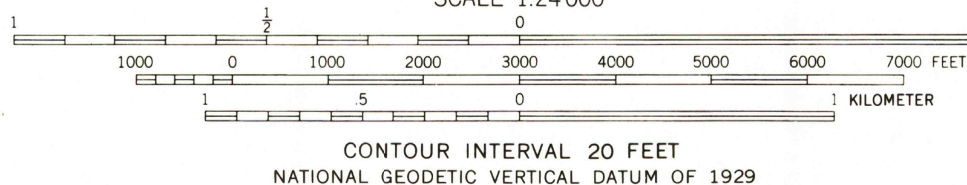
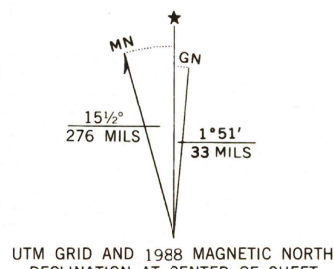


UNITED STATES
DEPARTMENT OF THE INTERIOR
GEOLOGICAL SURVEY

HANOVER QUADRANGLE
NEW HAMPSHIRE-VERMONT
7.5 MINUTE SERIES (TOPOGRAPHIC)



Mapped, edited, and published by the Geological Survey
Control by USGS and NOS/NOAA
Topography by photogrammetric methods from
aerial photographs taken 1956. Field checked 1959
Polyconic projection. 1927 North American Datum
10,000-foot grid ticks based on Vermont and New Hampshire
coordinate systems
1000-meter Universal Transverse Mercator grid ticks,
zone 18, shown in blue
To place on the predicted North American Datum 1983
move the projection lines 3 meters south and
37 meters west as shown by dashed corner ticks
Fine red dashed lines indicate selected fence and field lines where
generally visible on aerial photographs. This information is unchecked
There may be private inholdings within the boundaries
of the National or State reservations shown on this map



Revisions shown in purple and woodland compiled from
aerial photographs taken 1983 and other sources
This information not field checked. Map edited 1988

HANOVER, N. H. - VT.
43072-F3-TF-024

1959
PHOTOREVISED 1988
DMA 6571 III NE-SERIES 7813

USGS NMD HISTORICAL MAP
JUN 07 1989
REC'D FILE COPY