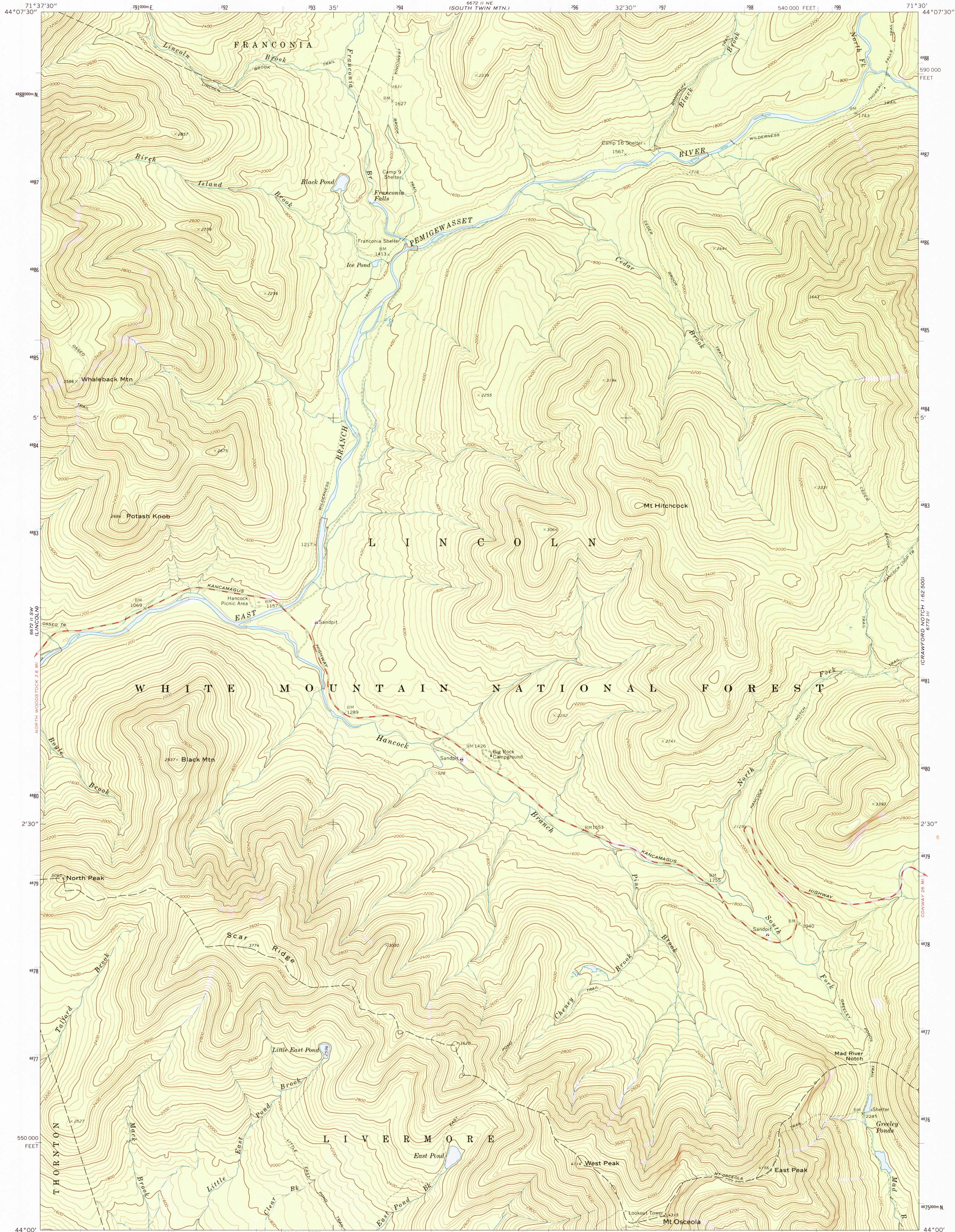


6671 II SE (FRANCONIA)

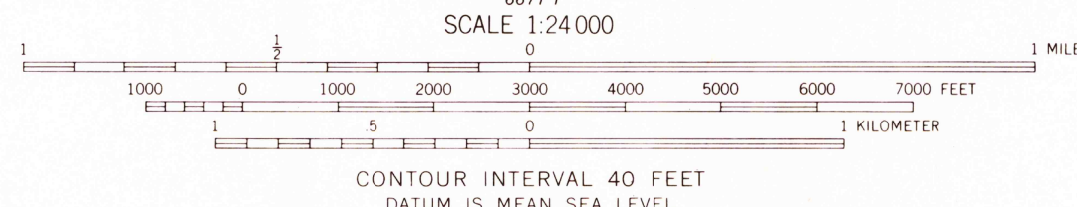
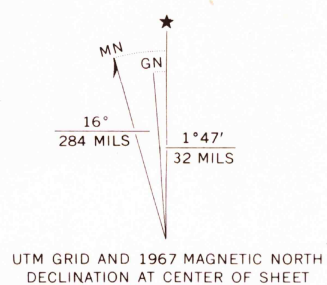
UNITED STATES  
DEPARTMENT OF THE INTERIOR  
GEOLOGICAL SURVEY

MT. OSCEOLA QUADRANGLE  
NEW HAMPSHIRE—GRAFTON CO.  
7.5 MINUTE SERIES (TOPOGRAPHIC)  
SE 1/4 FRANCONIA 15' QUADRANGLE

6771 II SE (CRAWFORD NOTCH)



Mapped, edited, and published by the Geological Survey  
Control by USGS and USC&GS  
Topography by photogrammetric methods from aerial  
photographs taken 1964. Field checked 1967  
Polyconic projection. 1927 North American datum  
10,000-foot grid based on New Hampshire coordinate system  
1000-meter Universal Transverse Mercator grid ticks,  
zone 19, shown in blue  
Map photoinspected 1983  
No major culture or drainage changes observed



ROAD CLASSIFICATION  
Primary highway, hard surface  
Secondary highway, hard surface  
Light duty road, hard or improved surface  
Unimproved road  
Interstate Route  
U. S. Route  
State Route

THIS MAP COMPLIES WITH NATIONAL MAP ACCURACY STANDARDS  
FOR SALE BY U. S. GEOLOGICAL SURVEY  
DENVER, COLORADO 80225, OR RESTON, VIRGINIA 22092  
A FOLDER DESCRIBING TOPOGRAPHIC MAPS AND SYMBOLS IS AVAILABLE ON REQUEST

USGS NMD HISTORICAL MAP  
FEB 15 1991  
REC'D FILE COPY

MT. OSCEOLA, N. H.  
SE 1/4 FRANCONIA 15' QUADRANGLE  
N4400—W7130/7.5  
1967  
PHOTOINSPECTED 1983  
AMS 6672 II SE—SERIES V812