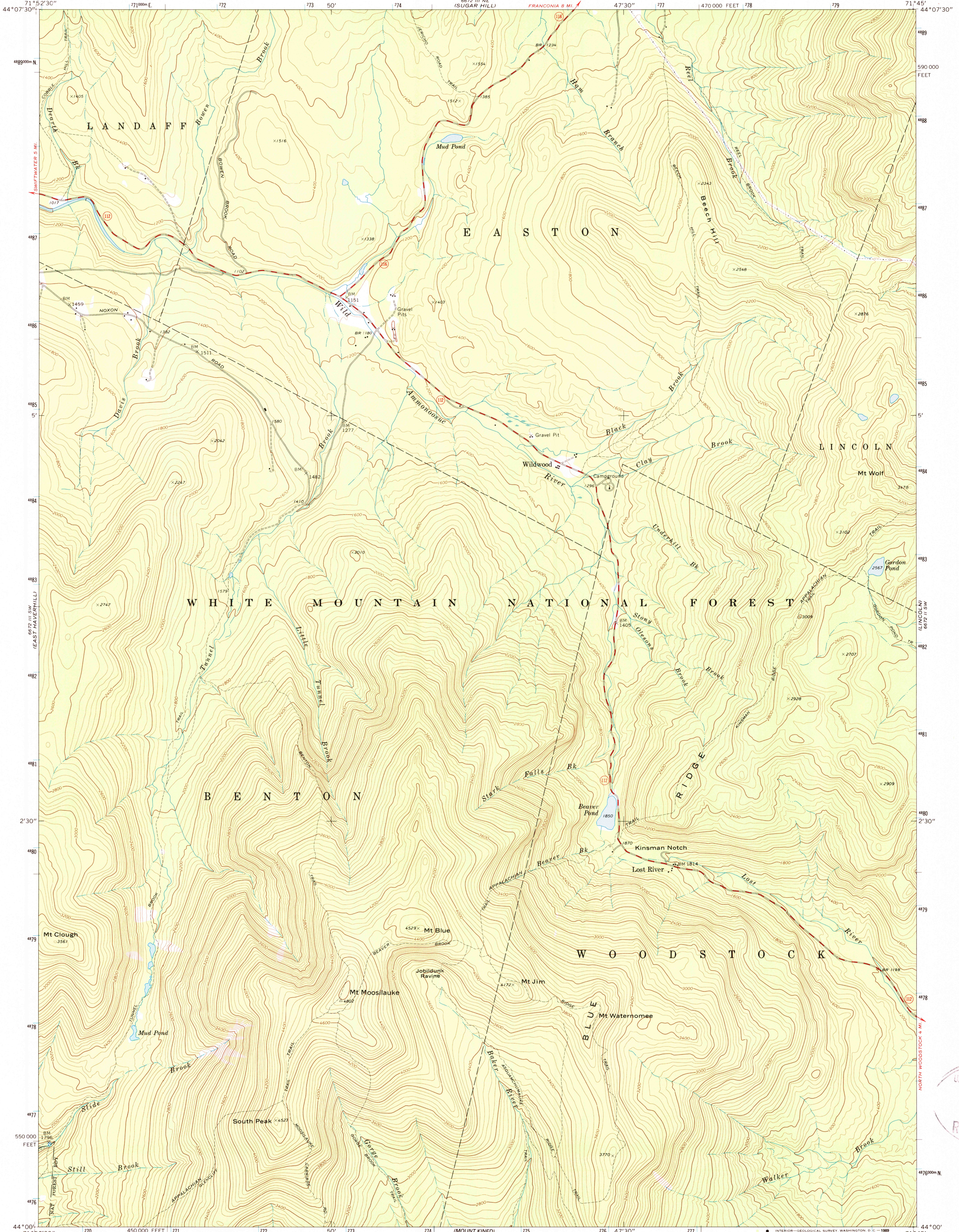


6672 III SE  
(LUSBOY)

UNITED STATES  
DEPARTMENT OF THE INTERIOR  
GEOLOGICAL SURVEY

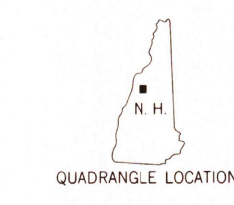
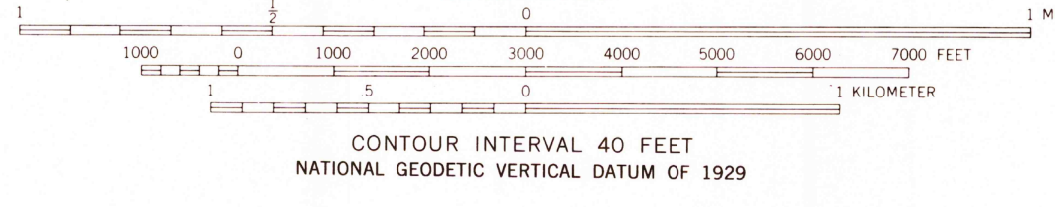
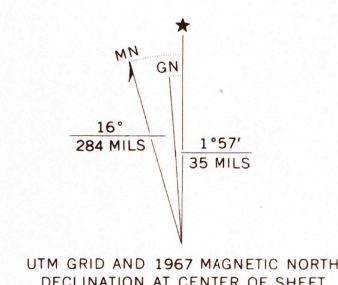
MT. MOOSILAUK QUADRANGLE  
NEW HAMPSHIRE—GRAFTON CO.  
7.5 MINUTE SERIES (TOPOGRAPHIC)  
SE/4 MOOSILAUK 15' QUADRANGLE

6672 III SE  
(FRANCONIA)



(WARREN)  
6672 IV NW

Mapped, edited, and published by the Geological Survey  
Control by USGS and USC&GS  
Topography by photogrammetric methods from aerial  
photographs taken 1964. Field checked 1967  
Polyconic projection. 1927 North American datum  
10,000-foot grid based on New Hampshire coordinate system,  
1000-meter Universal Transverse Mercator grid ticks,  
zone 19, shown in blue  
To place on the predicted North American Datum 1983  
move the projection lines 3 meters south and  
38 meters west as shown by dashed corner ticks



ROAD CLASSIFICATION

Primary highway, hard surface	Light-duty road, hard or improved surface
Secondary highway, hard surface	Unimproved road
Interstate Route	U. S. Route
	State Route

MT. MOOSILAUK, N. H.  
SE/4 MOOSILAUK 15' QUADRANGLE  
44071A7-TF-024  
1967  
DMA 6672 III SE—SERIES V812

THIS MAP COMPLIES WITH NATIONAL MAP ACCURACY STANDARDS  
FOR SALE BY U. S. GEOLOGICAL SURVEY  
DENVER, COLORADO 80225, OR RESTON, VIRGINIA 22092  
A FOLDER DESCRIBING TOPOGRAPHIC MAPS AND SYMBOLS IS AVAILABLE ON REQUEST

USGS NMD HISTORICAL MAP  
MAR 0 1 1989  
REC'D FILE COPY