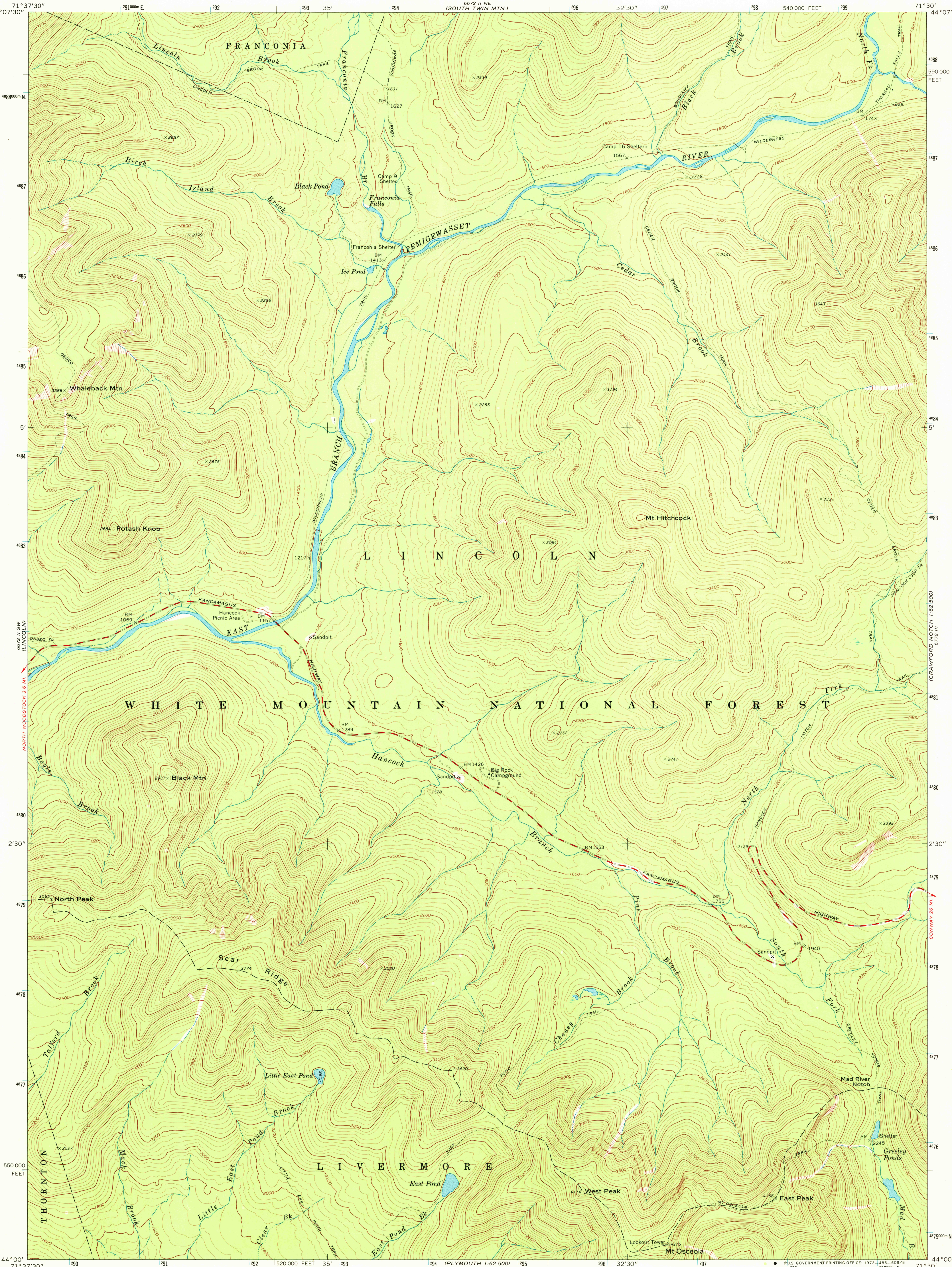


6772 II NW
(FRANCONIA)
1:62,500

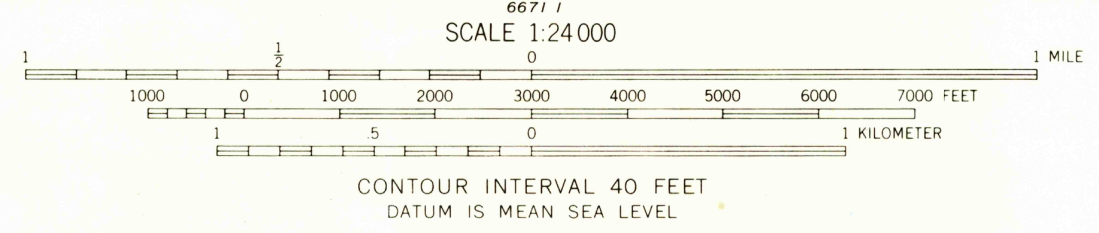
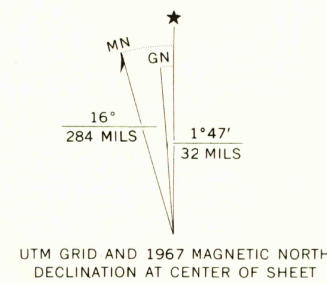
6772 II NW
(MT. OSCEOLA)
1:62,500

W 41 H
4000

FEB 2 1973



Mapped, edited, and published by the Geological Survey
Control by USGS and USC&GS
Topography by photogrammetric methods from aerial
photographs taken 1964. Field checked 1967
Polyconic projection, 1927 North American datum
10,000-foot grid based on New Hampshire coordinate system
1000-meter Universal Transverse Mercator grid ticks,
zone 19, shown in blue



ROAD CLASSIFICATION

| | |
|------------------------------------|--|
| Primary highway, hard surface | Light-duty road, hard or improved surface |
| Secondary highway, hard surface | Unimproved road |
| Interstate Route | U. S. Route |
| | State Route |



THIS MAP COMPLIES WITH NATIONAL MAP ACCURACY STANDARDS
FOR SALE BY U. S. GEOLOGICAL SURVEY, WASHINGTON, D. C. 20242
A FOLDER DESCRIBING TOPOGRAPHIC MAPS AND SYMBOLS IS AVAILABLE ON REQUEST

MT. OSCEOLA, N. H.
SE/4 FRANCONIA 15' QUADRANGLE
N4400—W7130/7.5

1967

AMS 6672 II SE—SERIES V812