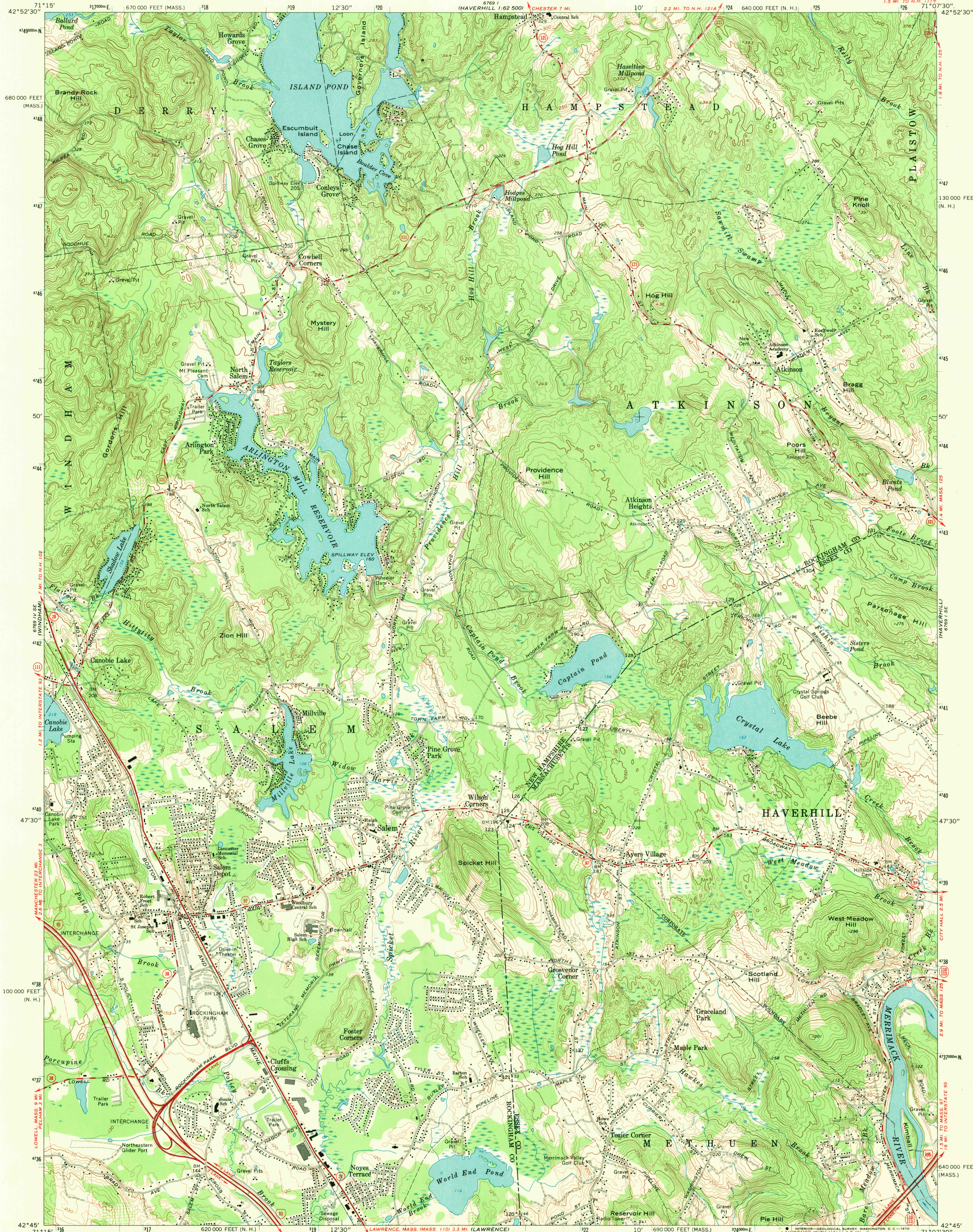


UNITED STATES
DEPARTMENT OF THE INTERIOR
GEOLOGICAL SURVEY

SALEM DEPOT QUADRANGLE
NEW HAMPSHIRE—MASSACHUSETTS
7.5 MINUTE SERIES (TOPOGRAPHIC)



Mapped, edited, and published by the Geological Survey
in cooperation with Massachusetts Department of Public Works
Control by USGS, USC&GS, New Hampshire Geodetic Survey,
and Massachusetts Geodetic Survey
Topography in New Hampshire by photogrammetric methods from aerial
photographs taken 1953. Field checked 1954-1955
Topography in Massachusetts by planetable surveys 1942
Revised from aerial photographs taken 1966. Field checked 1968
Polyconic projection. 1927 North American datum
10,000-foot grids based on New Hampshire coordinate system
and Massachusetts coordinate system, mainland zone
1000-meter Universal Transverse Mercator grid ticks,
zone 19, shown in blue
Fine red dashed lines indicate selected fence and field lines where
generally visible on aerial photographs. This information is unchecked

THIS MAP COMPLIES WITH NATIONAL MAP ACCURACY STANDARDS
FOR SALE BY U.S. GEOLOGICAL SURVEY, WASHINGTON, D.C. 20242
A FOLDER DESCRIBING TOPOGRAPHIC MAPS AND SYMBOLS IS AVAILABLE ON REQUEST

ROAD CLASSIFICATION
Primary highway, all weather, hard surface
Secondary highway, all weather, hard surface
Light-duty road, all weather, improved surface
Unimproved road, fair or dry weather
Interstate Route
State Route

SALEM DEPOT, N.H.—MASS.
(FORMERLY AYER'S VILLAGE)
SW/4 HAVERHILL 15' QUADRANGLE
N4245—W7107.5/7.5
1968
AMS 6769 1 SW—SERIES V812

U.S.G.S.
FILE COPY
TOPOGRAPHIC DIVISION

APR 28 1970