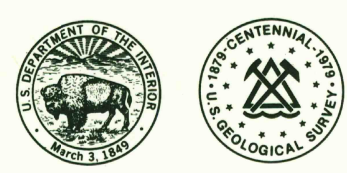


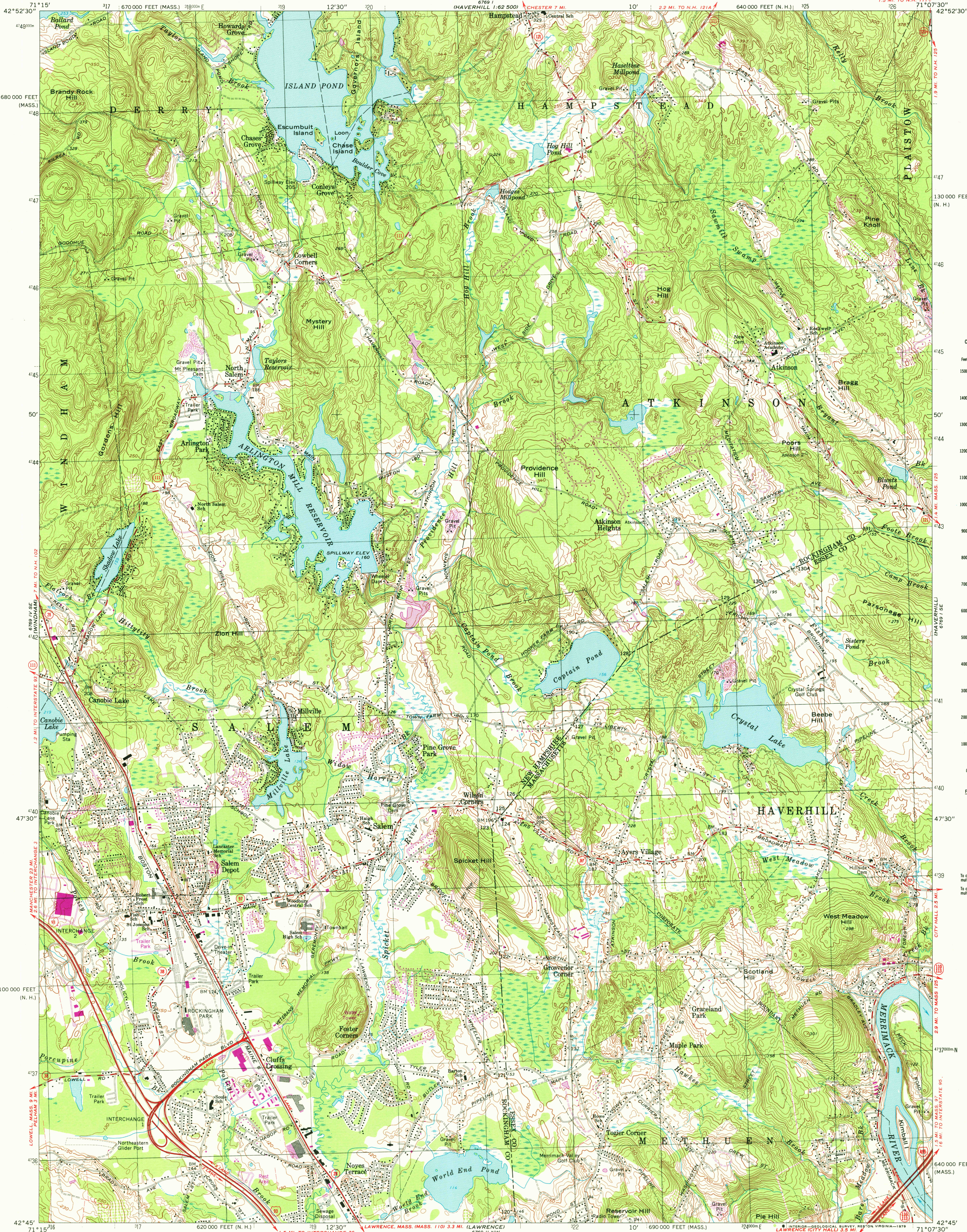
689 1/4 SE  
DERBY

UNITED STATES  
DEPARTMENT OF THE INTERIOR  
GEOLOGICAL SURVEY

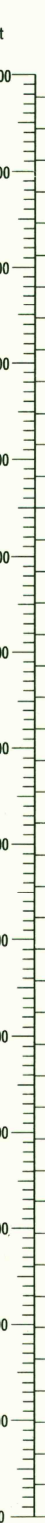


SALEM DEPOT QUADRANGLE  
NEW HAMPSHIRE—MASSACHUSETTS  
7.5 MINUTE SERIES (TOPOGRAPHIC)  
SW/4 HAVERHILL 15' QUADRANGLE

689 1/4 SE  
HAVERHILL 15' QUADRANGLE



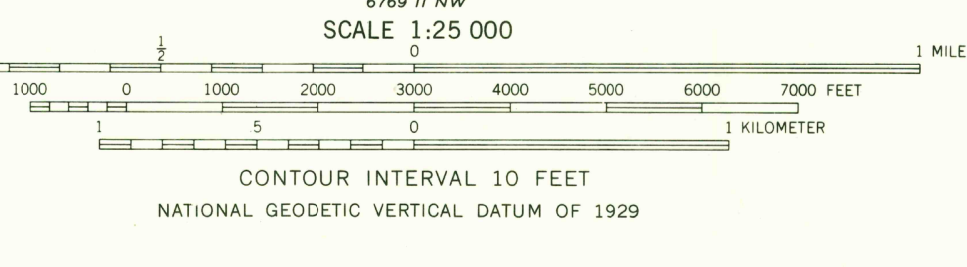
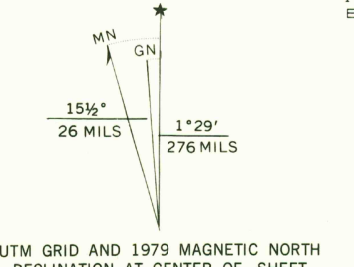
CONVERSION  
SCALES



To convert feet to meters  
multiply by 3.048

To convert meters to feet  
multiply by 3.2808

Maped, edited, and published by the Geological Survey  
in cooperation with Massachusetts Department of Public Works  
Control by USGS, USCGS, New Hampshire Geodetic Survey,  
and Massachusetts Geodetic Survey  
Topography in New Hampshire by photogrammetric methods from aerial  
photographs taken 1953. Field checked 1954-1955  
Topography in Massachusetts by planimetric surveys 1942  
Revised from aerial photographs taken 1966. Field checked 1968  
Polyconic projection. 1927 North American datum  
10,000-foot grids based on New Hampshire coordinate system  
and Massachusetts coordinate system, mainland zone  
1000-meter Universal Transverse Mercator grid,  
zone 19  
Fine red dashed lines indicate selected fence and field lines where  
generally visible on aerial photographs. This information is unchecked



THIS MAP COMPLIES WITH NATIONAL MAP ACCURACY STANDARDS  
FOR SALE BY U. S. GEOLOGICAL SURVEY, RESTON, VIRGINIA 22092  
A FOLDER DESCRIBING TOPOGRAPHIC MAPS AND SYMBOLS IS AVAILABLE ON REQUEST

Revisions shown in purple compiled in cooperation with State of  
Massachusetts agencies from aerial photographs taken 1977 and other  
source data. This information not field checked. Map edited 1979



ROAD CLASSIFICATION  
Primary highway, all weather, hard surface  
Secondary highway, all weather, hard surface  
Light-duty road, all weather, improved surface  
Unimproved road, fair or dry weather  
Interstate Route  
State Route  
USGS  
Historical File  
Topographic Division  
SALEM DEPOT, N. H. — MASS  
(FORMERLY AYERS VILLAGE)  
SW/4 HAVERHILL 15' QUADRANGLE  
N4245—W7107.5/7.5  
1968  
PHOTOREVISED 1979  
AMS 6769 1 SW—SERIES V812

FEB - 5 1980

2600