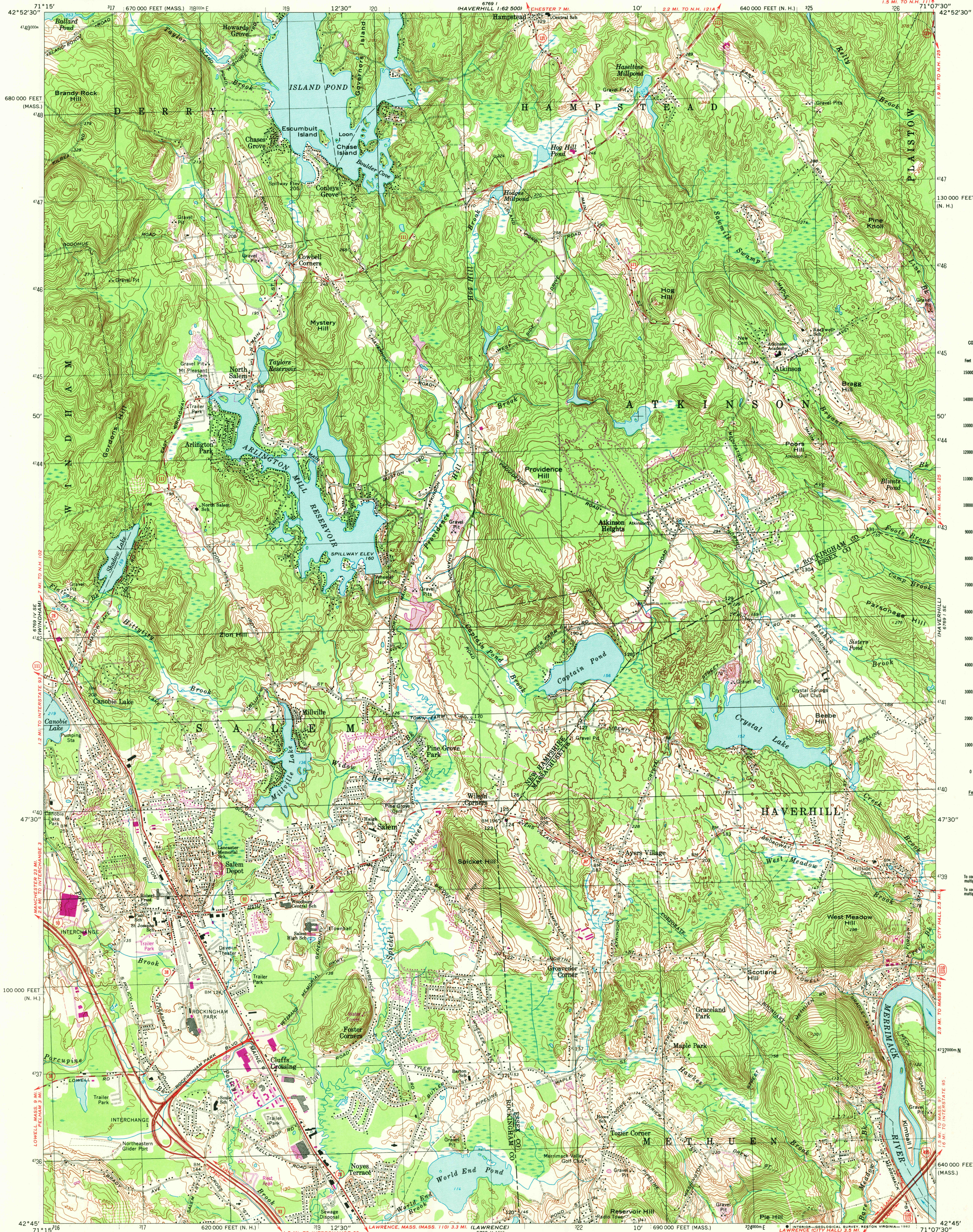


UNITED STATES
DEPARTMENT OF THE INTERIOR
GEOLOGICAL SURVEY

SALEM DEPOT QUADRANGLE
NEW HAMPSHIRE—MASSACHUSETTS
7.5 MINUTE SERIES (TOPOGRAPHIC)



CONVERSION
SCALES

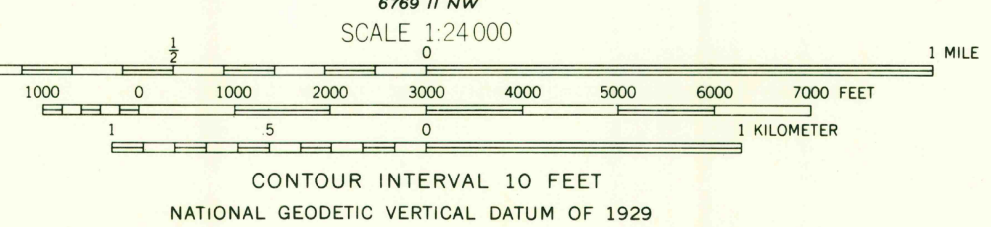
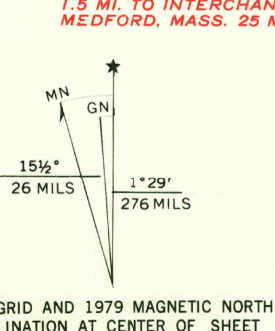


Feet	Meters
1	0.3048
2	0.6096
3	0.9144
4	1.2192
5	1.5240
6	1.8288
7	2.1336
8	2.4384
9	2.7432
10	3.0480

To convert feet to meters
multiply by 0.3048

To convert meters to feet
multiply by 3.2808

Mapped, edited, and published by the Geological Survey
in cooperation with Massachusetts Department of Public Works
Control by USGS, USC&GS, New Hampshire Geodetic Survey,
and Massachusetts Geodetic Survey
Topography in New Hampshire by photogrammetric methods from aerial
photographs taken 1953. Field checked 1954-1955
Topography in Massachusetts by planimetric surveys 1942
Revised from aerial photographs taken 1966. Field checked 1968
Polyconic projection. 1927 North American datum
10,000-foot grids based on New Hampshire coordinate system and
Massachusetts coordinate system, mainland zone
1000-meter Universal Transverse Mercator grid,
zone 19
Fine red dashed lines indicate selected fence and field lines where
generally visible on aerial photographs. This information is unchecked



THIS MAP COMPLIES WITH NATIONAL MAP ACCURACY STANDARDS
FOR SALE BY U. S. GEOLOGICAL SURVEY, RESTON, VIRGINIA 22092
A FOLDER DESCRIBING TOPOGRAPHIC MAPS AND SYMBOLS IS AVAILABLE ON REQUEST

Revisions shown in purple compiled in cooperation with State of
Massachusetts agencies from aerial photographs taken 1977 and other
source data. This information not field checked. Map edited 1979

ROAD CLASSIFICATION
Primary highway, all weather, hard surface
Secondary highway, all weather, hard surface
Light-duty road, all weather, improved surface
Unimproved road, fair or dry weather
Interstate Route
State Route

SALEM DEPOT, N. H.—MASS
(FORMERLY AYERS VILLAGE)
SW/4 HAVERHILL 15' QUADRANGLE
N4245—W7107.5/7.5

1968
PHOTOREVISED 1979
AMS 6789 I SW—SERIES V812

DEC 15 1981

1600