

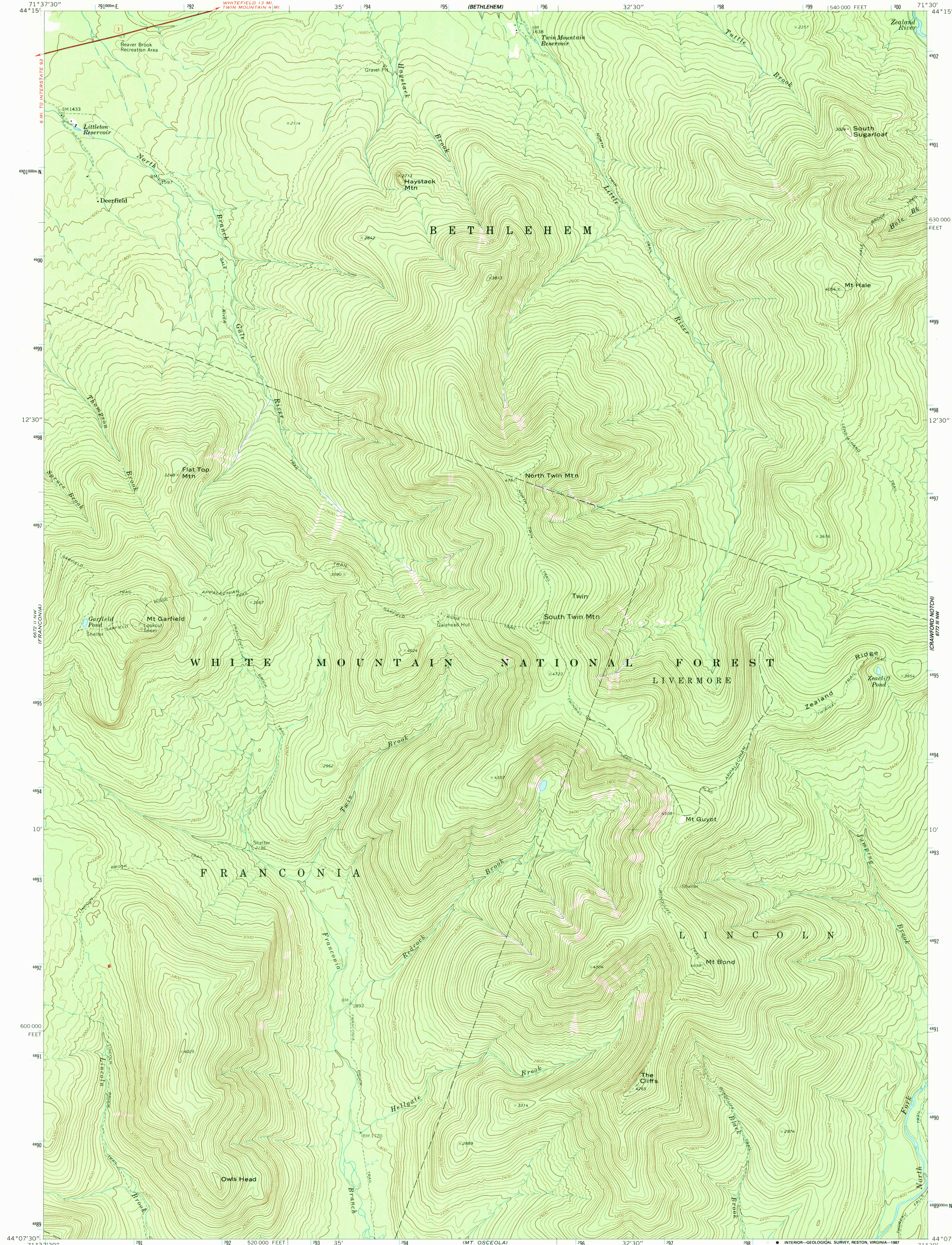
UNITED STATES
DEPARTMENT OF THE INTERIOR
GEOLOGICAL SURVEY

SOUTH TWIN MTN. QUADRANGLE
NEW HAMPSHIRE—GRAFTON CO.
7.5 MINUTE SERIES (TOPOGRAPHIC)

NE/4 FRANCONIA 15' QUADRANGLE

(MT. WASHINGTON)

(BETHLEHEM)

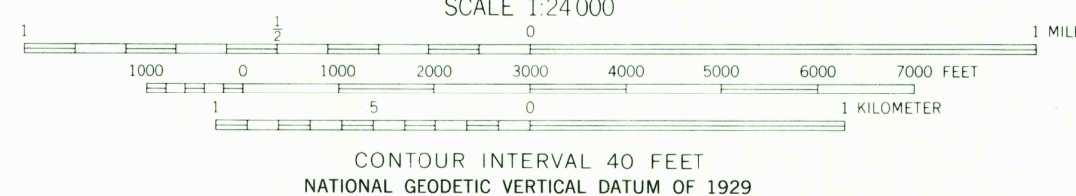
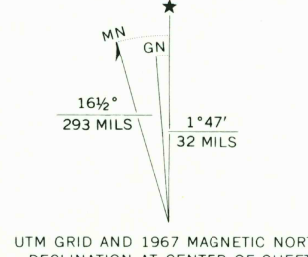


Maped, edited, and published by the Geological Survey
Control by USGS and USC&GS

Topography by photogrammetric methods from aerial photographs
taken 1964. Field checked 1967

Polyconic projection. 1927 North American datum
10,000-foot grid based on New Hampshire coordinate system
1000-meter Universal Transverse Mercator grid ticks,
zone 19, shown in blue

To place on the predicted North American Datum 1983,
move the projection lines 3 meters south and
39 meters west as shown by dashed corner ticks



ROAD CLASSIFICATION	
Primary highway, hard surface	Light-duty road, hard or improved surface
Secondary highway, hard surface	Unimproved road
Interstate Route	U. S. Route
	State Route

SOUTH TWIN MTN., N. H.
NE/4 FRANCONIA 15' QUADRANGLE
44071-B5-TF-024

1967

DMA 6672 II NE—SERIES V812

THIS MAP COMPLIES WITH NATIONAL MAP ACCURACY STANDARDS
FOR SALE BY U. S. GEOLOGICAL SURVEY, DENVER, COLORADO 80225, OR RESTON, VIRGINIA 22092
A FOLDER DESCRIBING TOPOGRAPHIC MAPS AND SYMBOLS IS AVAILABLE ON REQUEST

