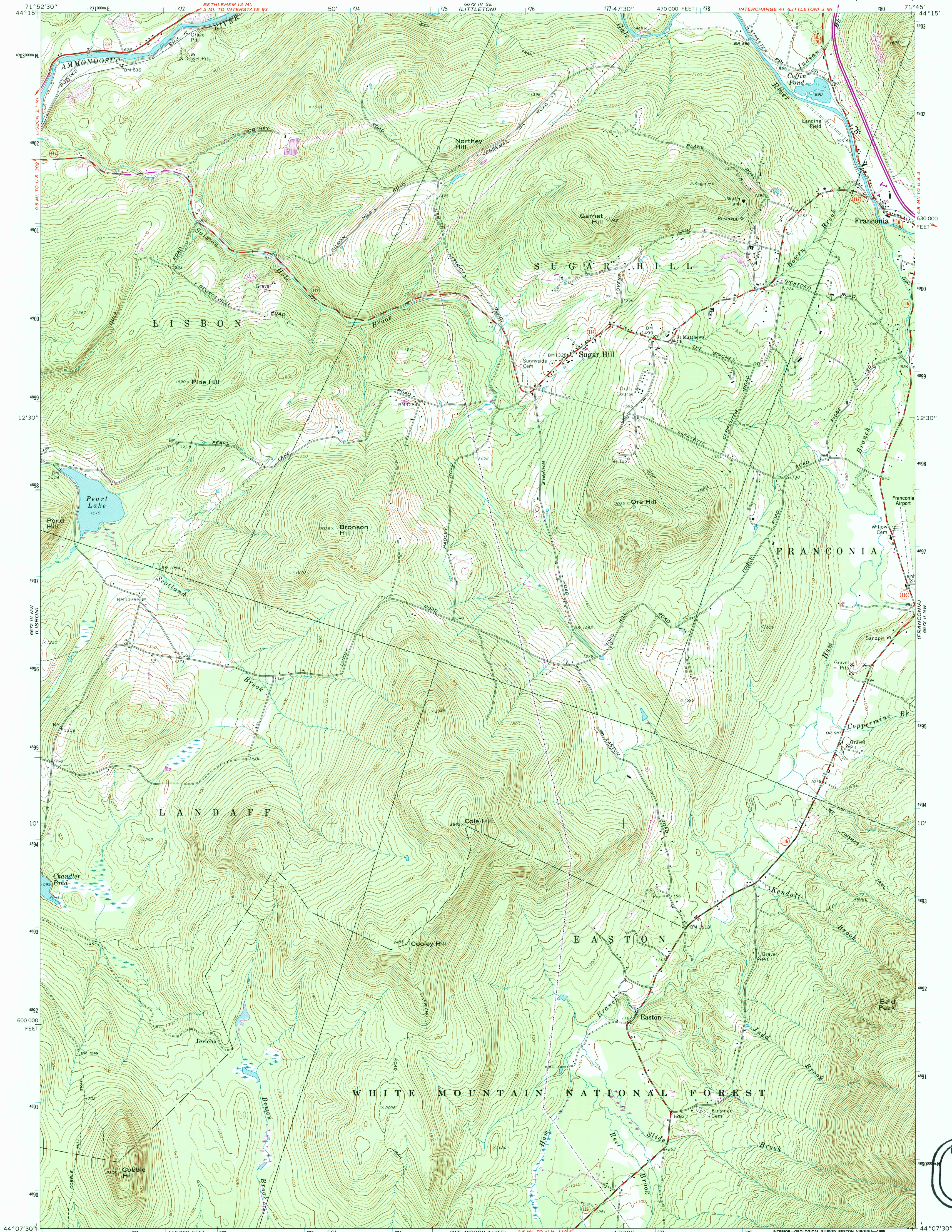


UNITED STATES
DEPARTMENT OF THE INTERIOR
GEOLOGICAL SURVEY

SUGAR HILL QUADRANGLE
NEW HAMPSHIRE—GRAFTON CO.
7.5 MINUTE SERIES (TOPOGRAPHIC)



USGS NHD HISTORICAL
MAP ARCHIVES
JUL 21 1995
REC'D FILE COPY

Mapped, edited, and published by the Geological Survey

Control by USGS and USC&GS

Topography by photogrammetric methods from aerial photographs taken 1964. Field checked 1967

Polyconic projection. 1927 North American datum

10,000-foot grid based on New Hampshire coordinate system

1000-meter Universal Transverse Mercator grid ticks, zone 19, shown in blue

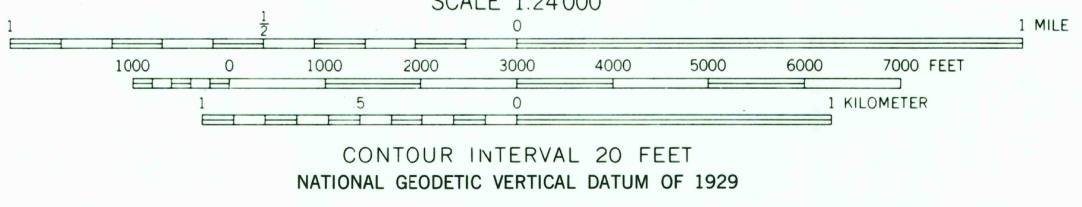
To place on the predicted North American Datum 1983

move the projection lines 3 meters south and

38 meters west as shown by dashed corner ticks

Fine red dashed lines indicate selected fence and field lines where generally visible on aerial photographs. This information is unchecked

There may be private inholdings within the boundaries of the National or State reservations shown on this map



ROAD CLASSIFICATION	
Primary highway, hard surface	Light-duty road, hard or improved surface
Secondary highway, hard surface	Unimproved road
Interstate Route	U. S. Route
	State Route



SUGAR HILL, N. H.
44071-87-TF-024

1967
PHOTOREVISED 1988
DMA 6672 III NE—SERIES V812

THIS MAP COMPLIES WITH NATIONAL MAP ACCURACY STANDARDS
FOR SALE BY U. S. GEOLOGICAL SURVEY
DENVER, COLORADO 80225 OR RESTON, VIRGINIA 22092
A FOLDER DESCRIBING TOPOGRAPHIC MAPS AND SYMBOLS IS AVAILABLE ON REQUEST

Revisions shown in purple and woodland compiled from aerial photographs taken 1983 and other sources
This information not field checked. Map edited 1988