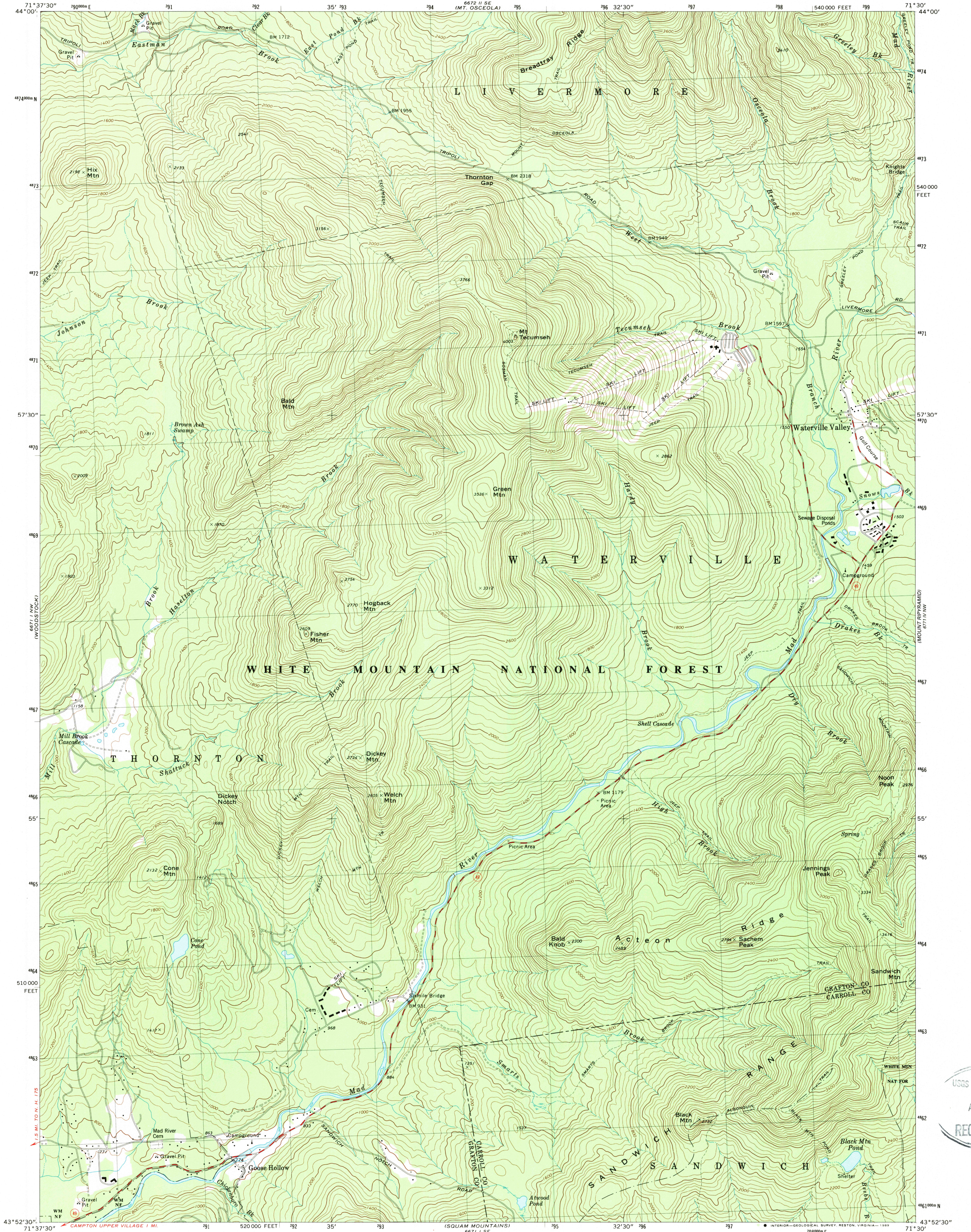


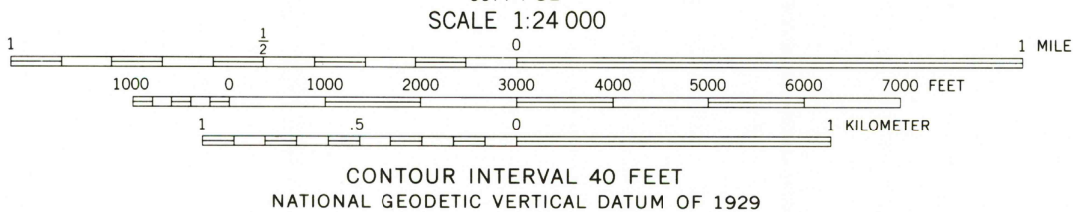
UNITED STATES
DEPARTMENT OF THE INTERIOR
GEOLOGICAL SURVEY

WATERVILLE VALLEY QUADRANGLE
NEW HAMPSHIRE
7.5 MINUTE SERIES (TOPOGRAPHIC)
NE/4 PLYMOUTH 15' QUADRANGLE



Mapped, edited, and published by the Geological Survey
Control by USGS and NOS/NOAA
Topography by photogrammetric methods from aerial photographs taken 1972. Field checked 1975. Map edited 1980
Projection and 10,000-foot grid ticks: New Hampshire coordinate system, (transverse Mercator)
1000-meter Universal Transverse Mercator grid, zone 19
1927 North American Datum
To place on the predicted North American Datum 1983 move the projection lines 3 meters south and 39 meters west as shown by dashed corner ticks
There may be private inholdings within the boundaries of the National or State reservations shown on this map

Map photinspected 1983
No major culture or drainage changes observed



ROAD CLASSIFICATION
Primary highway, hard surface
Secondary highway, hard surface
Light-duty road, hard or improved surface
Unimproved road
Interstate Route
U. S. Route
State Route



WATERVILLE VALLEY, N. H.
NE/4 PLYMOUTH 15' QUADRANGLE
4307146-1E-024
PHOTOINSPECTED 1983
1980

THIS MAP COMPLIES WITH NATIONAL MAP ACCURACY STANDARDS
FOR SALE BY U. S. GEOLOGICAL SURVEY
DENVER, COLORADO 80225, OR RESTON, VIRGINIA 22092
A FOLDER DESCRIBING TOPOGRAPHIC MAPS AND SYMBOLS IS AVAILABLE ON REQUEST

DMA 6671 I NE-SERIES V812