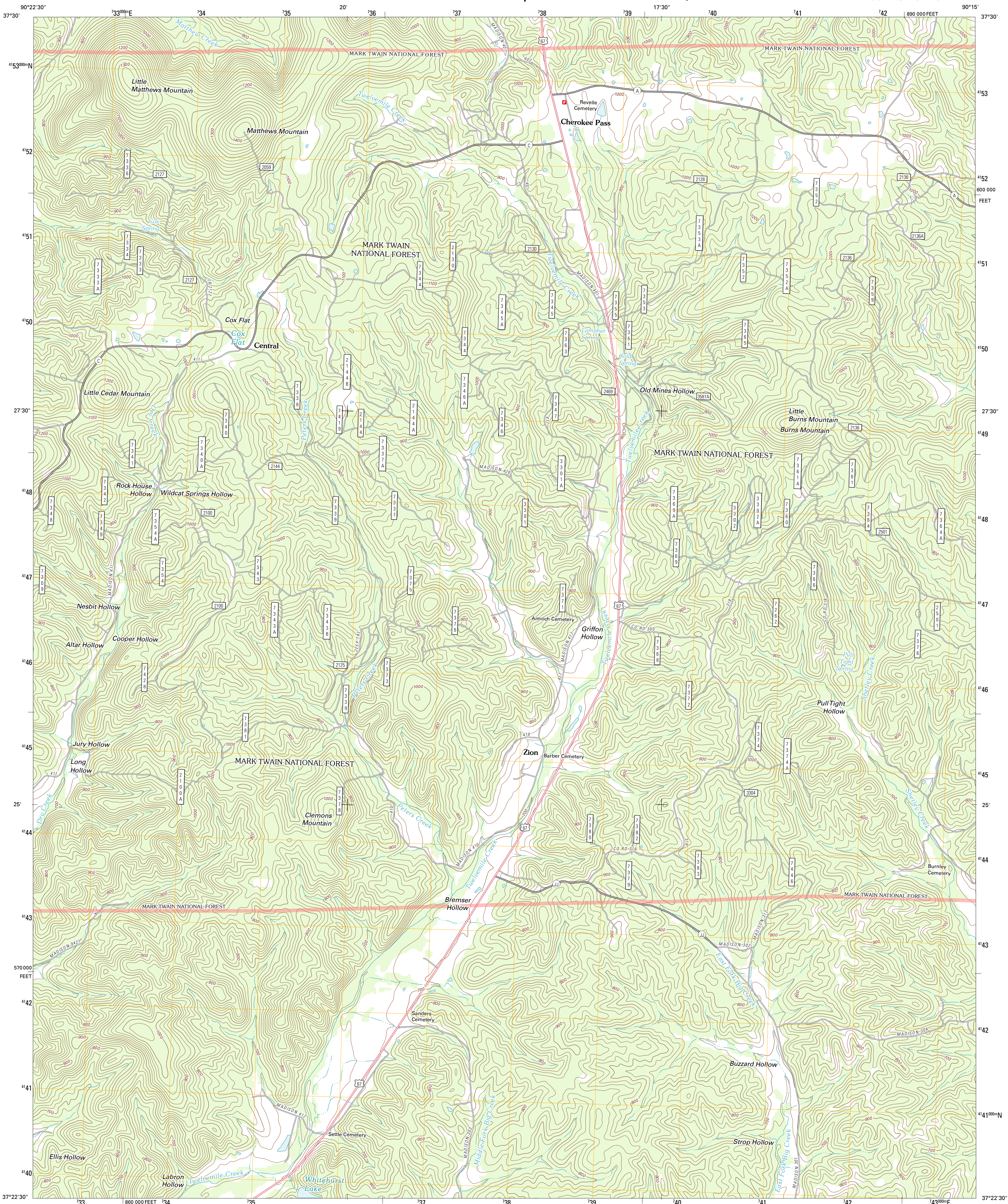




U.S. DEPARTMENT OF THE INTERIOR
U. S. GEOLOGICAL SURVEY



CHEROKEE PASS QUADRANGLE
MISSOURI-MADISON CO.
7.5-MINUTE SERIES

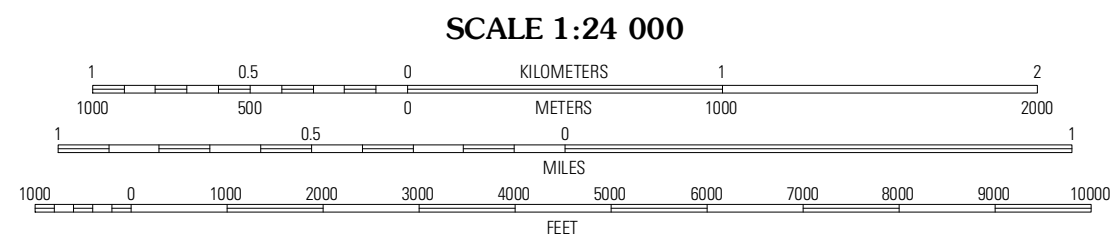


Produced by the United States Geological Survey
North American Datum of 1983 (NAD83)
World Geodetic System of 1984 (WGS84). Projection and
1000-meter grid: Universal Transverse Mercator, Zone 15S
10 000-foot ticks: Missouri Coordinate System of 1983 (east zone)

Imagery.....NAIP, June 2010
Roads.....©2006-2011 TomTom
Roads within US Forest Service Lands.....FS Topo Data
with limited Forest Service updates, 2009
Names.....GNIS, 2011
Hydrography.....National Hydrography Dataset, 2010
Contours.....National Elevation Dataset, 2008
Boundaries.....Census, IBWC, IBC, USGS, 1972 - 2010

UTM GRID AND 2011 MAGNETIC NORTH
DECLINATION AT CENTER OF SHEET

U.S. National Grid
100,000m Square ID
18
Grid Zone Designation
15S



CONTOUR INTERVAL 20 FEET
NORTH AMERICAN VERTICAL DATUM OF 1988
This map was produced to conform with the
National Geospatial Program US Topo Product Standard, 2011.
A metadata file associated with this product is draft version 0.6.1



QUADRANGLE LOCATION		
Rhodes Mountain	Fredericktown	Higdon
Rock Pile Mountain	Cherokee Pass	Marquand
Coldwater	Cascade	Allbright

ROAD CLASSIFICATION

Interstate Route	State Route
US Route	Local Road
Ramp	4WD

Legend:
Interstate Route (thick red line)
US Route (red line)
Ramp (red line with blue triangle)
FS Primary Route (red line with white square)
FS Passenger Route (red line with white circle)
FS High Clearance Route (red line with white circle)
US Route (thin red line)
State Route (thin red line)
Local Road (thin red line)
4WD (dashed red line)

Check with local Forest Service unit
for current travel conditions and restrictions.

CHEROKEE PASS, MO
2011