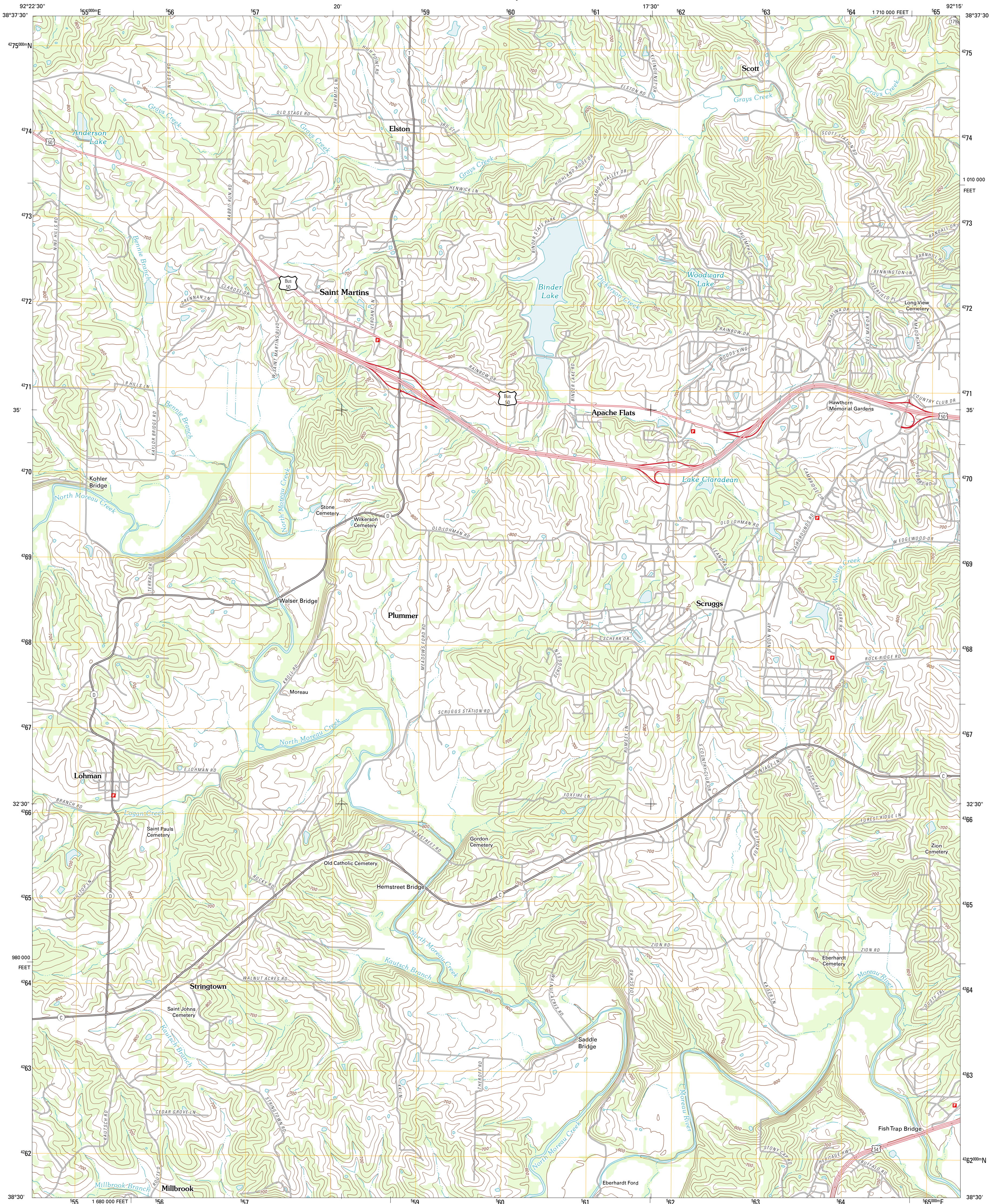




U.S. DEPARTMENT OF THE INTERIOR  
U. S. GEOLOGICAL SURVEY



LOHMAN QUADRANGLE  
MISSOURI-COLE CO.  
7.5-MINUTE SERIES



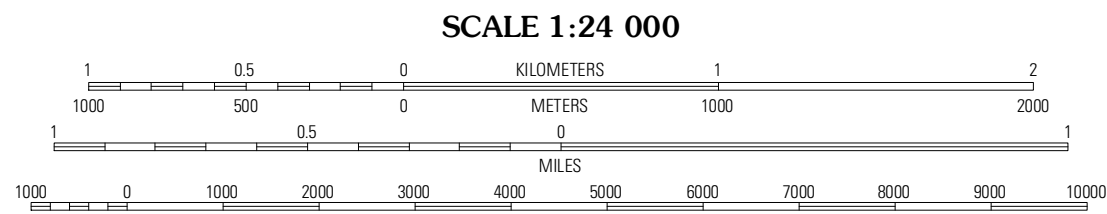
Produced by the United States Geological Survey  
North American Datum of 1983 (NAD83)  
World Geodetic System of 1984 (WGS84). Projection and  
1 000-meter grid: Universal Transverse Mercator, Zone 15S  
10 000-foot ticks: Missouri Coordinate System of 1983  
(central zone)

Imagery.....NAP, June 2010  
Roads.....©2006-2011 TomTom  
Names.....GNIS, 2011  
Hydrography.....National Hydrography Dataset, 2010  
Contours.....National Elevation Dataset, 2005  
Boundaries.....Census, BWC, IBC, USGS, 1972 - 2010

UTM GRID AND 2011 MAGNETIC NORTH  
DECLINATION AT CENTER OF SHEET

0° 41' N  
8 MILS  
12 MILS

U.S. National Grid  
100,000-m Square ID  
WC  
Grid Zone Designation  
15S



CONTOUR INTERVAL 20 FEET  
NORTH AMERICAN VERTICAL DATUM OF 1988

This map was produced to conform with the  
National Geospatial Program US Topo Product Standard, 2011.  
A metadata file associated with this product is draft version 0.6.1



Center town NW	Hartsburg	Jefferson City NW
Russellville	Lohman	Jefferson City
Enon	Bratton	Wardsville

ADJOINING 7.5' QUADRANGLES

ROAD CLASSIFICATION

Interstate Route  
US Route  
Ramp

State Route  
Local Road  
4WD

Interstate Route  
US Route  
State Route

LOHMAN, MO  
2011