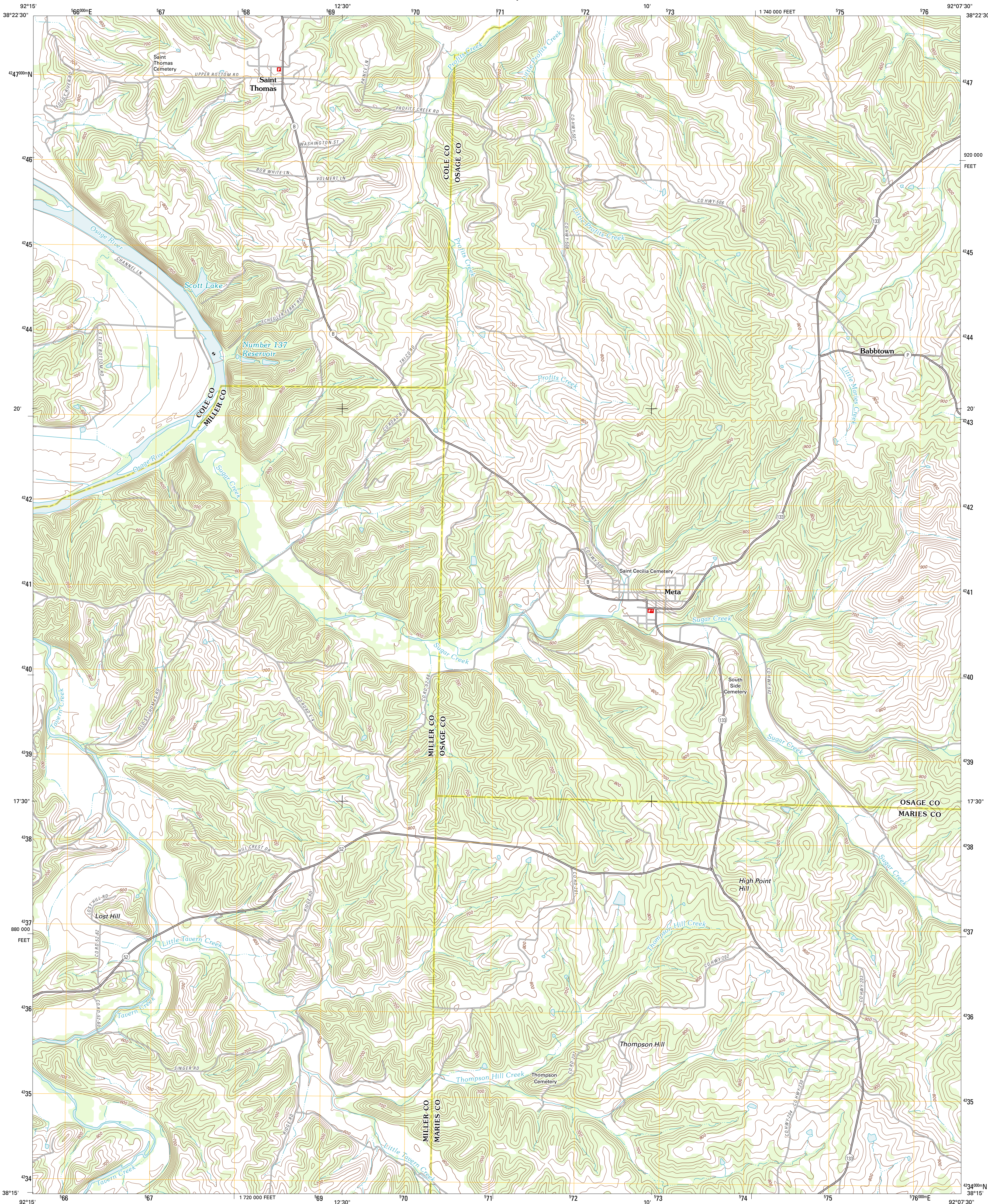




U.S. DEPARTMENT OF THE INTERIOR
U. S. GEOLOGICAL SURVEY



META QUADRANGLE
MISSOURI
7.5-MINUTE SERIES



Produced by the United States Geological Survey
North American Datum of 1983 (NAD83)
World Geodetic System of 1984 (WGS84). Projection and
10 000-foot ticks: Missouri Coordinate System of 1983
(central zone)

Imagery.....NAIP, June 2010
Roads.....©2006-2011 TomTom
Names.....GNIS, 2011
Hydrography.....National Hydrography Dataset, 2010
Contours.....National Elevation Dataset, 2005
Boundaries.....Census, IBWC, IBC, USGS, 1972 - 2010

UTM GRID AND 2011 MAGNETIC NORTH
DECLINATION AT CENTER OF SHEET

U.S. National Grid
100,000-m Square ID
WC
Grid Zone Designation
15S

SCALE 1:24 000
1 000 000 500 0 500 1000 KILOMETERS
1 000 0 500 0 500 1000 METERS
1 000 0 1000 2000 3000 4000 5000 6000 7000 8000 9000 10000 MILES
CONTOUR INTERVAL 20 FEET
NORTH AMERICAN VERTICAL DATUM OF 1988

This map was produced to conform with the
National Geospatial Program US Topo Product Standard, 2011.
A metadata file associated with this product is draft version 0.6.1



Brazito	Wardsville	Westphalia West
Saint Elizabeth	Meta	Angelo
Saint Anthony	Van Cleve	Brinktown

ADJOINING 7.5' QUADRANGLES

ROAD CLASSIFICATION
Interstate Route
US Route
Ramp
State Route
Local Road
4WD

META, MO
2011