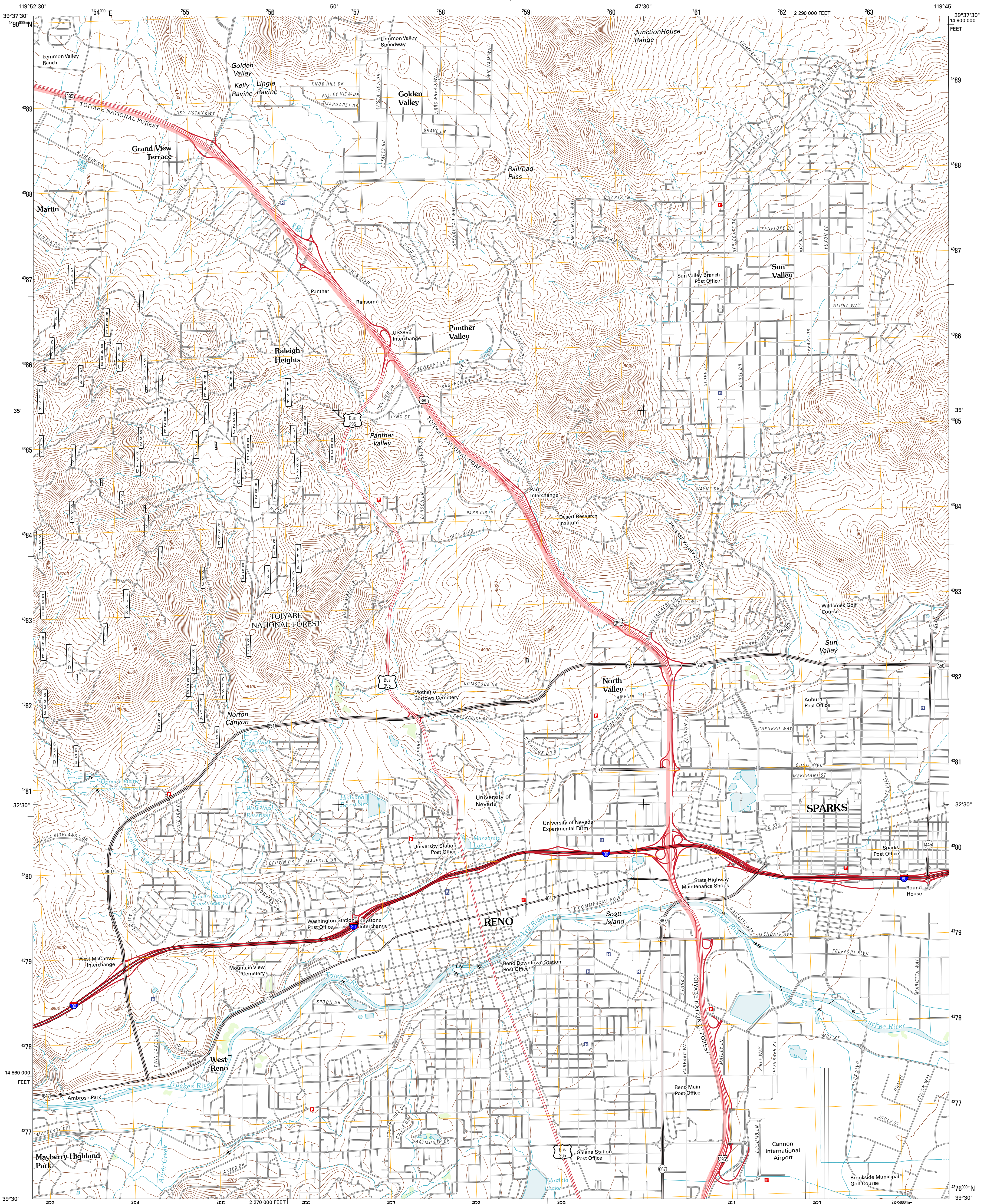




U.S. DEPARTMENT OF THE INTERIOR  
U. S. GEOLOGICAL SURVEY



RENO QUADRANGLE  
NEVADA-WASHOE CO.  
7.5-MINUTE SERIES



Produced by the United States Geological Survey  
North American Datum of 1983 (NAD83)  
World Geodetic System of 1984 (WGS84). Projection and  
1 000-meter grid: Universal Transverse Mercator, Zone 11S  
10 000-foot ticks: Nevada Coordinate System of 1983 (west  
zone)

Imagery.....NAIP, June 2010  
Roads.....02/06-2011 TomTom  
Roads within US Forest Service Lands.....FS/Topo Data  
with limited Forest Service updates, 2009  
Names.....GNIS, 2011  
Hydrography.....National Hydrography Dataset, 2010  
Contours.....National Elevation Dataset, 2011  
Boundaries.....Census, IBWC, IBCS, USGS, 1972 - 2010

UTM GRID AND 2012 MAGNETIC NORTH  
DECLINATION AT CENTER OF SHEET

U.S. National Grid  
100,000-m Square ID  
KD  
Grid Zone Designation  
11S

SCALE 1:24 000

1 0.5 0 0.5 1 2  
1000 500 0 500 1000 2000  
KILOMETERS

1 0.5 0 0.5 1 2  
1000 500 0 500 1000 2000  
METERS

1 0 1000 2000 3000 4000 5000 6000 7000 8000 9000 10000  
MILES

1 0 1000 2000 3000 4000 5000 6000 7000 8000 9000 10000  
FEET

CONTOUR INTERVAL 20 FEET  
NORTH AMERICAN VERTICAL DATUM OF 1988

This map was produced to conform with the  
National Geospatial Program US Topo Product Standard, 2011.  
A metadata file associated with this product is draft version 0.6.1

QUADRANGLE LOCATION		
Reno NW	Reno NE	Griffith Canyon
Verdi	Reno	Vista
Mount Rose NW	Mount Rose NE	Steamboat

ADJOINING 7.5 QUADRANGLES

ROAD CLASSIFICATION

Interstate Route  
US Route  
Ramp

State Route  
Local Road  
4WD

Interstate Route  
US Route  
FS Primary Route  
FS Passenger Route  
FS High Clearance Route

Check with local Forest Service unit  
for current travel conditions and restrictions.

RENO, NV  
2012