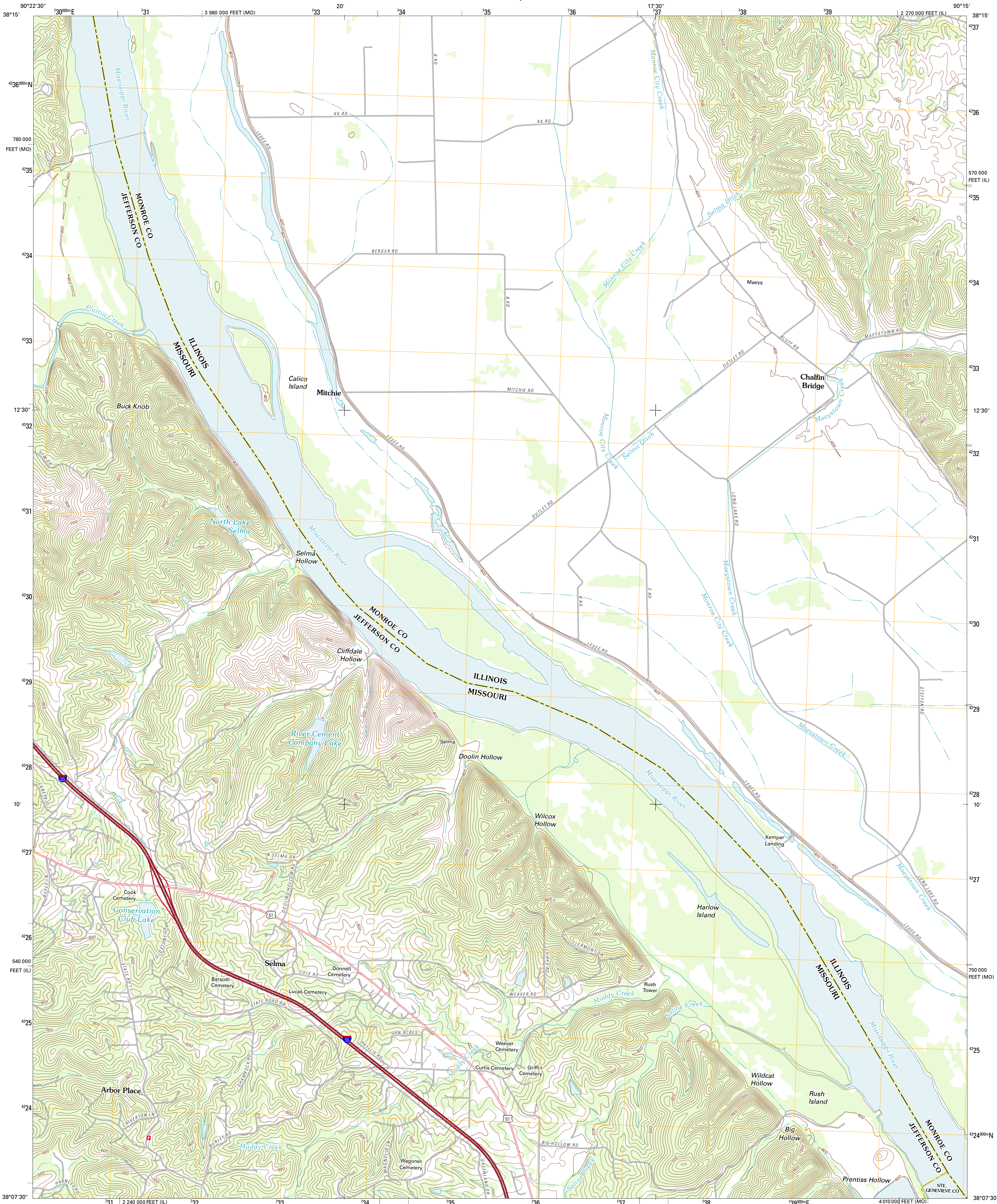




U.S. DEPARTMENT OF THE INTERIOR  
U. S. GEOLOGICAL SURVEY

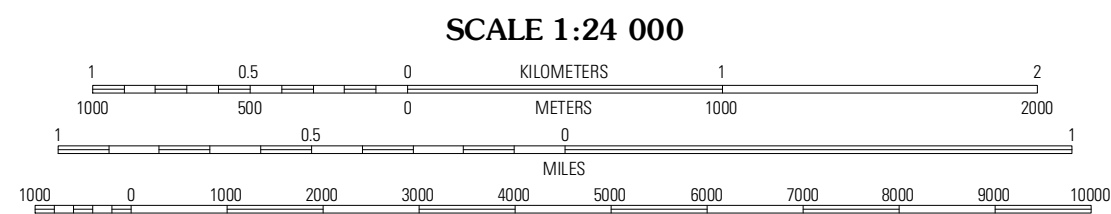
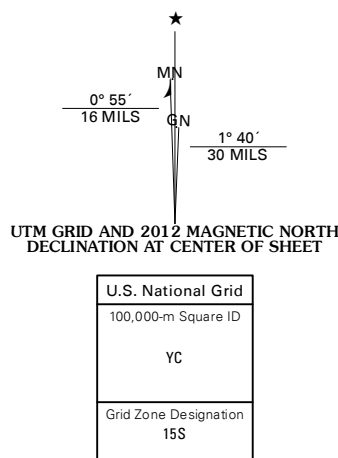


SELMA QUADRANGLE  
MISSOURI-ILLINOIS  
7.5-MINUTE SERIES



Produced by the United States Geological Survey  
North American Datum of 1983 (NAD83)  
World Geodetic System of 1984 (WGS84). Projection and  
1 000-meter grid: Universal Transverse Mercator, Zone 15S  
10 000-foot ticks: Illinois Coordinate System of 1983 (west  
zone), Missouri Coordinate System of 1983 (east zone)

Imagery.....NAP, July 2010  
Roads.....©2006-2011 TomTom  
Names.....GNS, 2011  
Hydrography.....National Hydrography Dataset, 2010  
Contours.....National Elevation Dataset, 2008  
Boundaries.....Census, IBWC, IBC, USGS, 1972-2010

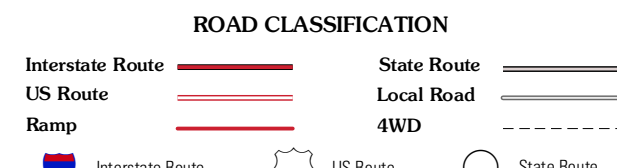


CONTOUR INTERVAL 20 FEET  
NORTH AMERICAN VERTICAL DATUM OF 1988  
This map was produced to conform with the  
National Geospatial Program US Topo Product Standard, 2011.  
A metadata file associated with this product is draft version 0.6.1



Herculesum	Valmeyer	Waterloo
Festus	Selma	Renaud
Halifax	Danby	Bloomdale

ADJOINING 7.5 QUADRANGLES



SELMA, MO-IL  
2012