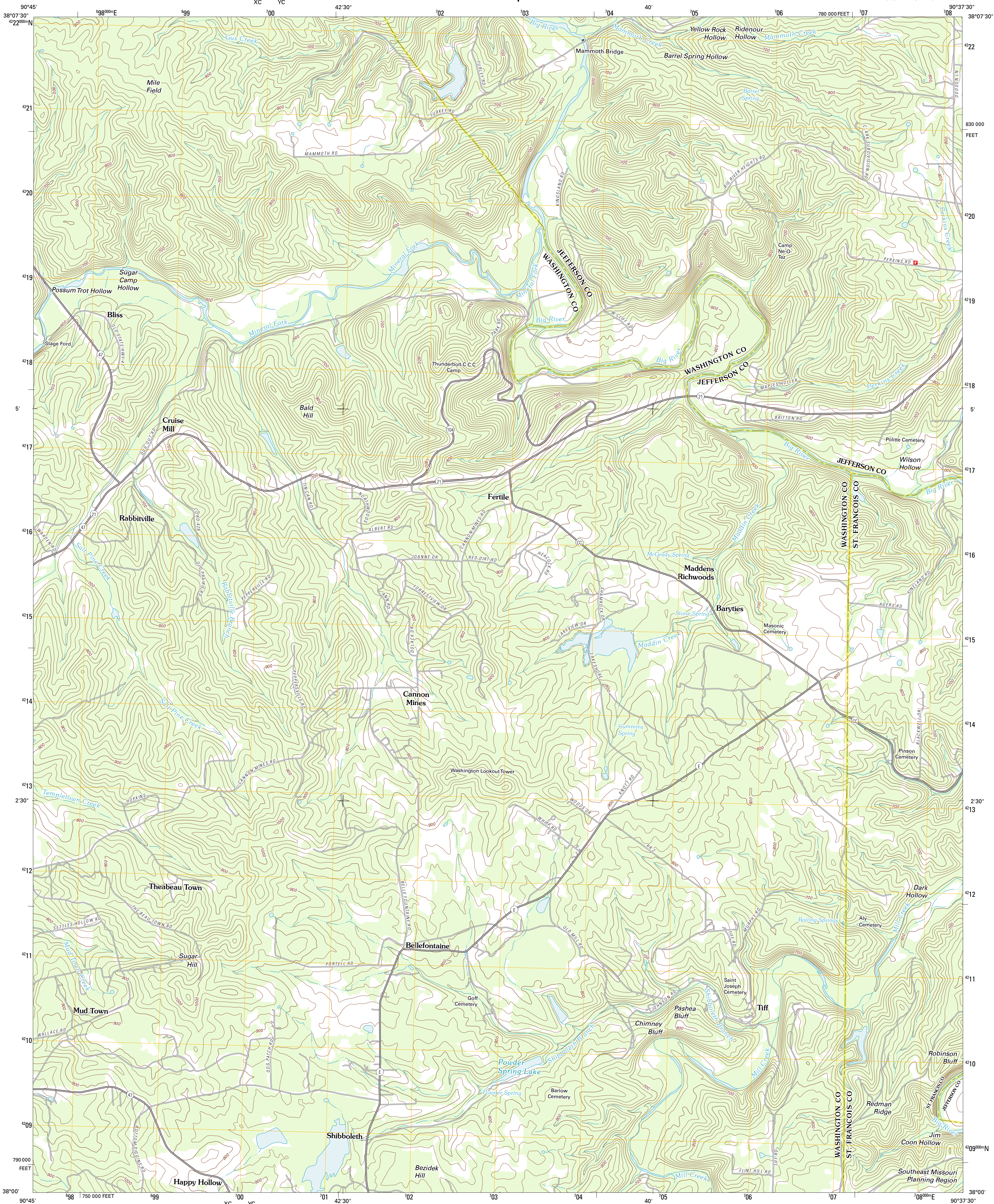




U.S. DEPARTMENT OF THE INTERIOR
U. S. GEOLOGICAL SURVEY

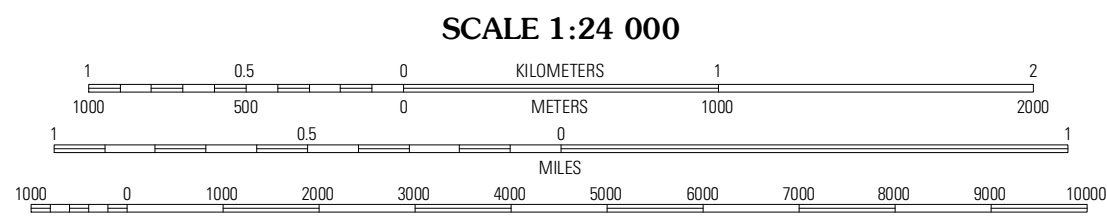
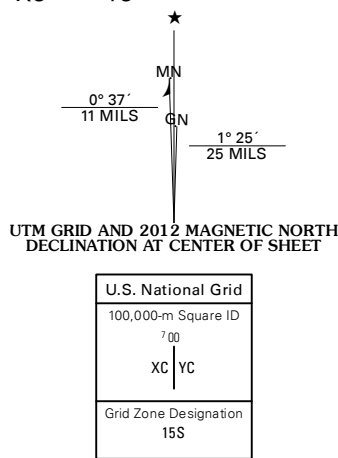


TIFF QUADRANGLE
MISSOURI
7.5-MINUTE SERIES



Produced by the United States Geological Survey
North American Datum of 1983 (NAD83)
World Geodetic System of 1984 (WGS84) Projection and
1 000-meter grid; Universal Transverse Mercator, Zone 15S
10 000-foot ticks; Missouri Coordinate System of 1983 (east zone)

Imagery.....NAP, July 2010
Roads.....©2006-2011 TomTom
Names.....GNIS, 2011
Hydrography.....National Hydrography Dataset, 2010
Contours.....National Elevation Dataset, 2007
Boundaries.....Census, IBWC, IBC, USGS, 1972 - 2010



CONTOUR INTERVAL 20 FEET
NORTH AMERICAN VERTICAL DATUM OF 1988
This map was produced to conform with the
National Geospatial Program US Topo Product Standard, 2011.
A metadata file associated with this product is draft version 0.6.1



QUADRANGLE LOCATION		
Richwoods	Fletcher	De Soto
Old Mines	TIFF	Vineland
Potosi	Mineral Point	Bonne Terre

ADJOINING 7.5 QUADRANGLES

ROAD CLASSIFICATION	
Interstate Route	State Route
US Route	Local Road
Ramp	4WD

TIFF, MO
2012