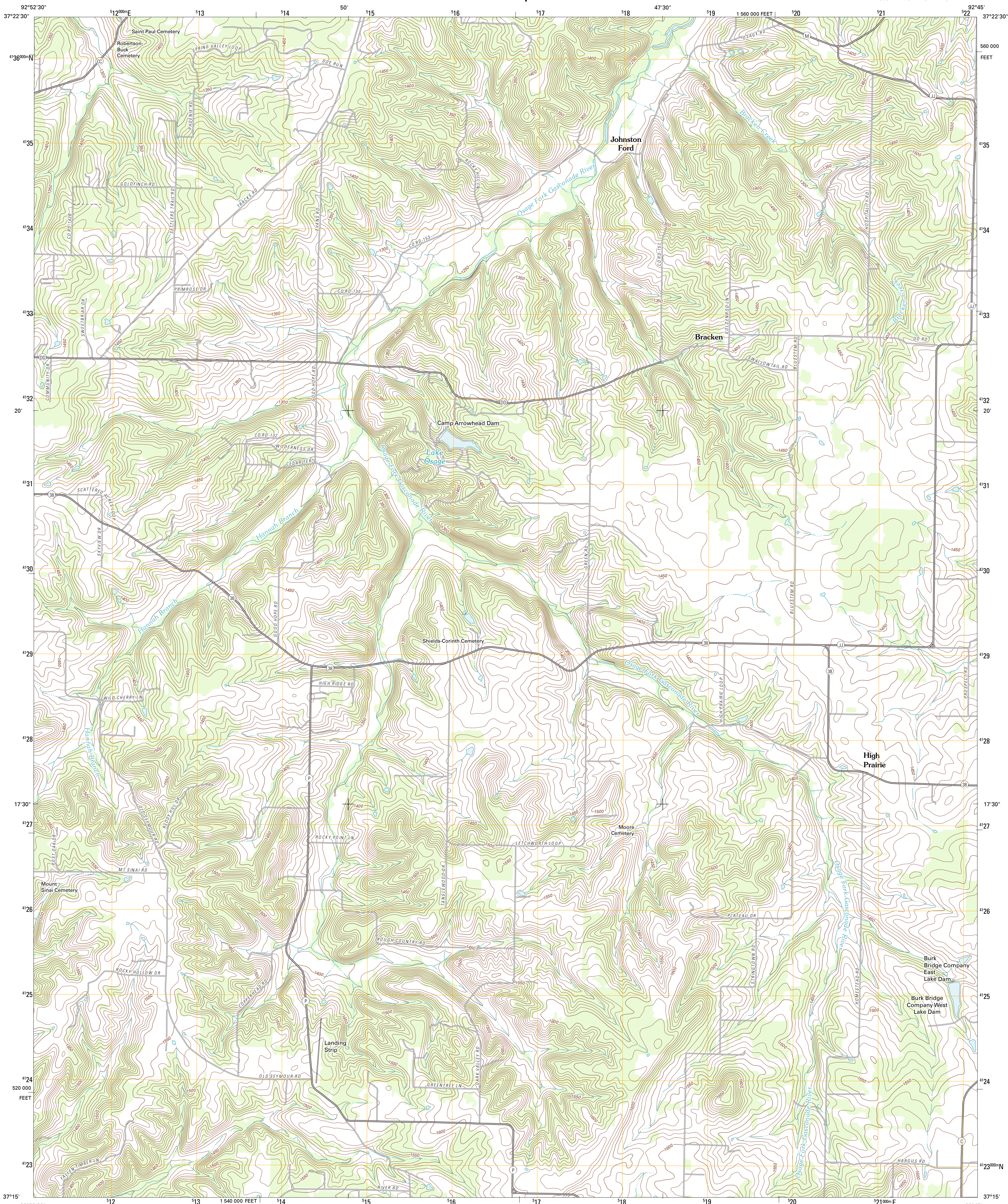




U.S. DEPARTMENT OF THE INTERIOR
U. S. GEOLOGICAL SURVEY



HIGH PRAIRIE QUADRANGLE
MISSOURI-WEBSTER CO.
7.5-MINUTE SERIES



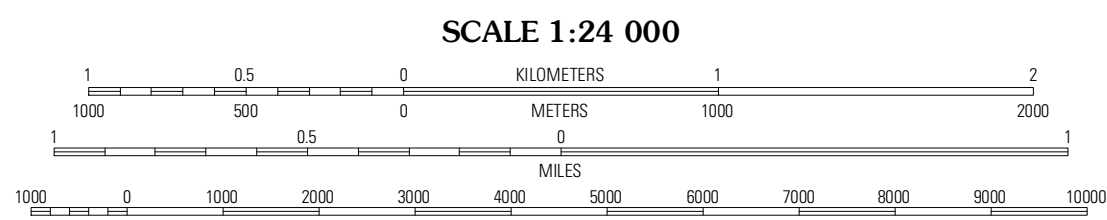
Produced by the United States Geological Survey
North American Datum of 1983 (NAD83)
World Geodetic System of 1984 (WGS84). Projection and
10 000-foot ticks: Missouri Coordinate System of 1983
(central zone)

Imagery.....NAIP, June 2010 - July 2010
Roads.....©2006-2011 TomTom
Names.....GNIS, 2011
Hydrography.....National Hydrography Dataset, 2010
Contours.....National Elevation Dataset, 2005
Boundaries.....Census, IBWC, IBC, USGS, 1972 - 2010

UTM GRID AND 2012 MAGNETIC NORTH
DECLINATION AT CENTER OF SHEET

11° 3'
19 MILS
2 MILS

U.S. National Grid
100,000 m Square ID
WB
Grid Zone Designation
15S



CONTOUR INTERVAL 10 FEET
NORTH AMERICAN VERTICAL DATUM OF 1988

This map was produced to conform with the
National Geospatial Program US Topo Product Standard, 2011.
A metadata file associated with this product is draft version 0.6.1



QUADRANGLE LOCATION

Beach	Niangus	Rader
Marshfield	High Prairie	Duncan
Fordland	Seymour	Manfield NW

ADJOINING 7.5' QUADRANGLES

ROAD CLASSIFICATION

Interstate Route
US Route
Ramp

State Route
Local Road
4WD

HIGH PRAIRIE, MO
2012