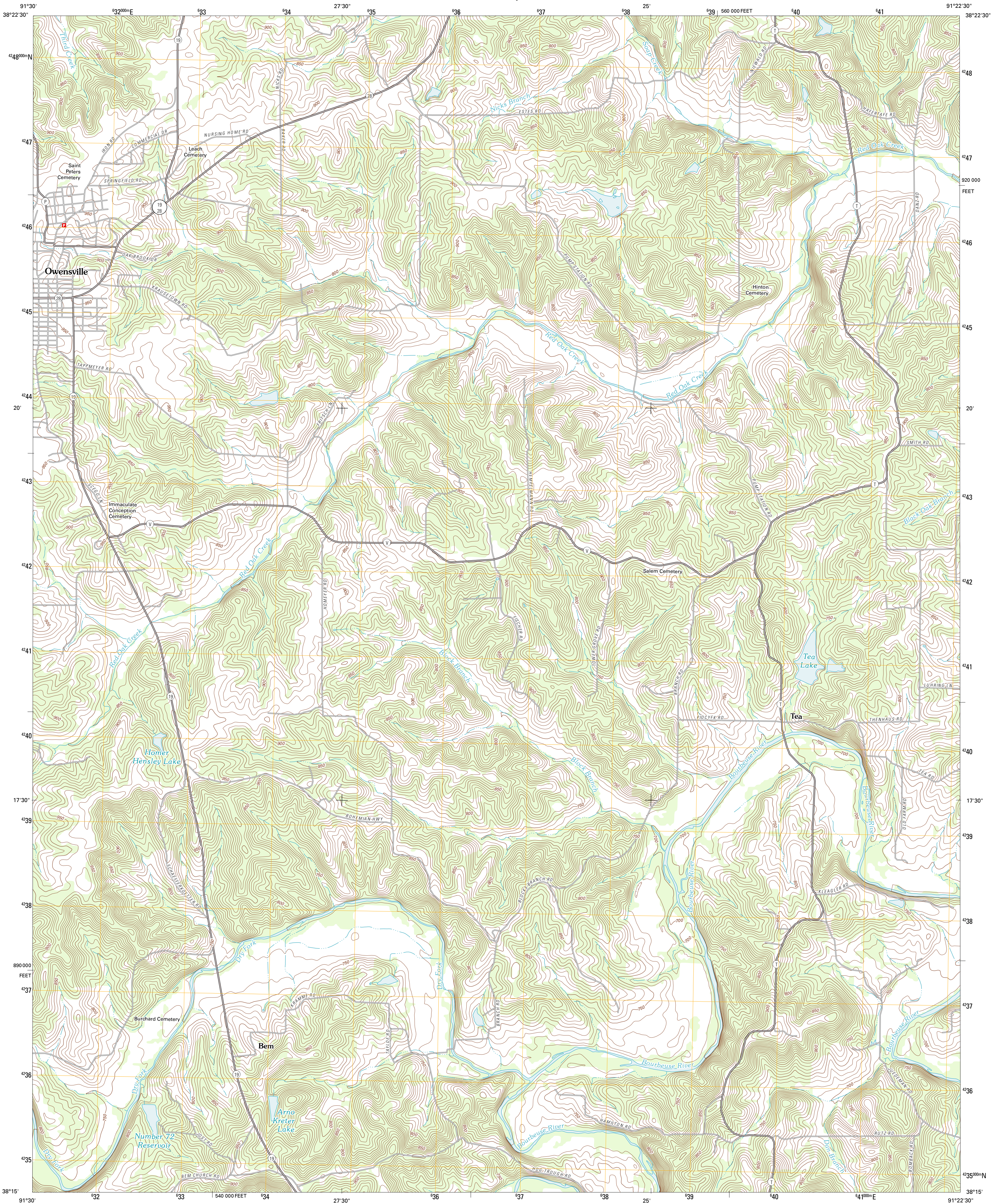




U.S. DEPARTMENT OF THE INTERIOR
U. S. GEOLOGICAL SURVEY



OWENSVILLE EAST QUADRANGLE
MISSOURI-GASCONADE CO.
7.5-MINUTE SERIES



Produced by the United States Geological Survey
North American Datum of 1983 (NAD83)
World Geodetic System of 1984 (WGS84): Projection and
1 000-meter grid: Universal Transverse Mercator, Zone 15S
10 000-foot ticks: Missouri Coordinate System of 1983 (east
zone)

Imagery.....NAIP, June 2010
Roads.....©2006-2011 TomTom
Names.....GNIS, 2011
Hydrography.....National Hydrography Dataset, 2010
Contours.....National Elevation Dataset, 2005
Boundaries.....Census, IBWC, IBC, USGS, 1972 - 2010

UTM GRID AND 2012 MAGNETIC NORTH
DECLINATION AT CENTER OF SHEET

U.S. National Grid
100,000-m Square ID
XC
Grid Zone Designation
15S

SCALE 1:24 000
1 000 0 500 0 1000 2000
KILOMETERS
1 000 0 1000 2000 3000 4000 5000 6000 7000 8000 9000 10000
METERS
1 000 0 1000 2000 3000 4000 5000 6000 7000 8000 9000 10000
MILES
CONTOUR INTERVAL 10 FEET
NORTH AMERICAN VERTICAL DATUM OF 1988

This map was produced to conform with the
National Geospatial Program US Topo Product Standard, 2011.
A metadata file associated with this product is draft version 0.6.1



Georlich Ridge	Rosebud	Gerald
Owensville West	Owensville East	Strain
Redbird	Oak Hill	Ange

ADJOINING 7.5' QUADRANGLES

ROAD CLASSIFICATION
Interstate Route
US Route
Ramp
State Route
Local Road
4WD
Interstate Route
US Route
State Route

OWENSVILLE EAST, MO
2012