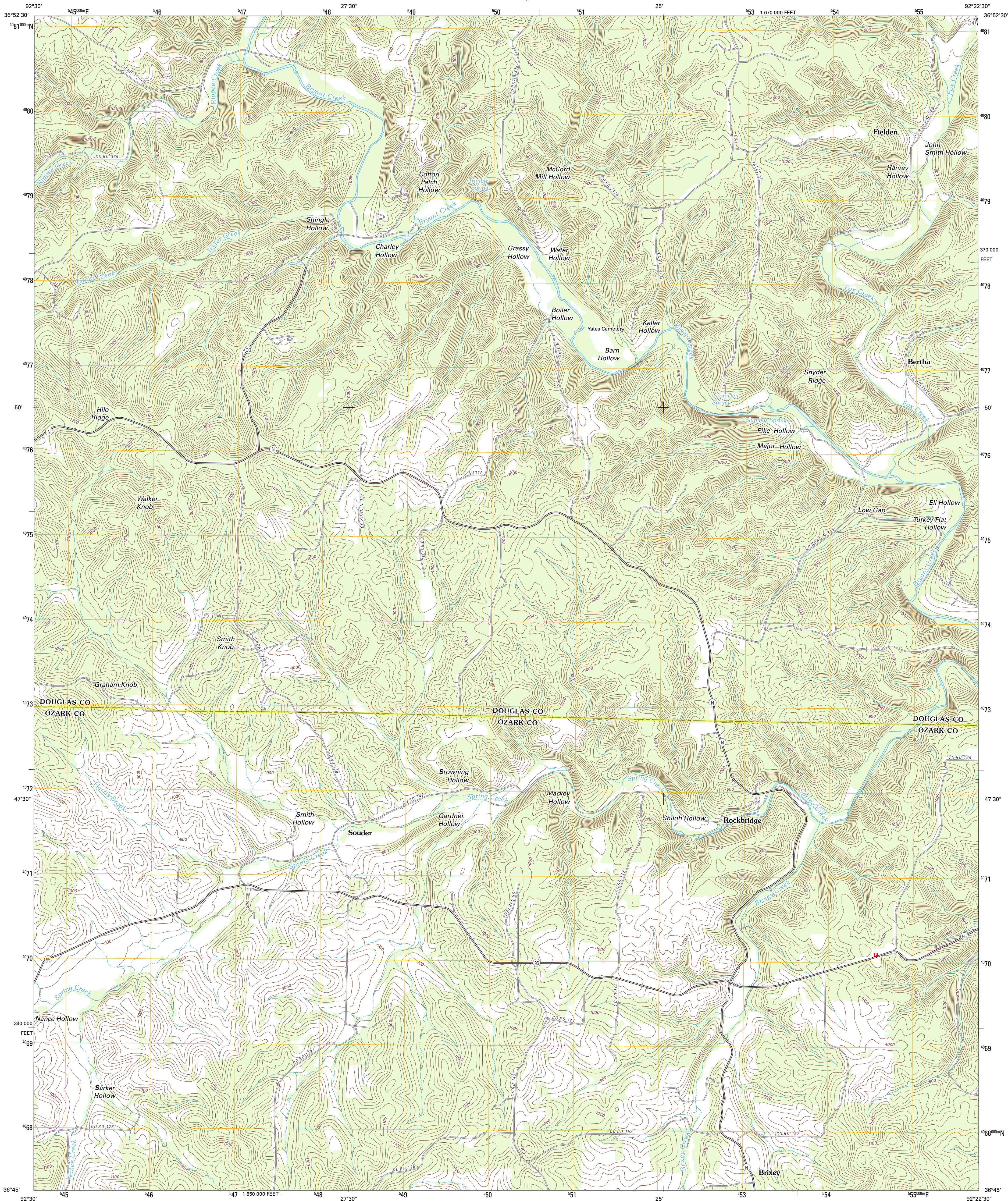




U.S. DEPARTMENT OF THE INTERIOR  
U. S. GEOLOGICAL SURVEY



ROCKBRIDGE QUADRANGLE  
MISSOURI  
7.5-MINUTE SERIES



Produced by the United States Geological Survey  
North American Datum of 1983 (NAD83)  
World Geodetic System of 1984 (WGS84). Projection and  
1 000-meter grid: Universal Transverse Mercator, Zone 15S  
10 000-foot ticks: Missouri Coordinate System of 1983  
(central zone)

Imagery.....NAP, June 2010  
Roads.....©2006-2011 TomTom  
Names.....GNIS, 2011  
Hydrography.....National Hydrography Dataset, 2010  
Contours.....National Elevation Dataset, 2005  
Boundaries.....Census, BWC, BIC, USGS, 1972 - 2010

UTM GRID AND 2012 MAGNETIC NORTH  
DECLINATION AT CENTER OF SHEET

|                       |
|-----------------------|
| U.S. National Grid    |
| 100,000-m Square ID   |
| WA                    |
| Grid Zone Designation |
| 15S                   |

SCALE 1:24 000

1 000 500 0 500 1000 2000  
KILOMETERS  
1 000 500 0 500 1000 2000  
METERS  
1 000 2000 3000 4000 5000 6000 7000 8000 9000 10000  
FEET

CONTOUR INTERVAL 20 FEET  
NORTH AMERICAN VERTICAL DATUM OF 1988

This map was produced to conform with the  
National Geospatial Program US Topo Product Standard, 2011.  
A metadata file associated with this product is draft version 0.6.1



|                     |               |             |
|---------------------|---------------|-------------|
| QUADRANGLE LOCATION |               |             |
| Sueden              | Brushyknob    | Vanzant     |
| Wasola              | Rockbridge    | Gentryville |
| Willhoit            | Gainewille NW | Sycamore    |

ROAD CLASSIFICATION

|                  |             |
|------------------|-------------|
| Interstate Route | State Route |
| US Route         | Local Road  |
| Ramp             | 4WD         |
| Interstate Route | US Route    |
|                  | State Route |

ROCKBRIDGE, MO  
2012