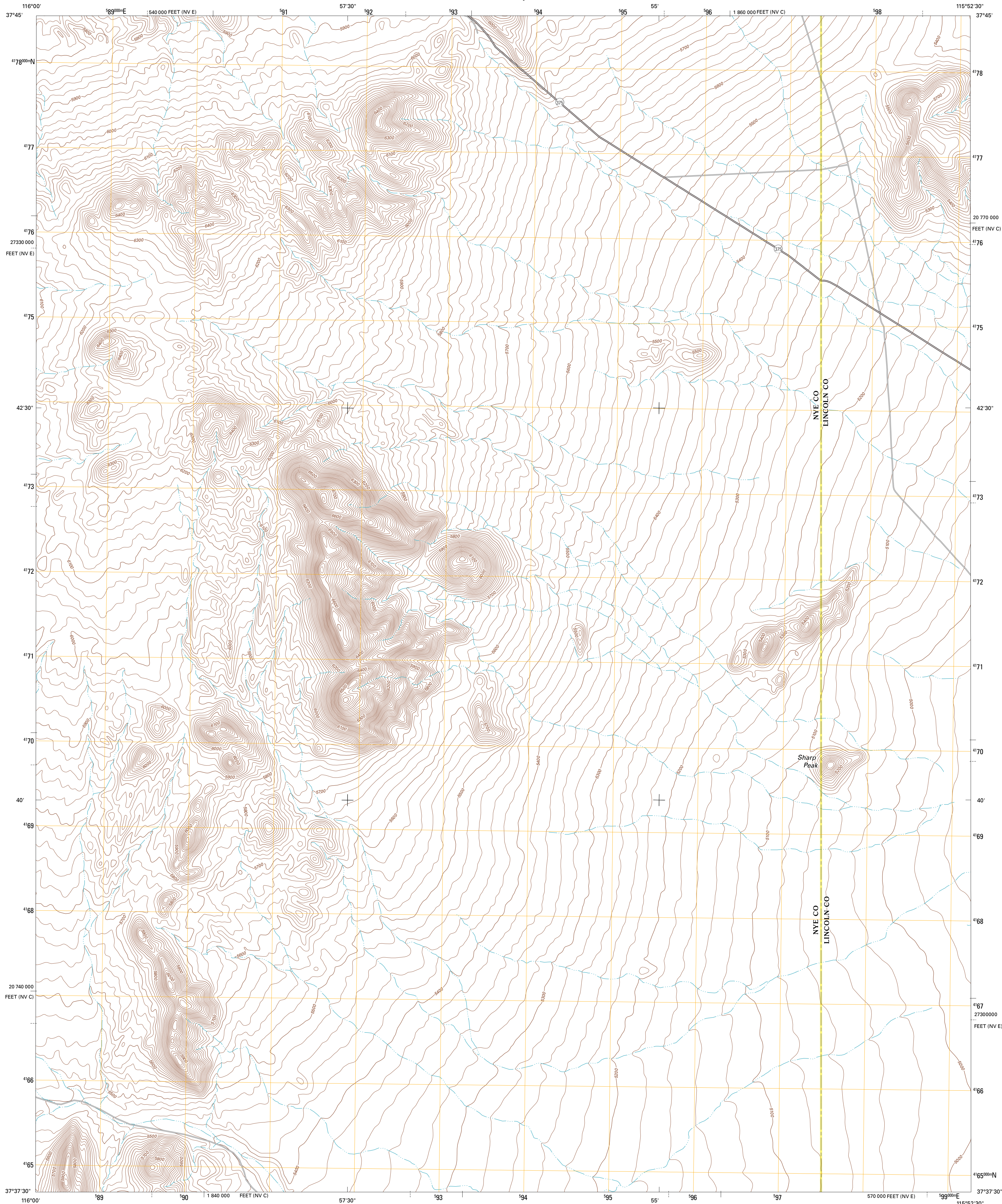




U.S. DEPARTMENT OF THE INTERIOR  
U. S. GEOLOGICAL SURVEY

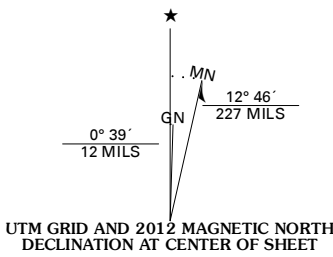


WHITE BLOTCH SPRINGS NW QUADRANGLE  
NEVADA  
7.5-MINUTE SERIES

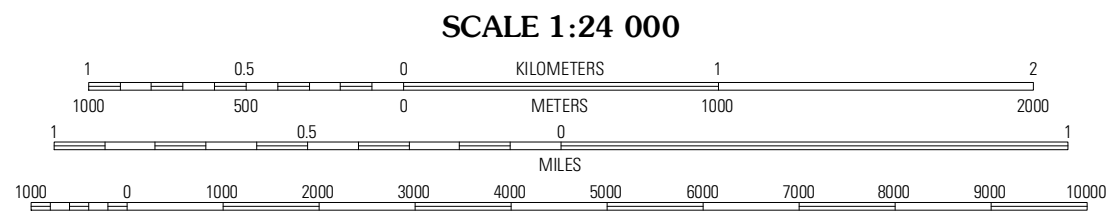


Produced by the United States Geological Survey  
North American Datum of 1983 (NAD83)  
World Geodetic System of 1984 (WGS84). Projection and  
1 000-meter grid: Universal Transverse Mercator, Zone 11S  
10 000-foot ticks: Nevada Coordinate System of 1983  
(central and east zones)

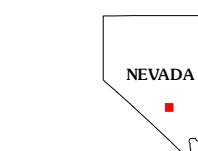
Imagery.....NAIP, July 2010  
Roads.....©2006-2011 TomTom  
Names.....GNIS, 2011  
Hydrography.....National Hydrography Dataset, 2010  
Contours.....National Elevation Dataset, 2004  
Boundaries.....Census, IBWC, IBC, USGS, 1972 - 2010



|                       |
|-----------------------|
| U.S. National Grid    |
| 100,000-m Square ID   |
| NB                    |
| Grid Zone Designation |
| 11S                   |



CONTOUR INTERVAL 20 FEET  
NORTH AMERICAN VERTICAL DATUM OF 1988  
This map was produced to conform with the  
National Geospatial Program US Topo Product Standard, 2011.  
A metadata file associated with this product is draft version 0.6.1



| QUADRANGLE LOCATION |                         |                         |
|---------------------|-------------------------|-------------------------|
| Revelle Peak SE     | Black Top               | Honest John Well        |
| Monotony Valley     | White Blotch Springs NW | White Blotch Springs NE |
| Belted Peak         | White Blotch Springs    | White Blotch Springs SE |

| ROAD CLASSIFICATION |             |            |
|---------------------|-------------|------------|
| Interstate Route    | State Route | Local Road |
| US Route            | 4WD         |            |
| Ramp                |             |            |

WHITE BLOTCH SPRINGS NW, NV  
2012