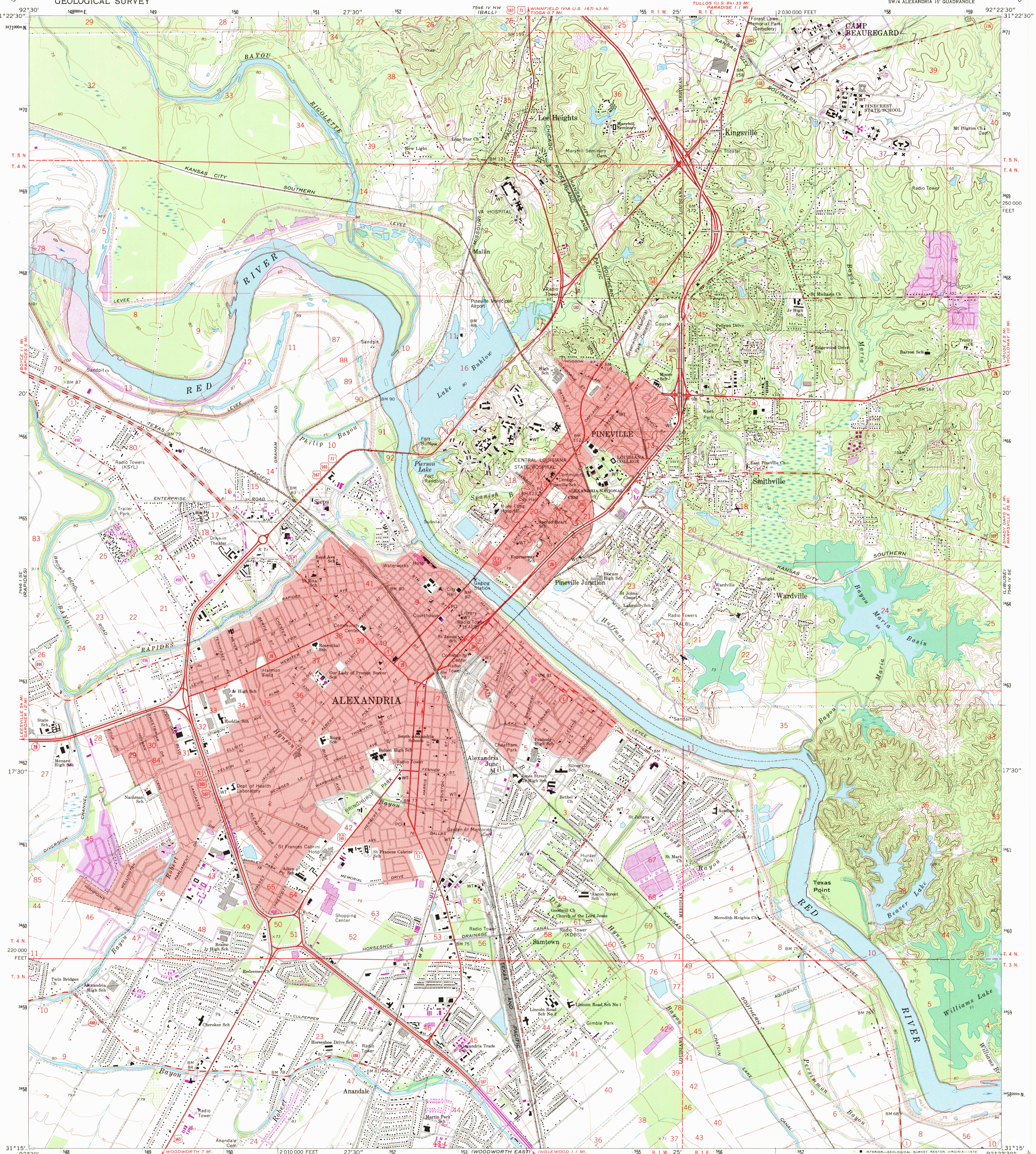
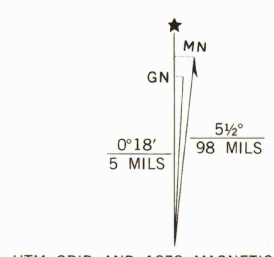


UNITED STATES
DEPARTMENT OF THE INTERIOR
GEOLOGICAL SURVEY

ALEXANDRIA QUADRANGLE
LOUISIANA—RAPIDES PARISH
7.5 MINUTE SERIES (TOPOGRAPHIC)
SW/4 ALEXANDRIA 15' QUADRANGLE

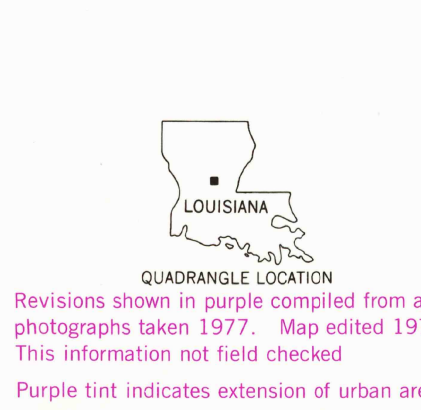


Mapped, edited, and published by the Geological Survey
Control by USGS, USC&GS, and Louisiana Geodetic Survey
Topography by photogrammetric methods from aerial photographs
taken 1955 and planetable surveys 1957. Revised from aerial
photographs taken 1971. Field checked 1972
Polyconic projection. 1927 North American datum
10,000-foot grid based on Louisiana coordinate system, north zone
To place on the predicted North American Datum 1983
move the projection lines 15 meters south and
13 meters east as shown by dashed corner ticks
1000-meter Universal Transverse Mercator grid ticks,
zone 15, shown in blue
There may be private inholdings within the boundaries of
the National or State reservations shown on this map
Red tint indicates areas in which only landmark buildings are shown



SCALE 1:24,000
CONTOUR INTERVAL 10 FEET
DOTTED LINES REPRESENT 5-FOOT CONTOURS
NATIONAL GEODETIC VERTICAL DATUM OF 1929

THIS MAP COMPLIES WITH NATIONAL MAP ACCURACY STANDARDS
FOR SALE BY U. S. GEOLOGICAL SURVEY, DENVER, COLORADO 80225, OR RESTON, VIRGINIA 22092
AND STATE OF LOUISIANA, DEPARTMENT OF PUBLIC WORKS, BATON ROUGE, LOUISIANA 70804
A FOLDER DESCRIBING TOPOGRAPHIC MAPS AND SYMBOLS IS AVAILABLE ON REQUEST



ROAD CLASSIFICATION
Primary highway, hard surface
Secondary highway, hard surface
Unimproved road
Interstate Route
U. S. Route
State Route
Light-duty road, hard or improved surface
Unimproved road
ALEXANDRIA, LA.
SW/4 ALEXANDRIA 15' QUADRANGLE
N3115—W9222.5/7.5
1972
PHOTO REVISITED 1979
DMA 7546 IV SW—SERIES V885

