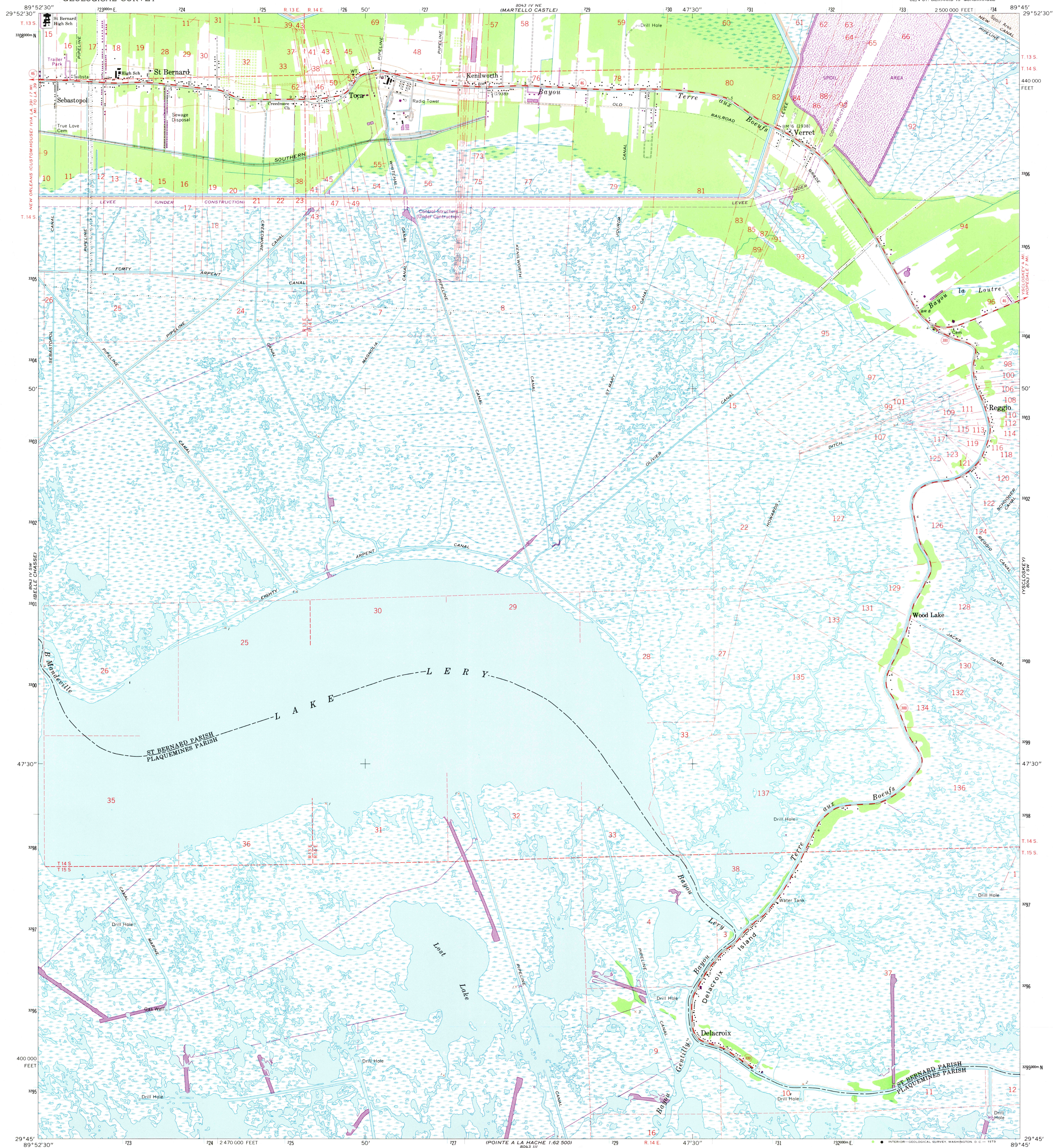
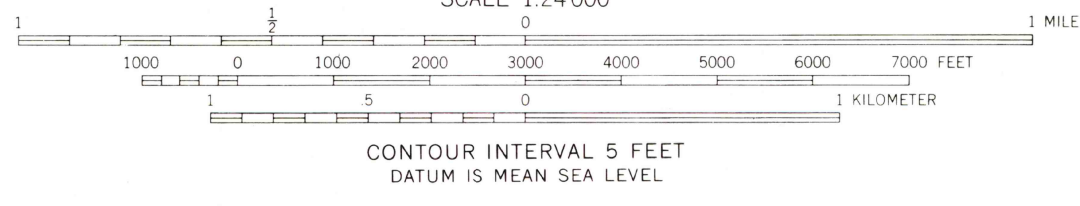
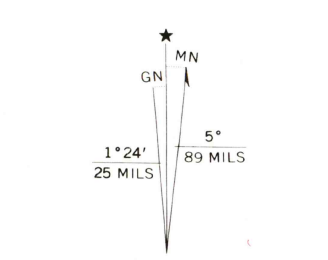


UNITED STATES
DEPARTMENT OF THE INTERIOR
GEOLOGICAL SURVEY

DELA CROIX QUADRANGLE
LOUISIANA
7.5 MINUTE SERIES (TOPOGRAPHIC)
SE/4 ST. BERNARD 15' QUADRANGLE



Mapped, edited, and published by the Geological Survey
Control by USGS, USC&GS, and Louisiana Geodetic Survey
Planimetry by photogrammetric methods from aerial photographs
taken 1965. Topography by planimetric surveys 1967
Supersedes map dated 1938-51
Polyconic projection, 1927 North American datum
10,000-foot grid based on Louisiana coordinate system, south zone
1000-meter Universal Transverse Mercator grid ticks,
zone 16, shown in blue
Where omitted, land lines have not been established
or are not shown because of insufficient data
All or part of this quadrangle lies within a subsidence area
Bench marks have been adjusted to 1964 leveling unless otherwise
indicated by parenthetical dates



THIS MAP COMPLIES WITH NATIONAL MAP ACCURACY STANDARDS
FOR SALE BY U.S. GEOLOGICAL SURVEY, DENVER, COLORADO 80225, OR WASHINGTON, D.C. 20242
AND BY THE STATE OF LOUISIANA, DEPARTMENT OF PUBLIC WORKS, BATON ROUGE, LOUISIANA 70804
A FOLDER DESCRIBING TOPOGRAPHIC MAPS AND SYMBOLS IS AVAILABLE ON REQUEST



ROAD CLASSIFICATION
Medium-duty ——— Light-duty ———
Unimproved dirt ——— State Route ———
USGS
Historical File
Topographic Division
NOV 13 1973

DELA CROIX, LA.
SE/4 ST. BERNARD 15' QUADRANGLE
N2945-W8945/7.5
1967
PHOTOREVISED 1972
AMS 8043 IV SE-SERIES V885