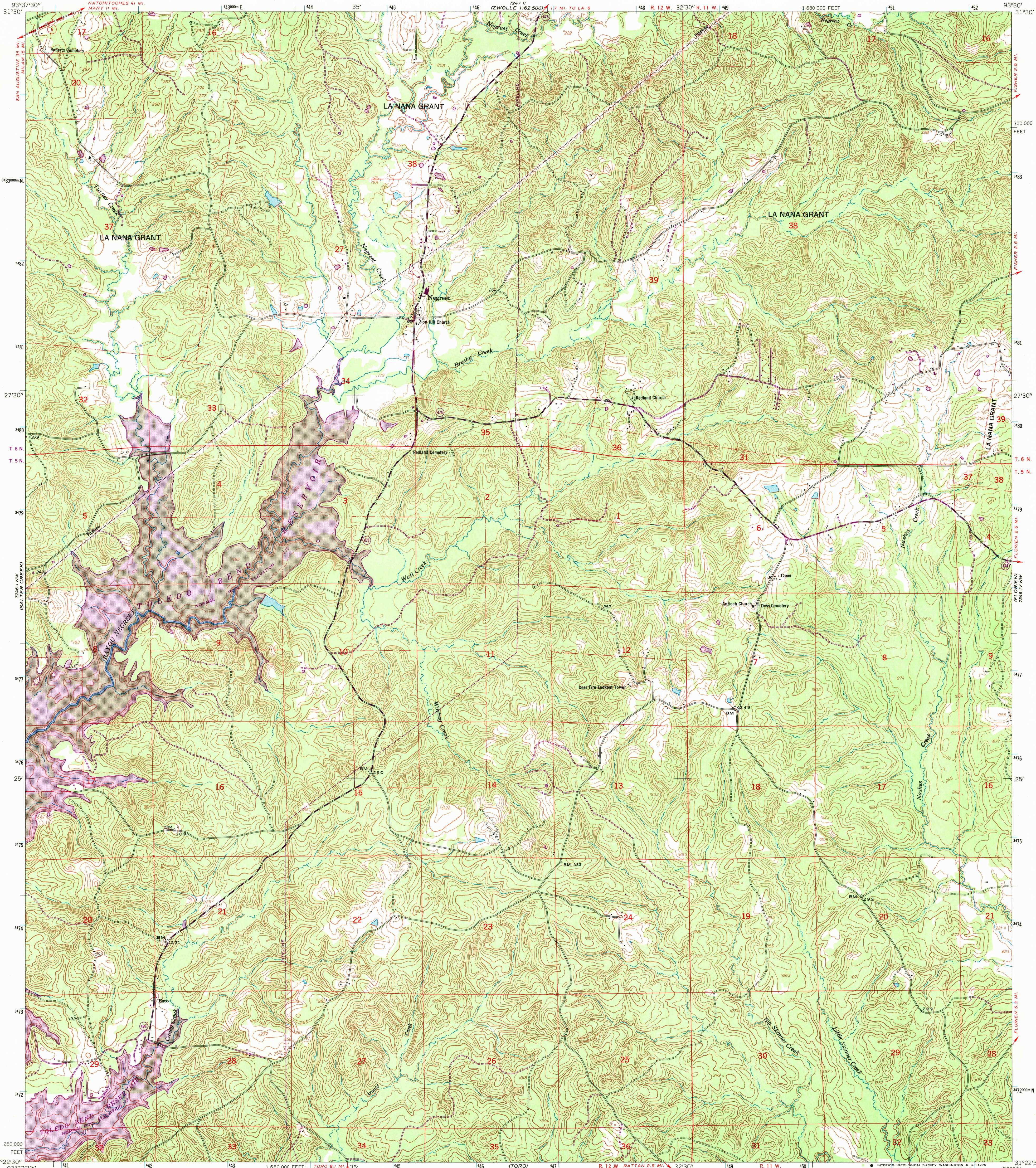


UNITED STATES
DEPARTMENT OF THE INTERIOR
GEOLOGICAL SURVEY

UNITED STATES
DEPARTMENT OF THE ARMY
CORPS OF ENGINEERS

NEGREET QUADRANGLE
LOUISIANA—SABINE PARISH
7.5 MINUTE SERIES (TOPOGRAPHIC)
NE/4 NEGREET 15' QUADRANGLE

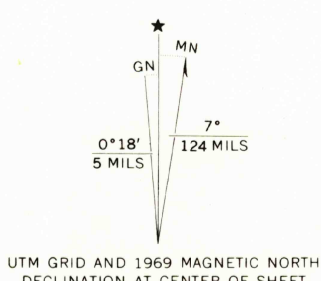


Maped by the Army Map Service
Published for civil use by the Geological Survey
Control by USGS, USC&GS, USCE, and Louisiana Geodetic Survey
Topography from aerial photographs by photogrammetric methods
Aerial photographs taken 1953-1954. Field check 1954

Polyconic projection. 1927 North American datum
10,000-foot grid based on Louisiana coordinate system, north zone
1000-meter Universal Transverse Mercator grid ticks,
zone 15, shown in blue

Revisions shown in purple compiled by the Geological Survey from
aerial photographs taken 1969. This information not field checked

Woodland revised within Toledo Bend Reservoir



SCALE 1:24,000
CONTOUR INTERVAL 10 FEET
DASHED LINES REPRESENT 5-FOOT CONTOURS
DATUM IS MEAN SEA LEVEL

THIS MAP COMPLIES WITH NATIONAL MAP ACCURACY STANDARDS
FOR SALE BY U.S. GEOLOGICAL SURVEY, DENVER, COLORADO 80225, OR WASHINGTON, D. C. 20242
AND BY THE STATE OF LOUISIANA, DEPARTMENT OF PUBLIC WORKS, BATON ROUGE, LOUISIANA 70804
A FOLDER DESCRIBING TOPOGRAPHIC MAPS AND SYMBOLS IS AVAILABLE ON REQUEST



USGS
Historical File
Topographic Division

ROAD CLASSIFICATION
Medium-duty ——— Light-duty ———
Unimproved drt - - - - -
State Route

NEGREET, LA.
NE/4 NEGREET 15' QUADRANGLE
N 3122.5—W 9330/7.5

1954
PHOTOREVISED 1969

AMS 7246 I NE-SERIES V885

MAR 20 1970