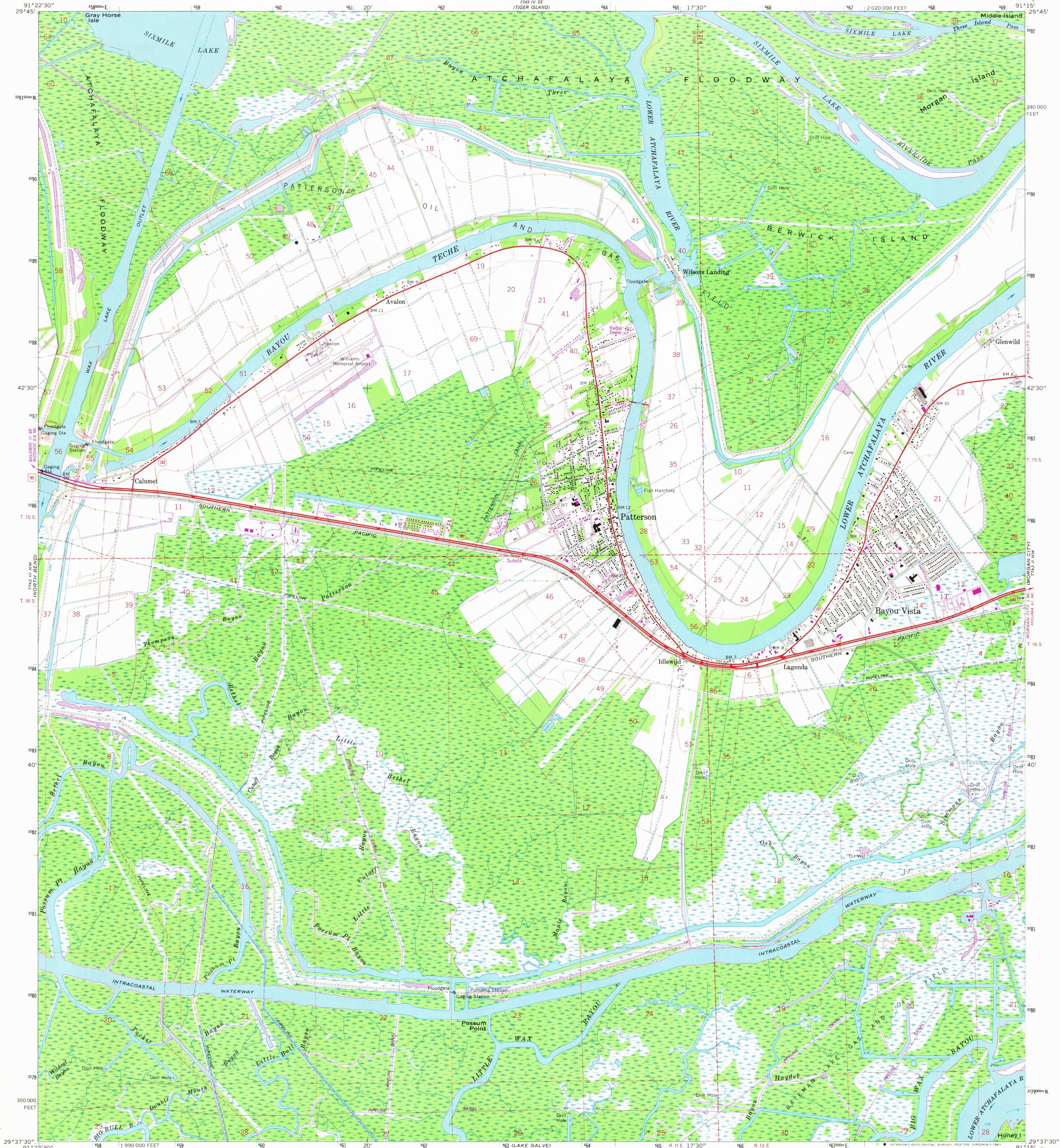


UNITED STATES
DEPARTMENT OF THE INTERIOR
GEOLOGICAL SURVEY

PATTERSON QUADRANGLE
LOUISIANA—ST. MARY PARISH
7.5 MINUTE SERIES (TOPOGRAPHIC)
NE/4 BELLE ISLE 15' QUADRANGLE



Mapped, edited, and published by the Geological Survey

Control by USGS and USC&GS

Planimetry by photogrammetric methods from aerial photographs taken 1964. Topography by planetable surveys 1966

Selected hydrographic data compiled from USC&GS Charts 880 (1966) and 1276 (1965). This information is not intended for navigational purposes

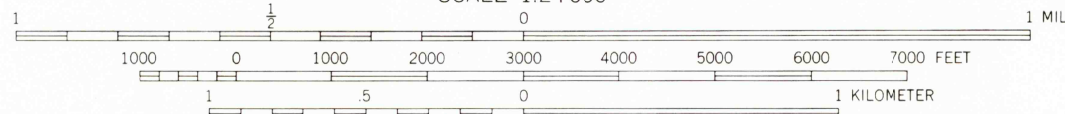
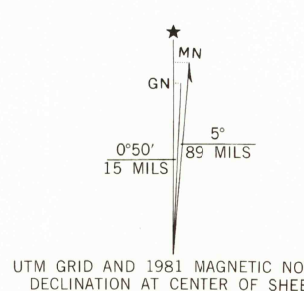
Polycyclic projection. 1927 North American datum 10,000-foot grid based on Louisiana coordinate system, south zone 1000-meter Universal Transverse Mercator grid ticks, zone 15, shown in blue

All or part of this quadrangle lies within a subsidence area

Dotted land lines established by private survey

To place on the predicted North American Datum 1983

move the projection lines 19 meters south and 11 meters east as shown by dashed corner ticks



CONTOUR INTERVAL 5 FEET
NATIONAL GEODETIC VERTICAL DATUM OF 1929
DEPTH CURVES AND SOUNDINGS IN FEET—GULF COAST LOW WATER DATUM
THE RELATIONSHIP BETWEEN THE TWO DATUMS IS VARIABLE
SHORELINE SHOWN REPRESENTS THE APPROXIMATE LINE OF MEAN HIGH WATER
THE MEAN RANGE OF TIDE IS APPROXIMATELY 1/4 FOOT

THIS MAP COMPLIES WITH NATIONAL MAP ACCURACY STANDARDS
FOR SALE BY U. S. GEOLOGICAL SURVEY, DENVER, COLORADO 80225, OR RESTON, VIRGINIA 22092
AND STATE OF LOUISIANA, DEPARTMENT OF PUBLIC WORKS, BATON ROUGE, LOUISIANA 70804
A FOLDER DESCRIBING TOPOGRAPHIC MAPS AND SYMBOLS IS AVAILABLE ON REQUEST



Revisions shown in purple and woodland compiled from aerial photographs taken 1978. Map edited 1981
This information not field checked

ROAD CLASSIFICATION	
Heavy-duty	Light-duty
Medium-duty	Unimproved dirt
U.S. Route	State Route

USGS
NATIONAL HISTORICAL FILE

PATTERSON, LA.
NE/4 BELLE ISLE 15' QUADRANGLE
N2937.5—W9115.7/5

1966
PHOTOREVISED 1981
DMA 7743 III NE—SERIES V885

MAY 28 1981