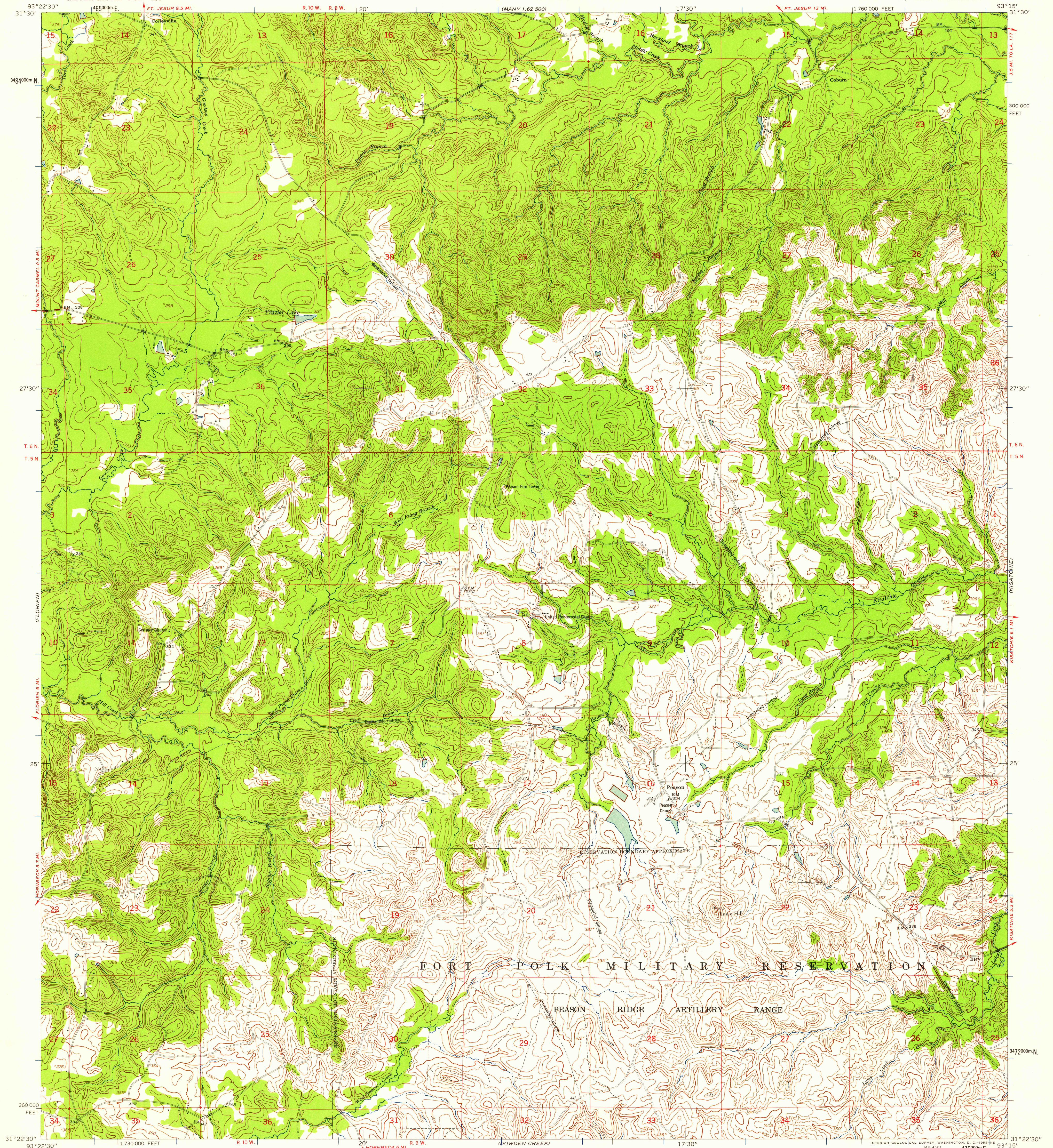


UNITED STATES  
DEPARTMENT OF THE INTERIOR  
GEOLOGICAL SURVEY

UNITED STATES  
DEPARTMENT OF THE ARMY  
CORPS OF ENGINEERS

PEASON QUADRANGLE  
LOUISIANA—SABINE PARISH  
7.5 MINUTE SERIES (TOPOGRAPHIC)  
NE 1/4 FLORIEN 15' QUADRANGLE



Mapped by the Army Map Service  
Published for civil use by the Geological Survey  
Control by USGS, USC&GS, USCE, and Louisiana Geodetic Survey  
Topography from aerial photographs by photogrammetric methods  
Aerial photographs taken 1954. Field check 1954  
Polyconic projection. 1927 North American datum  
10,000-foot grid based on Louisiana coordinate system, north zone  
1000-meter Universal Transverse Mercator grid ticks,  
zone 15, shown in blue  
Unchecked elevations are shown in brown  
Dashed land lines indicate approximate location

TRUE NORTH  
MAGNETIC NORTH  
APPROXIMATE MEAN  
DECLINATION, 1954

SCALE 1:24000  
1 2 3 4 5 6 7 8 9 10 11 12 13 14 15 16 17 18 19 20 21 22 23 24 25 26 27 28 29 30 31 32 33 34 35 36 37 38 39 40 41 42 43 44 45 46 47 48 49 50 51 52 53 54 55 56 57 58 59 60 61 62 63 64 65 66 67 68 69 70 71 72 73 74 75 76 77 78 79 80 81 82 83 84 85 86 87 88 89 90 91 92 93 94 95 96 97 98 99 100  
1000 0 1000 2000 3000 4000 5000 6000 7000 FEET  
1 5 10 15 20 25 30 35 40 45 50 55 60 65 70 75 80 85 90 95 100  
1 KILOMETER  
CONTOUR INTERVAL 10 FEET  
DASHED LINES REPRESENT 5-FOOT CONTOURS  
DATUM IS MEAN SEA LEVEL

THIS MAP COMPLIES WITH NATIONAL MAP ACCURACY STANDARDS  
FOR SALE BY U. S. GEOLOGICAL SURVEY, DENVER 2, COLORADO OR WASHINGTON 25, D. C.  
AND BY THE STATE OF LOUISIANA, DEPARTMENT OF PUBLIC WORKS, BATON ROUGE 4, LOUISIANA  
A FOLDER DESCRIBING TOPOGRAPHIC MAPS AND SYMBOLS IS AVAILABLE ON REQUEST

USGS  
Historical File  
Topographic Division



ROAD CLASSIFICATION  
Medium-duty ——— Light-duty ———  
Unimproved dirt = = = = =

U.S.G.S.  
FILE COPY  
TOPOGRAPHIC DIVISION

PEASON, LA.  
NE 1/4 FLORIEN 15' QUADRANGLE  
N3122.5—W9315/7.5  
1954

DEC 11 1958

2460