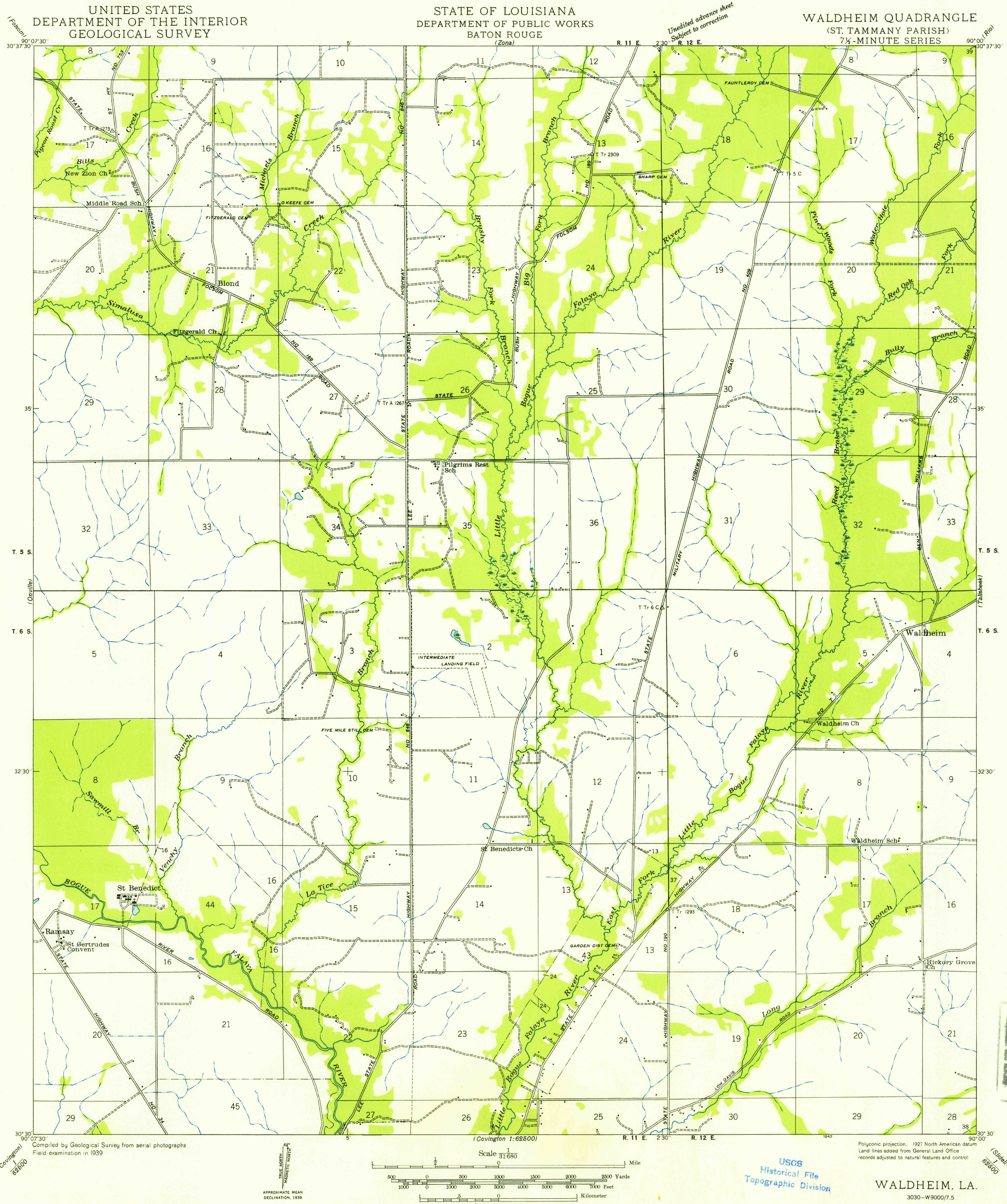


FILE COPY
Inspection and Editing



(Covington)
1:62500
Compiled by Geological Survey from aerial photographs
Field examination in 1939

TRUE NORTH
MAGNETIC NORTH
APPROXIMATE MEAN
DECLINATION, 1939

Scale 1:62500
0 500 1000 1500 2000 2500
0 1000 2000 3000 4000 5000 6000 7000
0 1 2 3 4 5
Feet
Kilometer

USGS
Historical File
Topographic Division

Polyconic projection, 1927 North American datum
Land lines added from General Land Office
records adjusted to natural features and control
WALDHEIM, LA.
3030-W9000/7.5

FILE COPY
Inspection and Editing

MAR 28 1954
1050