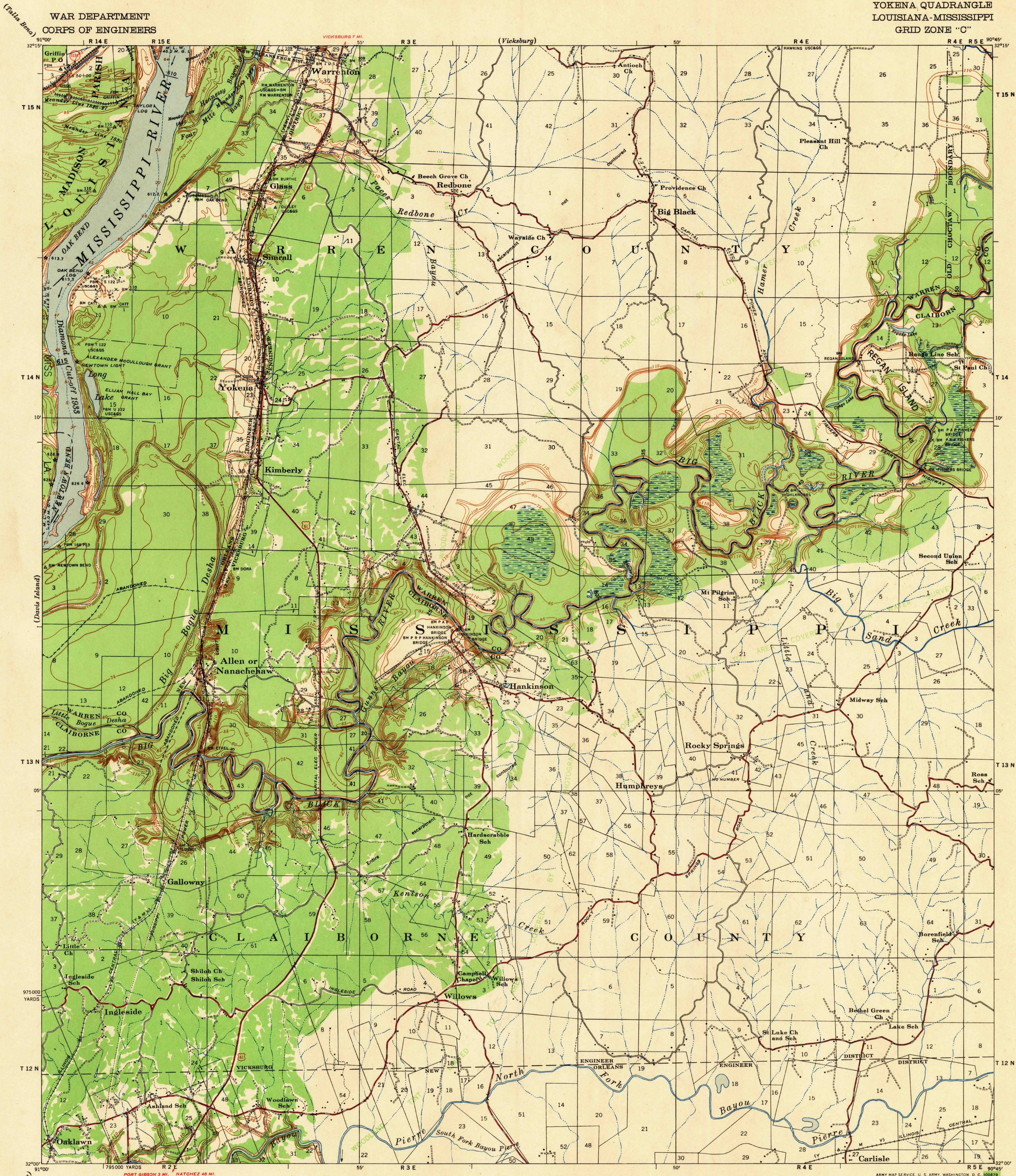
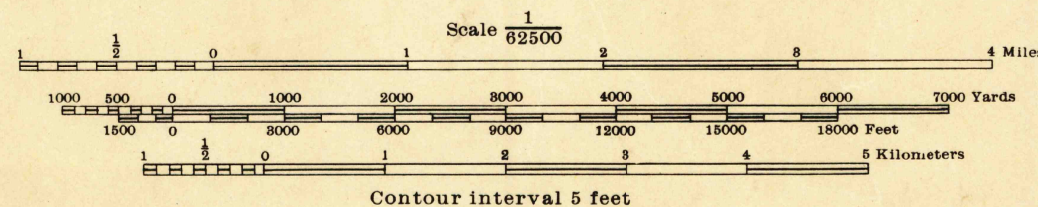


WAR DEPARTMENT
CORPS OF ENGINEERS

YOKENA QUADRANGLE
LOUISIANA-MISSISSIPPI
GRID ZONE "C"



Prepared under the direction of the President, Mississippi River Commission, Horizontal control by Mississippi River Commission and Corps of Engineers, U. S. Army, New Orleans District and Vicksburg District. Vertical control by Mississippi River Commission and Corps of Engineers, U. S. Army, New Orleans District and Vicksburg District. Descriptions, elevations and geodetic positions of bench marks may be obtained from New Orleans Engineer District, New Orleans, La. Topography by Corps of Engineers, U. S. Army, New Orleans District and Vicksburg District, 1930-1939. Depths shown along thalweg in Mississippi River are below Mean Low Water as of survey July and August 1939. Mean Low Water elevation is expressed in feet Mean Gulf Level and is shown on north and west borders. Revised by Mississippi River Commission, 1935 and 1939. Political boundaries are shown according to best available information, and are subject to change except where established by court decision. Area outside of Alluvial Valley is not contoured and is taken from Soil Survey Map of Claiborne County, Miss. (U. S. Dept. of Agriculture 1926) and George Ehrenborg map of Warren County, Miss. 1929; also Miss. State Highway maps adjusted to fit topography obtained from aerial photographs and Survey of Big Black River by Vicksburg District 1930 and 1939. Original U. S. Land Plats in Townships 12 and 13 N - Ranges 2 and 3 E are in doubt. Adjustments have been made from available data and lines as shown are subject to correction. Work under Flood Control Act shown as of December 1939. Polyconic Projection, North American Datum



FIVE THOUSAND YARD GRID COMPUTED FROM "GRID SYSTEM FOR PROGRESSIVE MAPS IN THE U. S." ZONE C, U. S. C. & G. S. SPECIAL PUBLICATION NO. 59. Additional copies may be procured from The President, Mississippi River Commission, Vicksburg, Miss. 20 cents per copy.

LEGEND
Levee Retards and dikes Revetment River Gage
Levee mile post Levee station Towhead
LMP L S TH
Distances above mouth of Big Black River are shown at 5 mile intervals. Distances below Cairo Gage on Mississippi River are shown at 5 mile intervals.
ROUTES USUALLY TRAVELED
HARD IMPERVIOUS SURFACES
OTHER SURFACE IMPROVEMENTS
U. S. ROUTE STATE ROUTE
APPROXIMATE MEAN DECLINATION 1942
ANNUAL MAGNETIC CHANGE 2' INCREASE

USGS
Historical File
Topographic Division
U.S.G.S.
FILE COPY
TOPOGRAPHIC DIVISION

YOKENA, LA.-MISS.
EDITION OF 1939
N3200-W9045/15