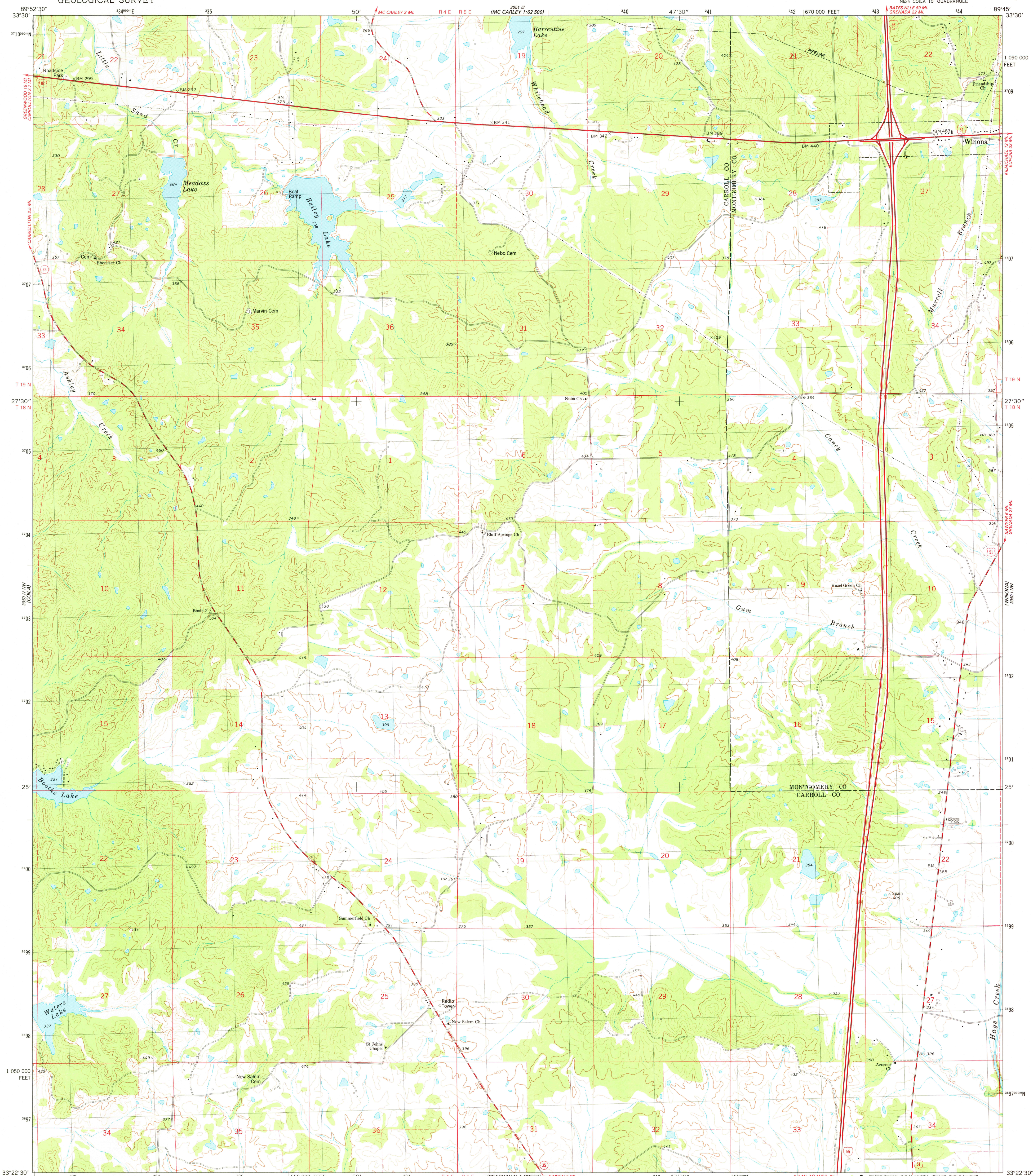


38° 15' N
100° 15' W
1:25,000

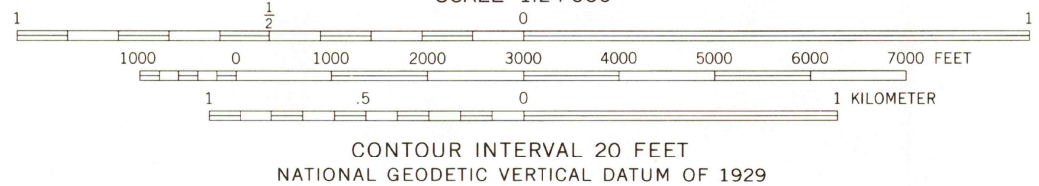
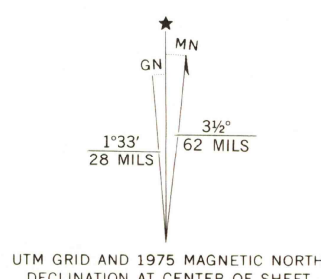
38° 15' N
100° 15' W
1:25,000

UNITED STATES
DEPARTMENT OF THE INTERIOR
GEOLOGICAL SURVEY

BAILEY LAKE QUADRANGLE
MISSISSIPPI
7.5 MINUTE SERIES (TOPOGRAPHIC)
NE 4 COIL 15' QUADRANGLE



Mapped, edited, and published by the Geological Survey
Control by USGS, NOS/NOAA, and Mississippi Highway Department
Topography by photogrammetric methods from aerial
photographs taken 1974. Field checked 1975
Projection and 10,000-foot grid ticks: Mississippi coordinate
system, west zone (transverse Mercator)
1000-meter Universal Transverse Mercator grid, zone 16
1927 North American datum
Fine red dashed lines indicate selected fence and field lines where
generally visible on aerial photographs. This information is unchecked



ROAD CLASSIFICATION
Primary highway, hard surface
Secondary highway, hard surface
Unimproved road
Light-duty road, hard or improved surface
Interstate Route
U. S. Route
State Route

USGS
Historical File
Topographic Division

BAILEY LAKE, MISS.
NE 4 COIL 15' QUADRANGLE
N3322.5 — W8945/7.5

1975

AMS 3050 IV NE—SERIES W843

THIS MAP COMPLIES WITH NATIONAL MAP ACCURACY STANDARDS
FOR SALE BY U. S. GEOLOGICAL SURVEY, RESTON, VIRGINIA 22092
A FOLDER DESCRIBING TOPOGRAPHIC MAPS AND SYMBOLS IS AVAILABLE ON REQUEST

FEB 23 1978
21800