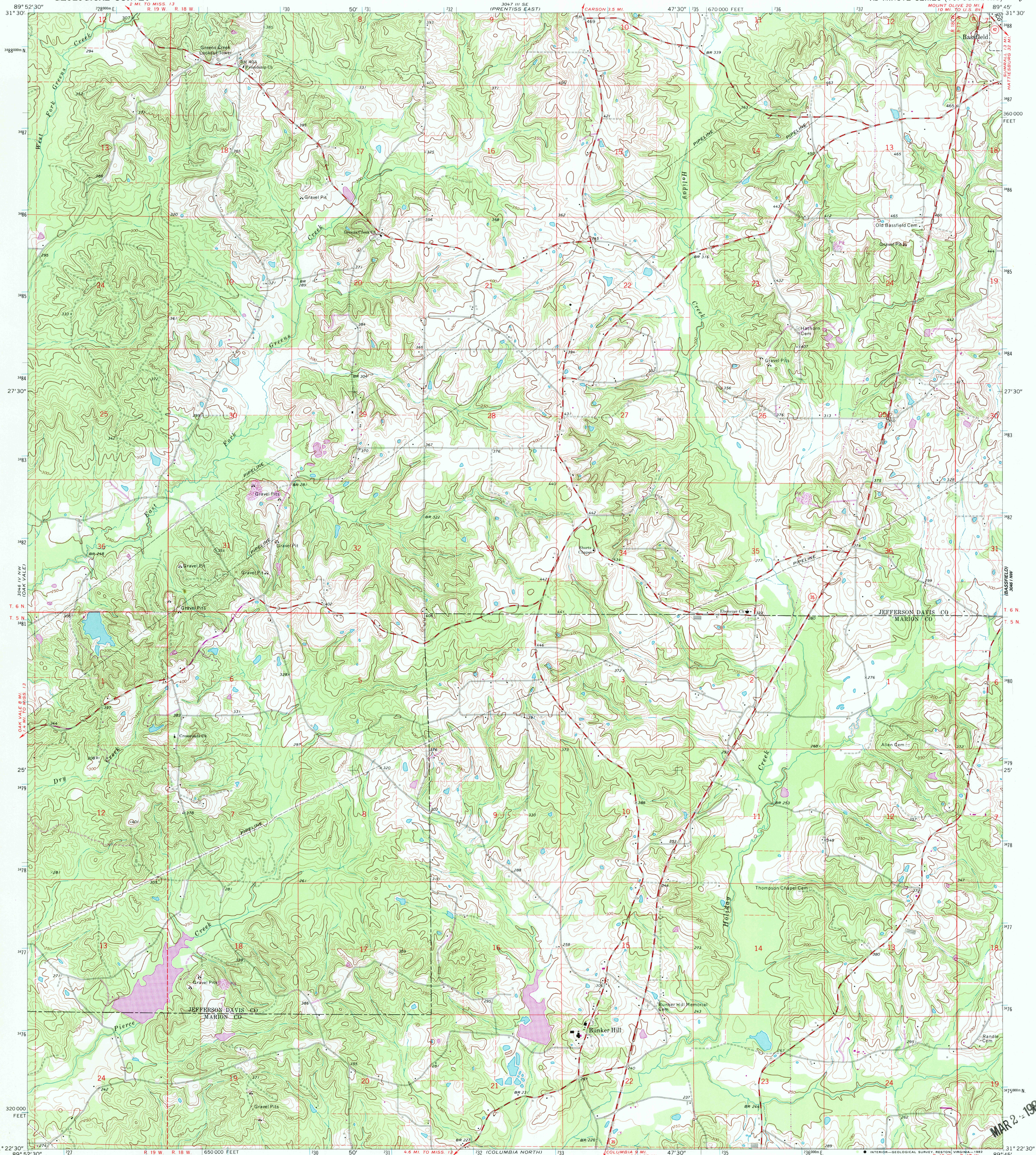


UNITED STATES  
DEPARTMENT OF THE INTERIOR  
GEOLOGICAL SURVEY

BUNKER HILL QUADRANGLE  
MISSISSIPPI  
7.5 MINUTE SERIES (TOPOGRAPHIC)



Mapped, edited, and published by the Geological Survey

Control by USGS and USC&GS

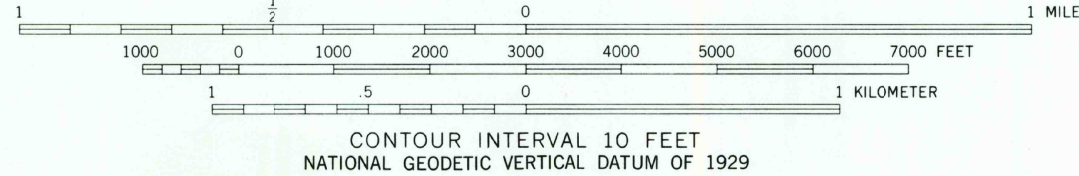
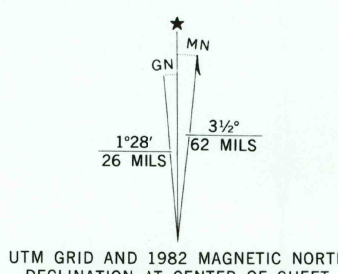
Topography by photogrammetric methods from aerial photographs taken 1968. Field checked 1970

Polyconic projection. 1927 North American datum  
10,000-foot grid based on Mississippi coordinate system, west zone  
1000-meter Universal Transverse Mercator grid ticks,  
zone 16, shown in blue

Fine red dashed lines indicate selected fence and field lines where  
generally visible on aerial photographs. This information is unchecked

To place on the predicted North American Datum 1983  
move the projection lines 15 meters south and  
7 meters east as shown by dashed corner ticks

Revisions shown in purple compiled from aerial photographs taken 1981  
and other sources. This information not field checked. Map edited 1982



ROAD CLASSIFICATION  
Secondary highway, all weather, Light-duty road, all weather,  
hard surface  
Unimproved road, fair or dry weather  
State Route

RETURN TO:  
USGS AND HISTORICAL MAP ARCHIVES BUNKER HILL, MISS.  
N3122.5-W8945.7.5

1970  
PHOTOREVISED 1982  
DMA 3046 IV NE-SERIES V843

THIS MAP COMPLIES WITH NATIONAL MAP ACCURACY STANDARDS  
FOR SALE BY U. S. GEOLOGICAL SURVEY, RESTON, VIRGINIA 22092  
A FOLDER DESCRIBING TOPOGRAPHIC MAPS AND SYMBOLS IS AVAILABLE ON REQUEST

MAR 2 - 1983