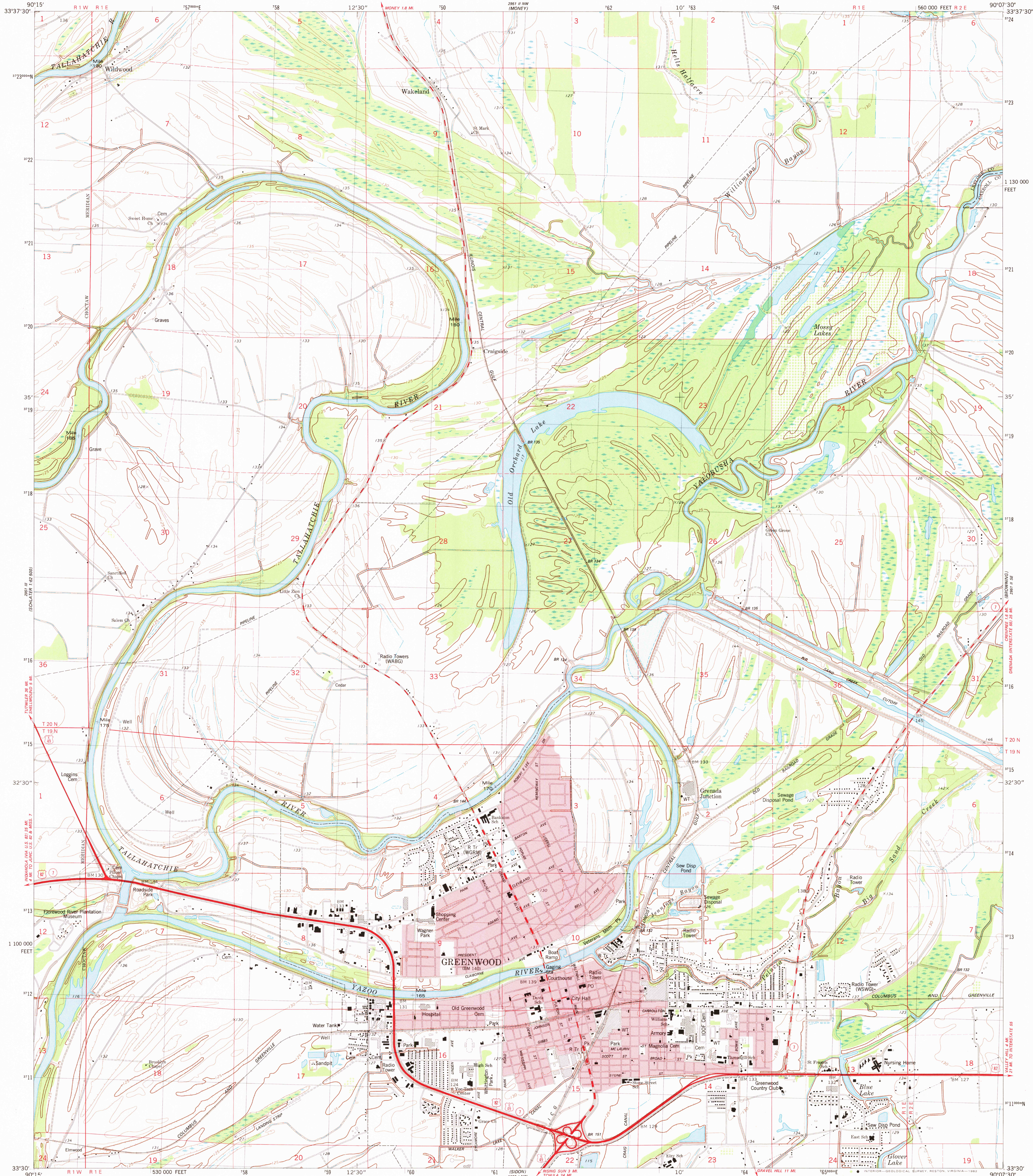


UNITED STATES
DEPARTMENT OF THE INTERIOR
GEOLOGICAL SURVEY

GREENWOOD QUADRANGLE

MISSISSIPPI
7.5 MINUTE SERIES (TOPOGRAPHIC)

SW/4 GREENWOOD 15' QUADRANGLE



Mapped, edited, and published by the Geological Survey

Control by USGS, NOS/NOAA, and Mississippi Highway Department

Topography by photogrammetric methods from aerial photographs taken 1976. Field checked 1977. Map edited 1982

Projection and 10,000-foot grid ticks: Mississippi coordinate system, west zone (transverse Mercator)

1000-meter Universal Transverse Mercator grid, zone 15

1927 North American Datum

To place on the predicted North American Datum 1983

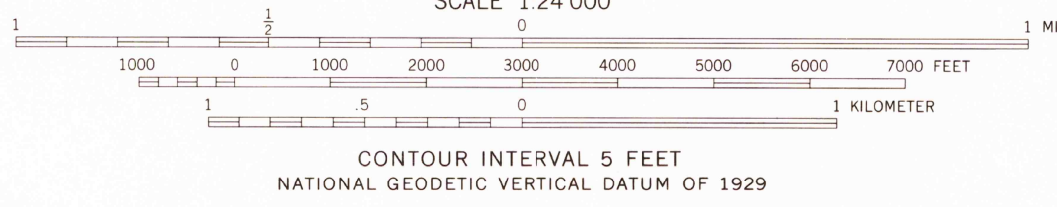
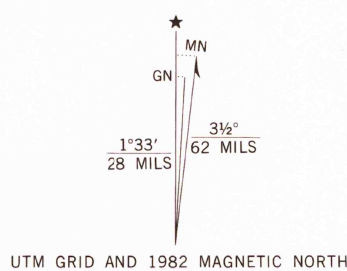
move the projection lines 10 meters south and

8 meters east as shown by dashed corner ticks

Red tint indicates areas in which only landmark buildings are shown

Fine red dashed lines indicate selected fence and field lines where

generally visible on aerial photographs. This information is unchecked



CONTOUR INTERVAL 5 FEET
NATIONAL GEODETIC VERTICAL DATUM OF 1929

THIS MAP COMPLIES WITH NATIONAL MAP ACCURACY STANDARDS
FOR SALE BY U. S. GEOLOGICAL SURVEY, RESTON, VIRGINIA 22092
A FOLDER DESCRIBING TOPOGRAPHIC MAPS AND SYMBOLS IS AVAILABLE ON REQUEST



QUADRANGLE LOCATION

ROAD CLASSIFICATION

- Primary highway, hard surface
- Secondary highway, hard surface
- Light-duty road, hard or improved surface
- Unimproved road
- Interstate Route
- U. S. Route
- State Route

GREENWOOD, MISS.
SW/4 GREENWOOD 15' QUADRANGLE
N3330-W9007.5/7.5

1982

DMA 2951 II SW-SERIES V843

DEC 15 1982