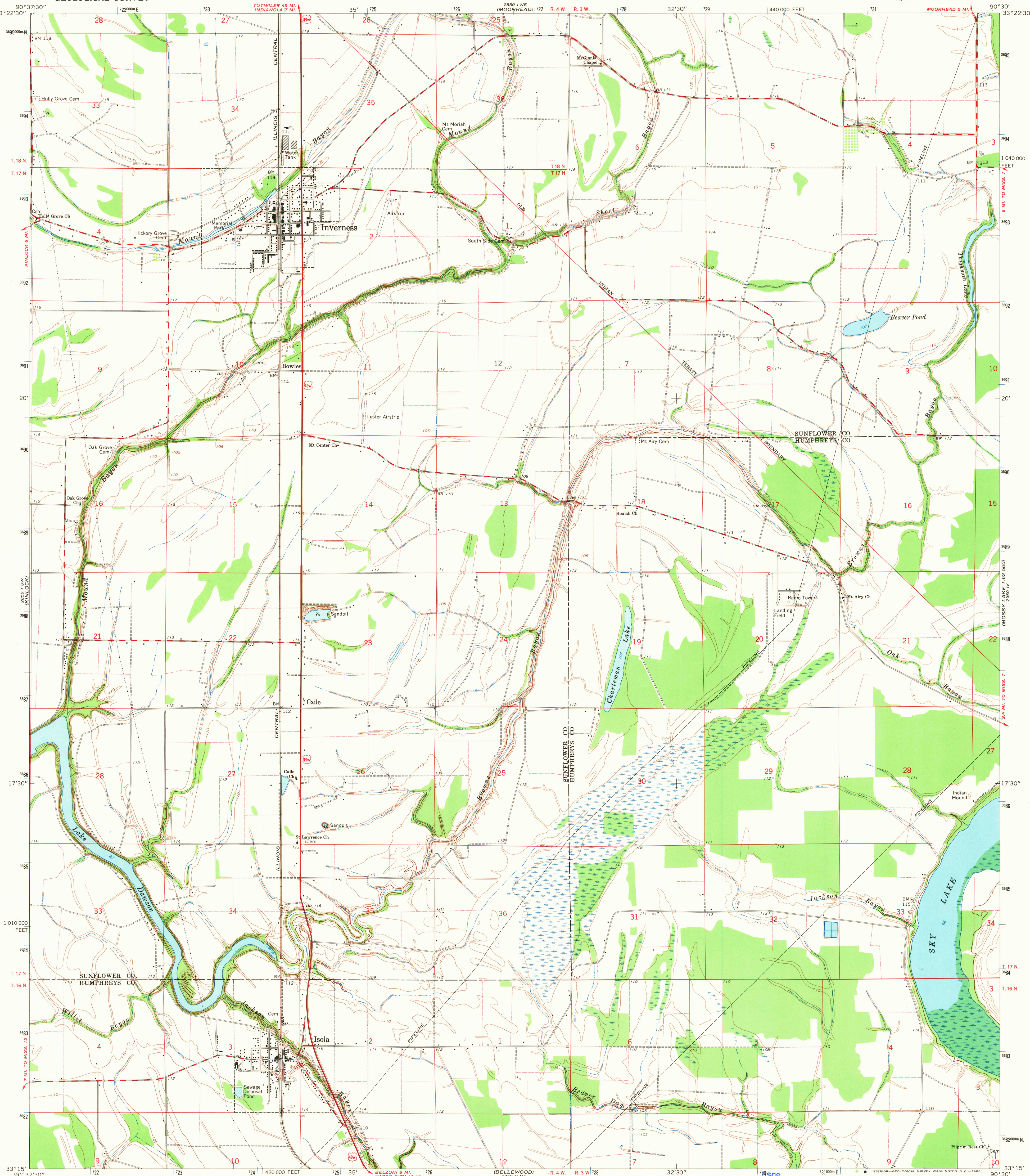
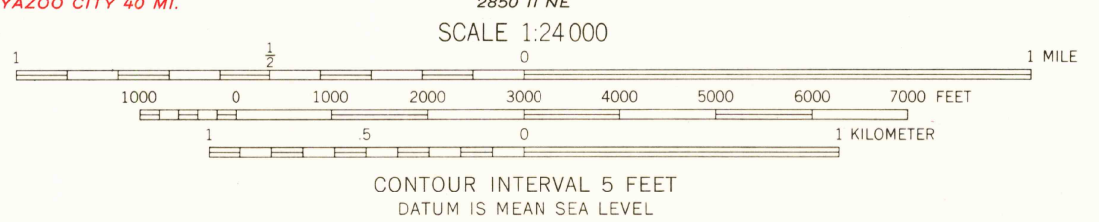
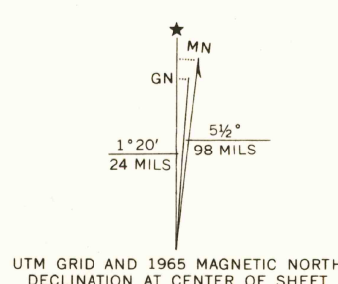


UNITED STATES
DEPARTMENT OF THE INTERIOR
GEOLOGICAL SURVEY

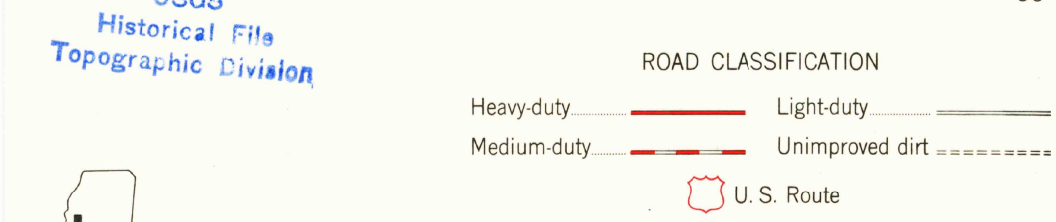
INVERNESS QUADRANGLE
MISSISSIPPI
7.5 MINUTE SERIES (TOPOGRAPHIC)
SE/4 BAIRD 15' QUADRANGLE



Mapped, edited, and published by the Geological Survey
Control by USGS and USC&GS
Planimetry by photogrammetric methods from aerial photographs
taken 1961. Topography by planetable surveys 1965
Polyconic projection. 1927 North American datum
10,000-foot grid based on Mississippi coordinate system, west zone
1000-meter Universal Transverse Mercator grid ticks,
zone 15, shown in blue
Fine red dashed lines indicate selected fence and field lines where
generally visible on aerial photographs. This information is unchecked



THIS MAP COMPLIES WITH NATIONAL MAP ACCURACY STANDARDS
FOR SALE BY U.S. GEOLOGICAL SURVEY, WASHINGTON, D.C. 20242
A FOLDER DESCRIBING TOPOGRAPHIC MAPS AND SYMBOLS IS AVAILABLE ON REQUEST



U.S.G.S.
FILE COPY
TOPOGRAPHIC DIVISION

INVERNESS, MISS.
SE/4 BAIRD 15' QUADRANGLE
N3315-W9030/7.5

1965
AMS 2850 1 SE-SERIES V843

2650
DEC 20 1965