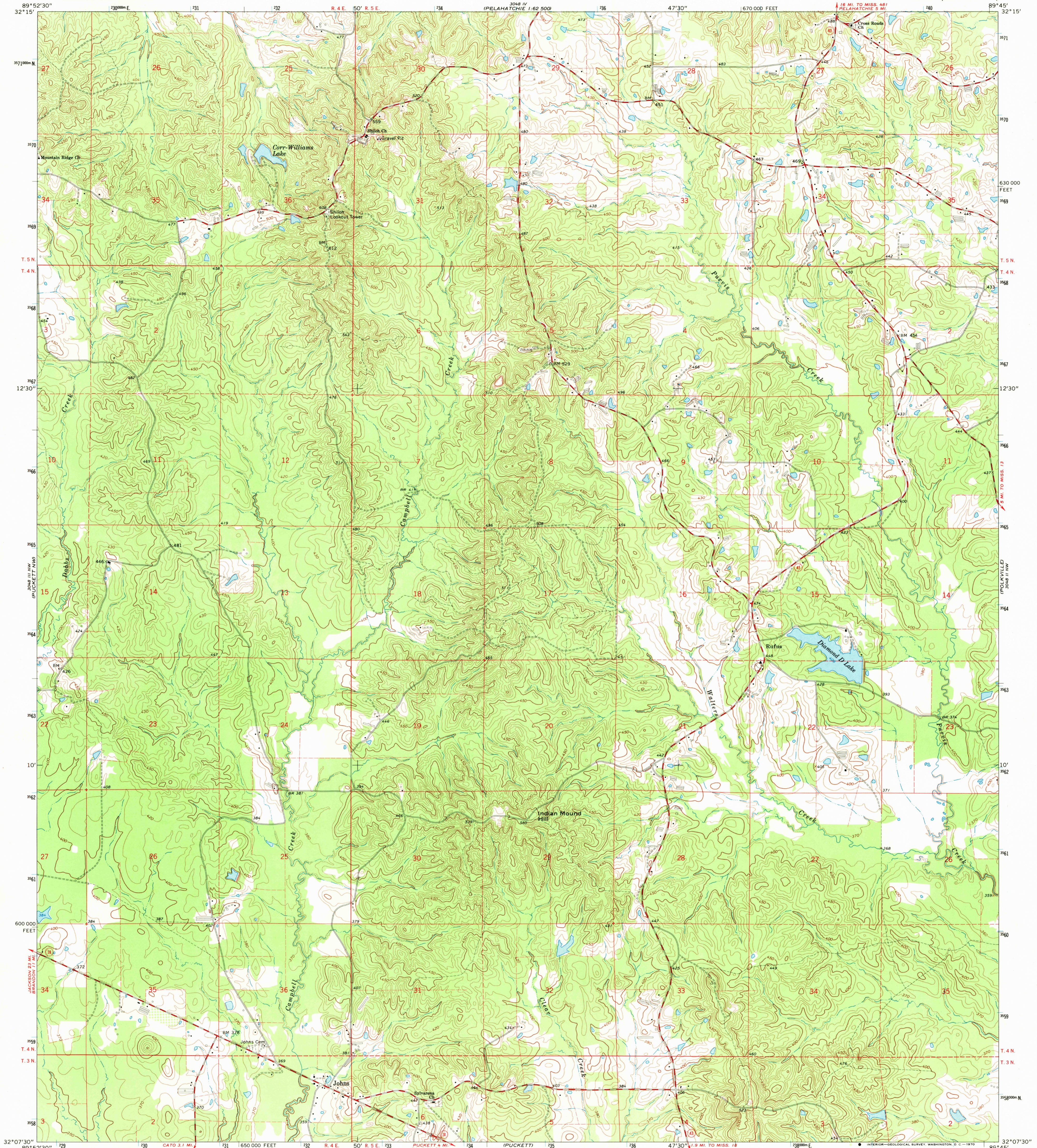


3048 IV  
(PELAHATCHIE 1:62 500)

UNITED STATES  
DEPARTMENT OF THE INTERIOR  
GEOLOGICAL SURVEY

JOHNS QUADRANGLE  
MISSISSIPPI—RANKIN CO.  
7.5 MINUTE SERIES (TOPOGRAPHIC)

3048 I  
(MORTON 1:62 500)

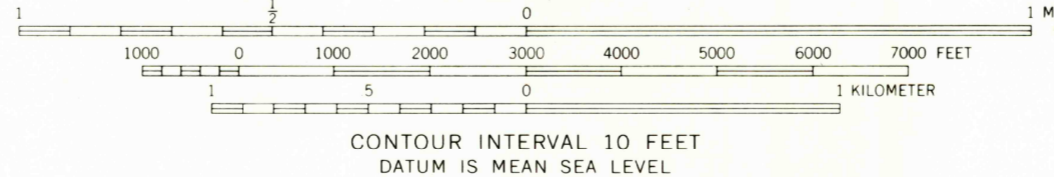
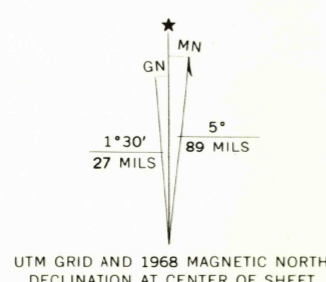


Mapped, edited, and published by the Geological Survey  
Control by USGS and USC&GS

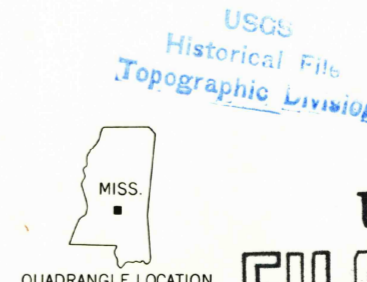
Topography by photogrammetric methods from aerial  
photographs taken 1966. Field checked 1968

Polycyclic projection. 1927 North American datum  
10,000-foot grid based on Mississippi coordinate system, west zone  
1000-meter Universal Transverse Mercator grid ticks,  
zone 16, shown in blue

Fine red dashed lines indicate selected fence and field lines where  
generally visible on aerial photographs. This information is unchecked



THIS MAP COMPLIES WITH NATIONAL MAP ACCURACY STANDARDS  
FOR SALE BY U. S. GEOLOGICAL SURVEY, WASHINGTON, D. C. 20242  
A FOLDER DESCRIBING TOPOGRAPHIC MAPS AND SYMBOLS IS AVAILABLE ON REQUEST



U.S.G.S.  
**FILE COPY**  
TOPOGRAPHIC DIVISION

ROAD CLASSIFICATION  
Medium-duty ——— Light-duty ———  
Unimproved dirt ———  
State Route ○

JOHNS, MISS.  
N3207.5—W8945/7.5

1968

AMS 3048 III NE—SERIES V843

2500  
JUN 29 1970