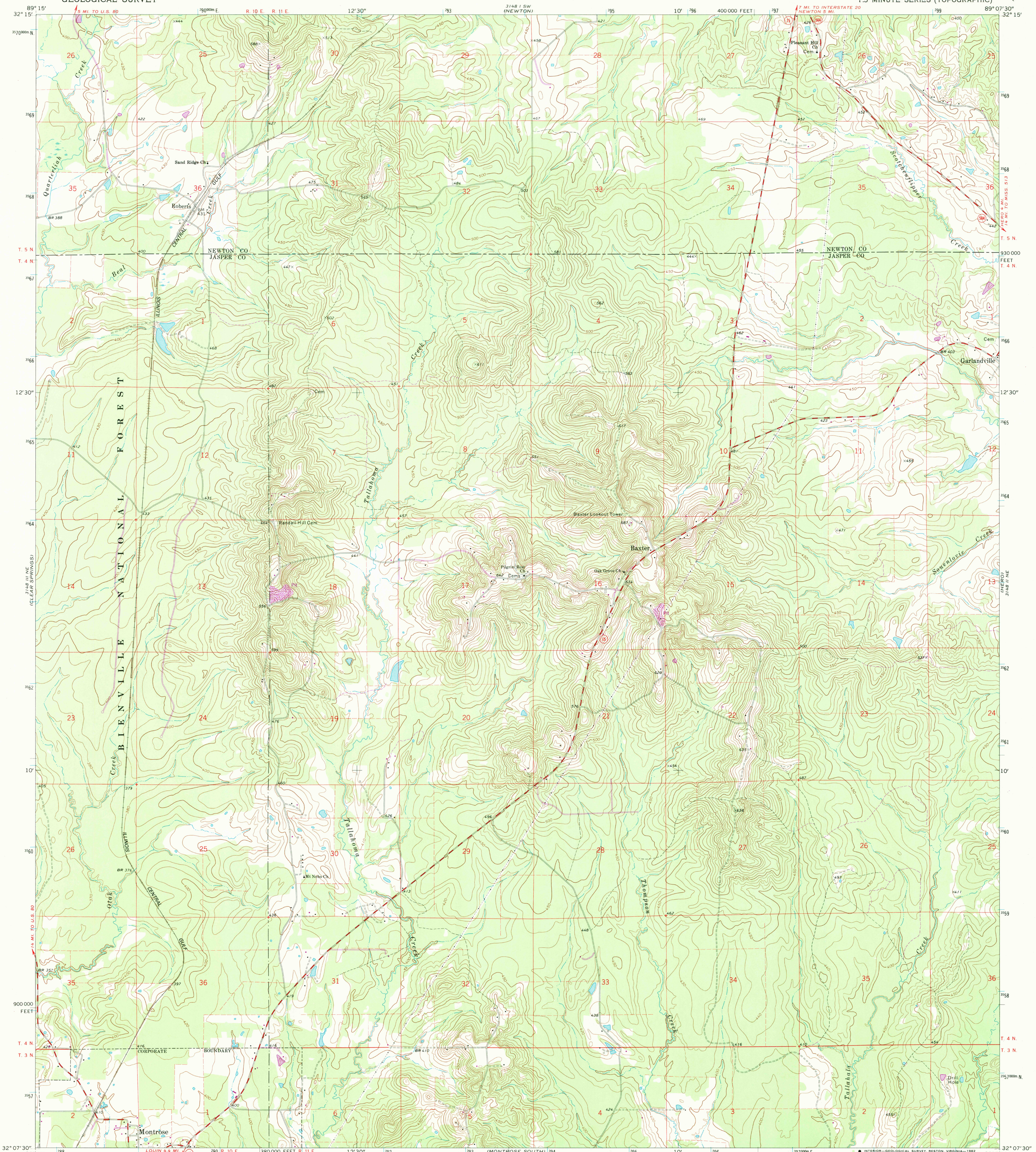


3148 I SE
(PAUL DING)

UNITED STATES
DEPARTMENT OF THE INTERIOR
GEOLOGICAL SURVEY

MONTROSE NORTH QUADRANGLE
MISSISSIPPI
7.5 MINUTE SERIES (TOPOGRAPHIC)

3148 I SE
(MICROFILM)



Mapped, edited, and published by the Geological Survey

Control by USGS and USC&GS

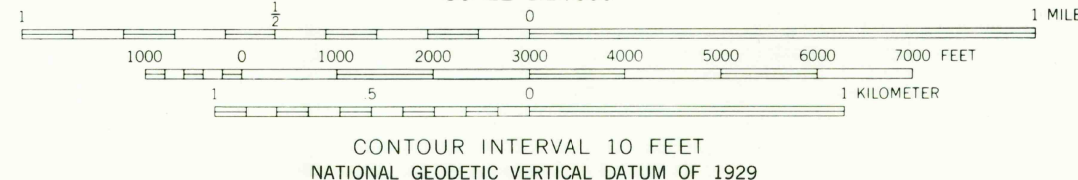
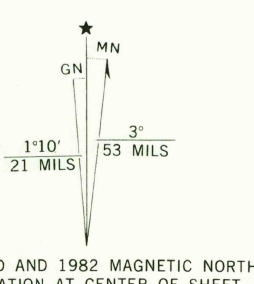
Topography by photogrammetric methods from aerial photographs taken 1968. Field checked 1970

Polyconic projection. 1927 North American datum
10,000-foot grid based on Mississippi coordinate system, east zone
1000-meter Universal Transverse Mercator grid ticks,
zone 16, shown in blue

To place on the predicted North American Datum 1983
move the projection lines 14 meters south and
5 meters east as shown by dashed corner ticks

There may be private inholdings within the boundaries of
the National or State reservations shown on this map

Revisions shown in purple compiled from aerial photographs taken 1980
and other sources. This information not field checked. Map edited 1982



ROAD CLASSIFICATION
Secondary highway, all weather, Light-duty road, all weather,
hard surface
Unimproved road, fair or dry
weather
State Route

MONTROSE NORTH, MISS.
N3207.5-W8907.5/7.5

RETURN TO:
USGS AND HISTORICAL MAP ARCHIVES

1970
PHOTOREVISED 1982
DMA 3148 II NW-SERIES V843

MAR 18 1983

2414