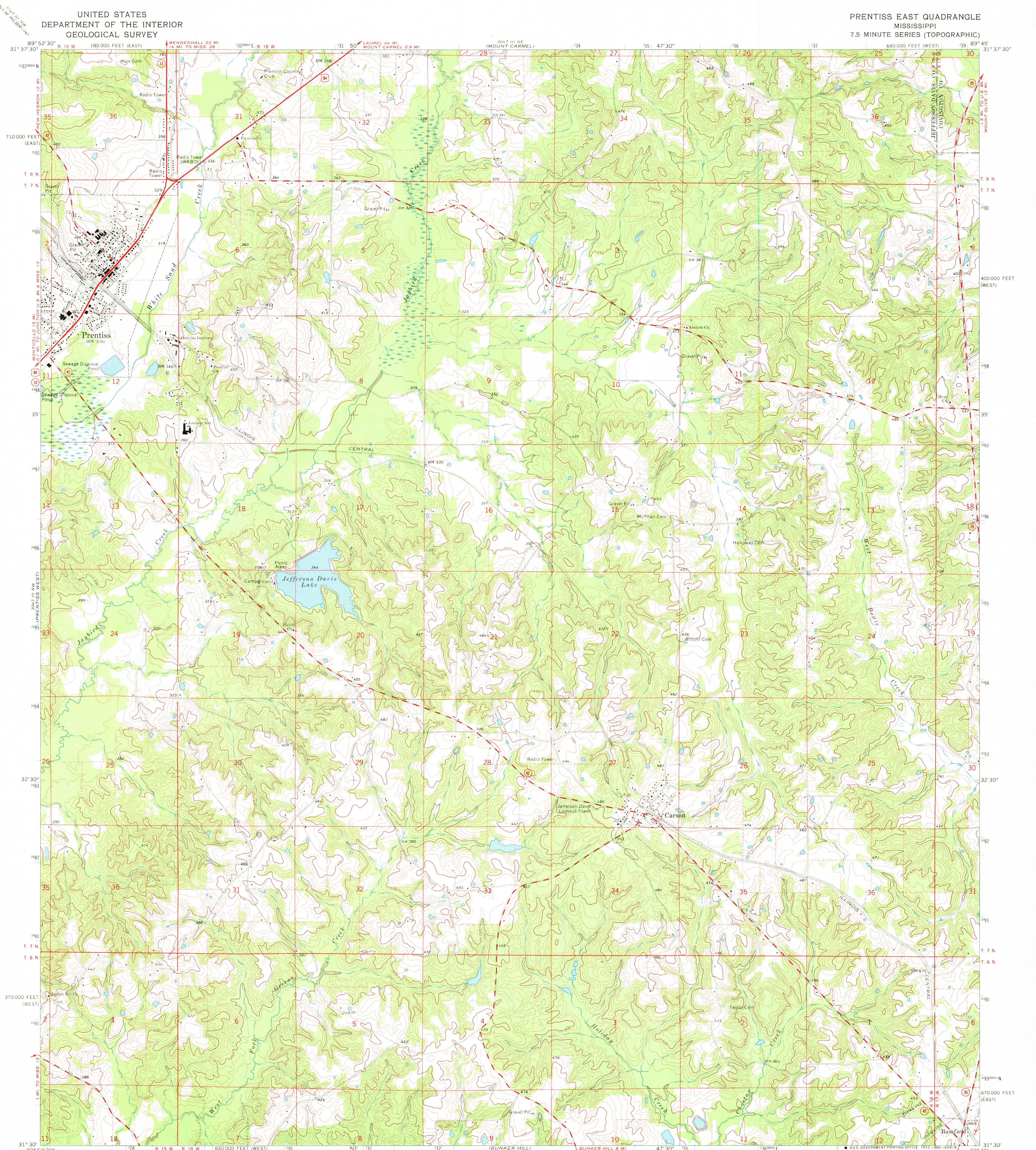
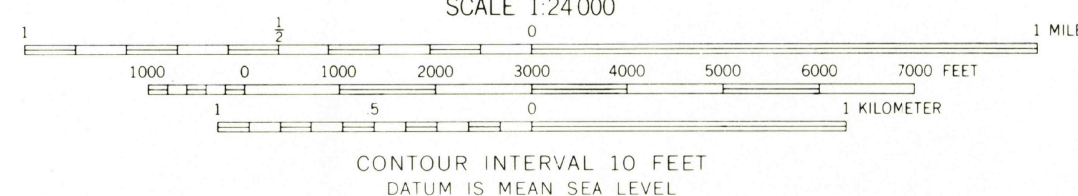
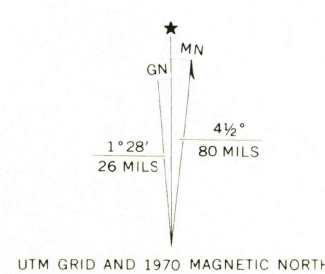




PRENTISS EAST QUADRANGLE  
MISSISSIPPI  
7.5 MINUTE SERIES (TOPOGRAPHIC)



Mapped, edited, and published by the Geological Survey  
Control by USGS and USMC&S  
Topography by photogrammetric methods from aerial  
photographs taken 1968. Field checked 1970  
Polycyclic projection. 1927 North American datum  
10,000-foot grids based on Mississippi coordinate system,  
west and east zones  
1000-meter Universal Transverse Mercator grid ticks,  
zone 16, shown in blue  
Fine red dashed lines indicate selected fence and field lines where  
generally visible on aerial photographs. This information is unchecked



THIS MAP COMPLIES WITH NATIONAL MAP ACCURACY STANDARDS  
FOR SALE BY U. S. GEOLOGICAL SURVEY, WASHINGTON, D. C. 20242  
A FOLDER DESCRIBING TOPOGRAPHIC MAPS AND SYMBOLS IS AVAILABLE ON REQUEST

ROAD CLASSIFICATION	
Primary highway, all weather, hard surface <u>                    </u>	Light-duty road, all weather, improved surface <u>                    </u>
Secondary highway, all weather, hard surface <u>                    </u>	Unimproved road, fair or dry weather <u>                    </u>
 U. S. Route	 State Route

PRENTISS EAST, MISS.  
N3130—W8945/7.5

1970

AMS 3047 III SE-SERIES V843

WH  
3000