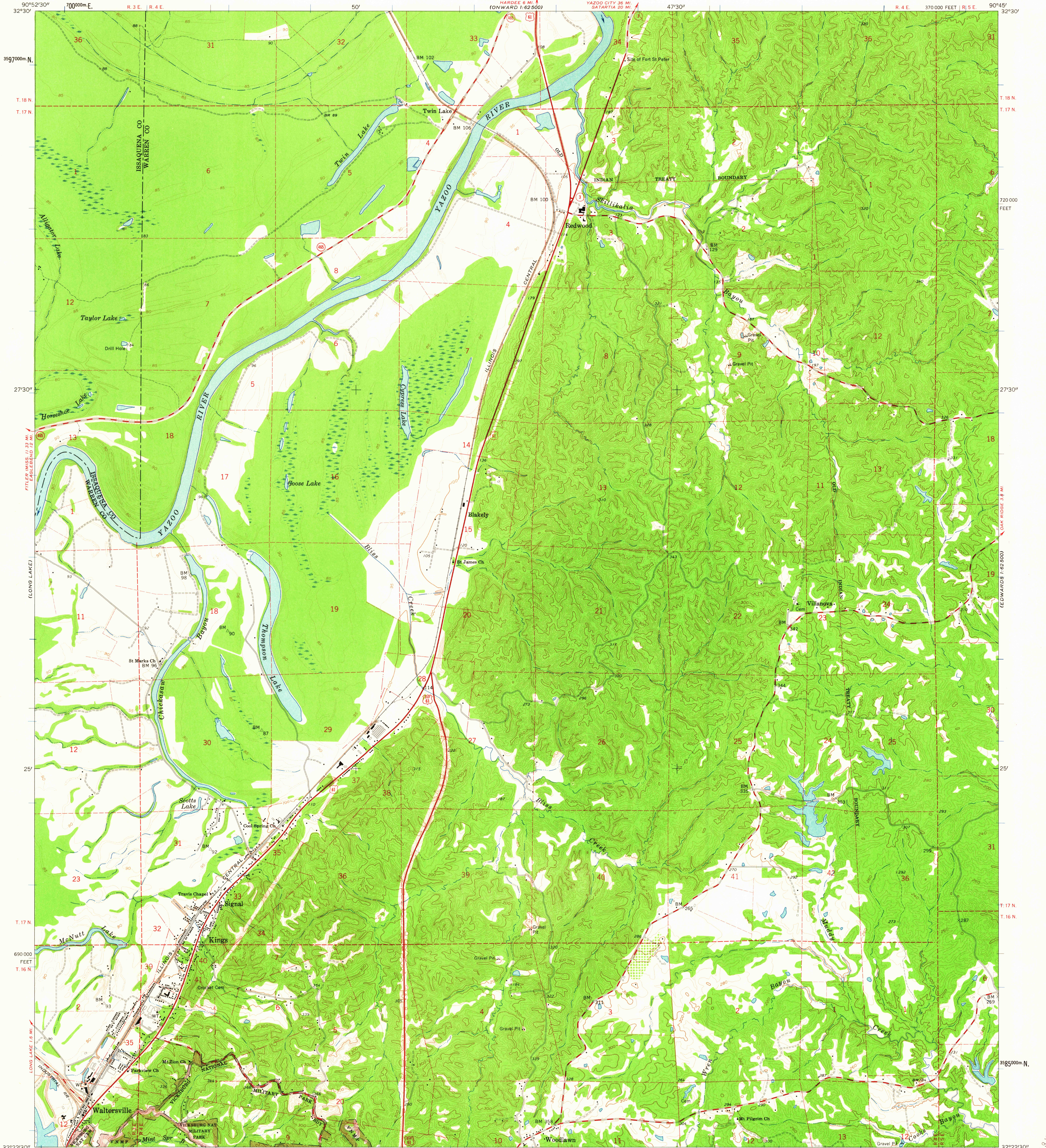


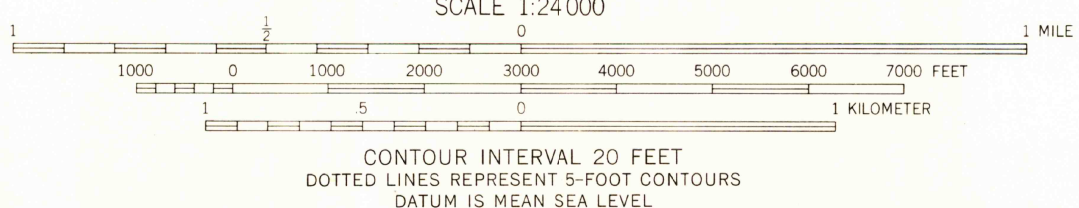
UNITED STATES  
DEPARTMENT OF THE INTERIOR  
GEOLOGICAL SURVEY

REDWOOD QUADRANGLE  
MISSISSIPPI  
7.5 MINUTE SERIES (TOPOGRAPHIC)  
NE 1/4 VICKSBURG 15' QUADRANGLE



Mapped, edited, and published by the Geological Survey  
Control by USGS and USC&GS  
Topography by photogrammetric methods from aerial  
photographs taken 1961-62 and planetable surveys 1962  
and in part by the City of Vicksburg  
Polyconic projection. 1927 North American datum  
10,000-foot grid based on Mississippi coordinate system, west zone  
1000-meter Universal Transverse Mercator grid ticks,  
zone 15, shown in blue  
Fine red dashed lines indicate selected fence and field lines where  
generally visible on aerial photographs. This information is unchecked

TRUE NORTH  
MAGNETIC NORTH  
APPROXIMATE MEAN  
DECLINATION, 1962



USGS  
Historical File  
Topographic Division  
MISS.  
QUADRANGLE LOCATION

ROAD CLASSIFICATION  
Heavy-duty ——— Light-duty ———  
Medium-duty ——— Unimproved dirt ———  
U.S. Route ——— State Route ———

REDWOOD, MISS.  
NE 1/4 VICKSBURG 15' QUADRANGLE  
N 3222.5—W 9045/7.5

1962

2070