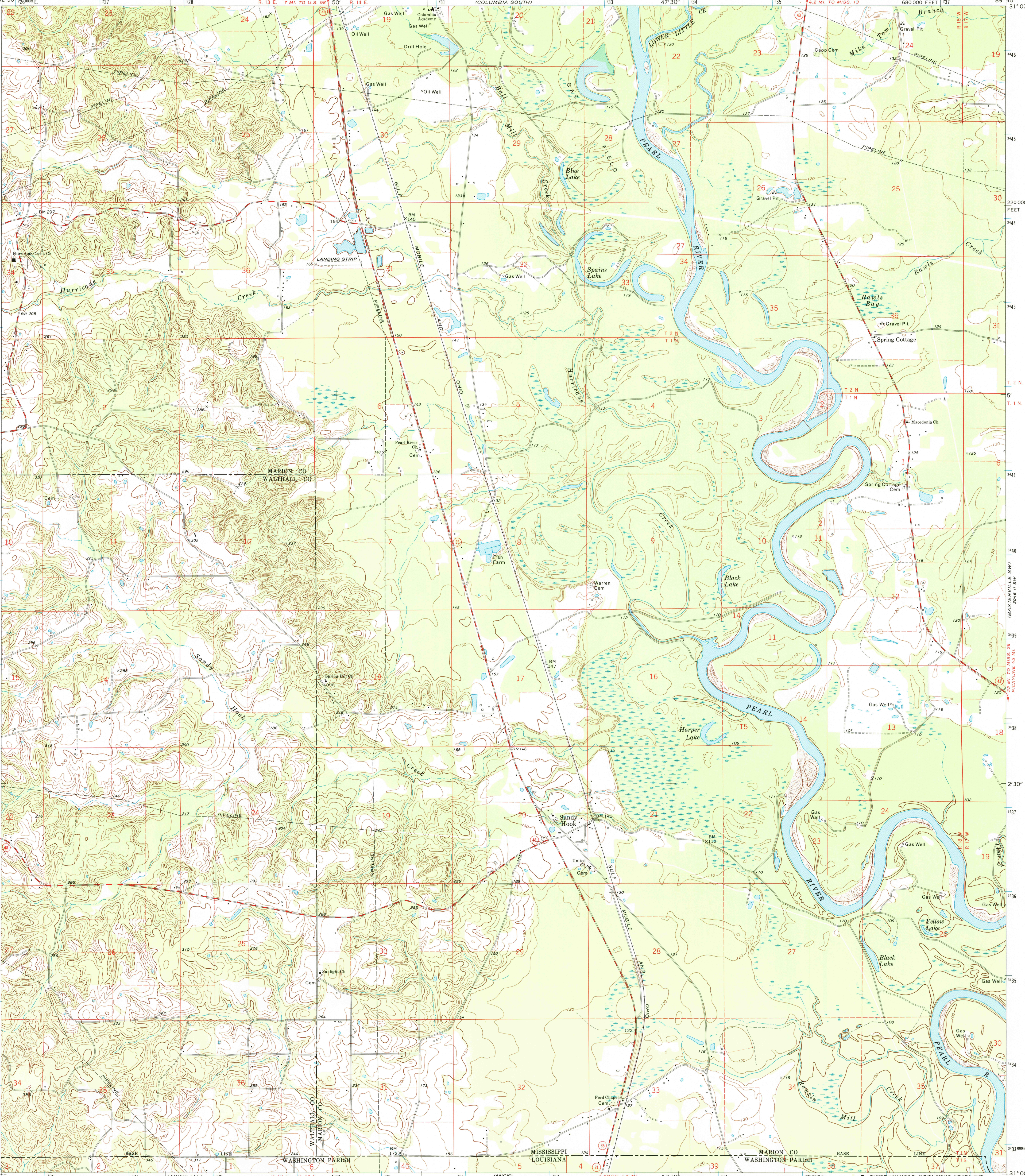


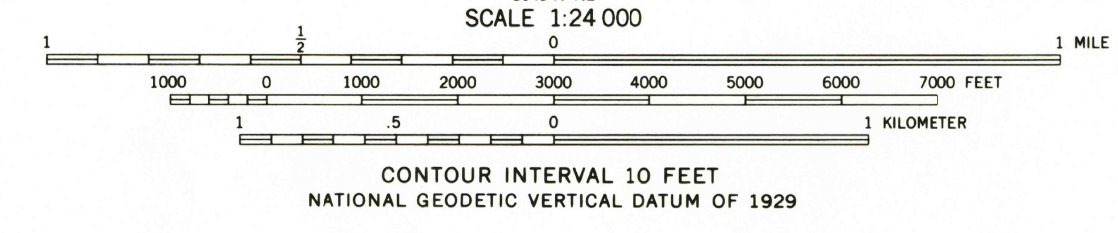
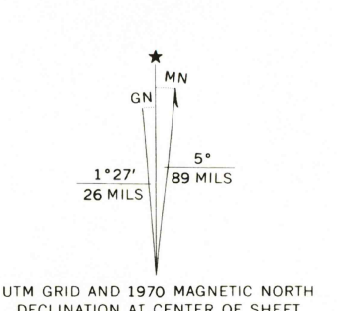


UNITED STATES
DEPARTMENT OF THE INTERIOR
GEOLOGICAL SURVEY

SANDY HOOK QUADRANGLE
MISSISSIPPI-LOUISIANA
7.5 MINUTE SERIES (TOPOGRAPHIC)



Mapped, edited, and published by the Geological Survey
Control by USGS and USC&GS
Topography by photogrammetric methods from aerial photographs taken 1968. Field checked 1970
Polyconic projection. 1927 North American datum
10,000-foot grid based on Mississippi coordinate system, west zone
1000-meter Universal Transverse Mercator grid ticks, zone 16, shown in blue
Fine red dashed lines indicate selected fence and field lines where generally visible on aerial photographs. This information is unchecked
To place on the predicted North American Datum 1983, move the projection lines 16 meters south and 7 meters east as shown by dashed corner ticks



THIS MAP COMPLIES WITH NATIONAL MAP ACCURACY STANDARDS
FOR SALE BY U.S. GEOLOGICAL SURVEY, DENVER, COLORADO 80225, OR RESTON, VIRGINIA 22092
AND LOUISIANA DEPARTMENT OF PUBLIC WORKS, BATON ROUGE, LOUISIANA 70804
A FOLDER DESCRIBING TOPOGRAPHIC MAPS AND SYMBOLS IS AVAILABLE ON REQUEST

ROAD CLASSIFICATION

Secondary highway, all weather, Light-duty road, all weather, hard surface

Unimproved road, fair or dry weather

State Route

USGS NHD HISTORICAL MAP

APR 15 1986

REC'D FILE COPY

MISSISSIPPI

QUADRANGLE LOCATION

SANDY HOOK, MISS.-LA.

31089-A7-TF-024

1970

DMA 3046 III SE-SERIES V843