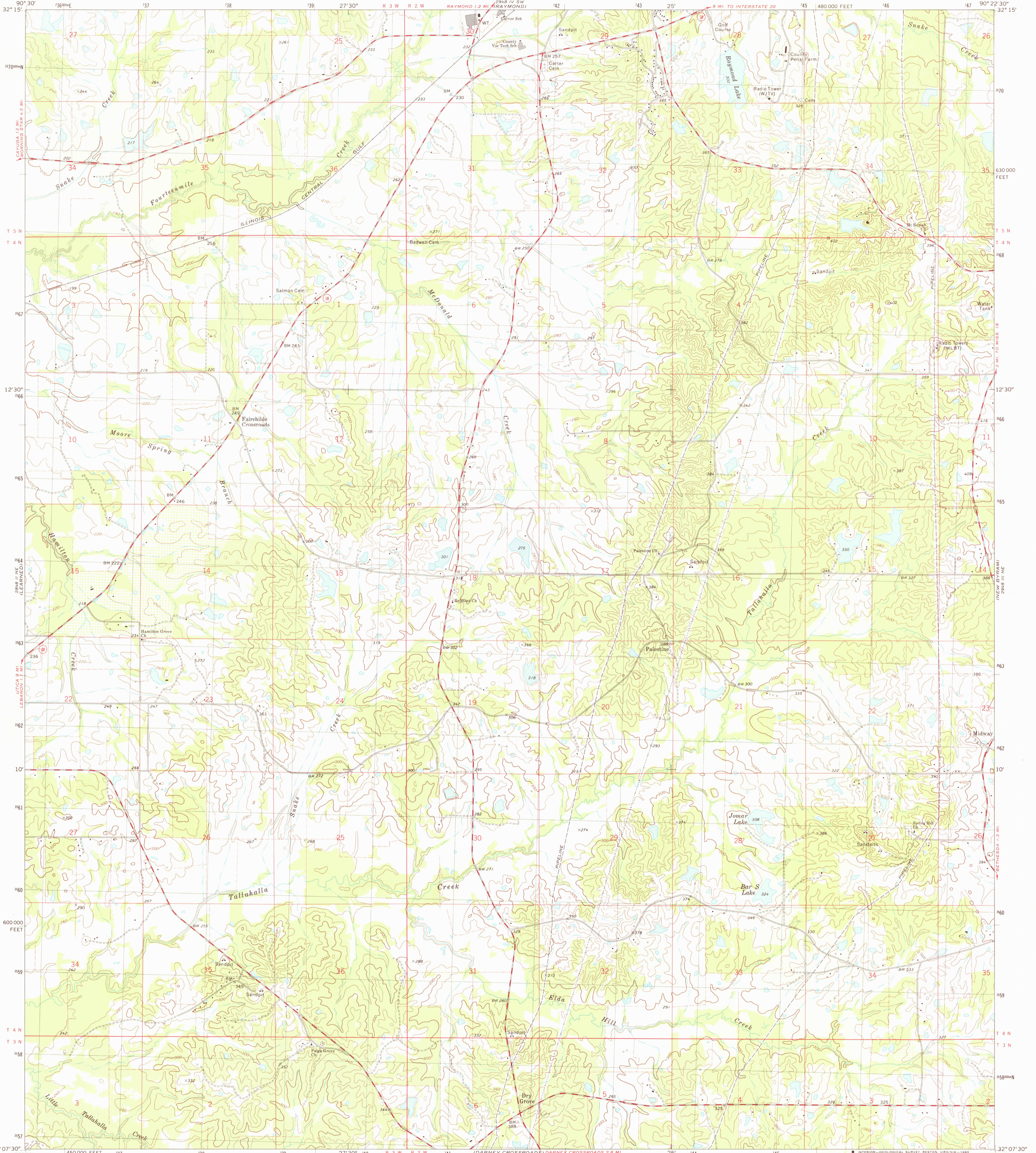


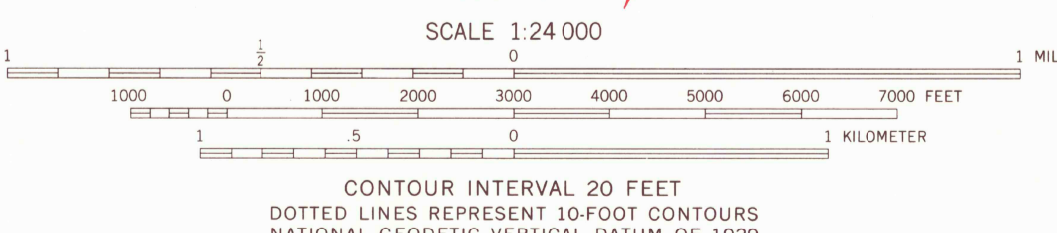
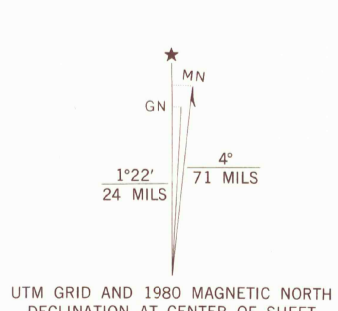
2848 I SE (EDWARDS)
2848 I NE (CLEARVIEW)
2848 I SW (LEGAN)
2848 I NW (NEWBYRAM)
2848 I SE (CLINTON)
UTICA 61571
2848 I SE

UNITED STATES
DEPARTMENT OF THE INTERIOR
GEOLOGICAL SURVEY

TERRY NW QUADRANGLE
MISSISSIPPI-HINDS CO.
7.5 MINUTE SERIES (TOPOGRAPHIC)



Mapped, edited, and published by the Geological Survey
Control by USGS, NOS/NOAA, and Mississippi State Highway Department
Topography by photogrammetric methods from aerial photographs
taken 1968. Field checked 1971
Revision primarily limited to detail visible on high-altitude photographs
taken 1977. Field checked 1979. Map edited 1980
Projection and 10,000-foot grid ticks: Mississippi coordinate
system, west zone (transverse Mercator)
1000-meter Universal Transverse Mercator grid, zone 15
1927 North American Datum
To place on the predicted North American Datum 1983
move the projection lines 14 meters south and
9 meters east as shown by dashed corner ticks
Fine red dashed lines indicate selected fence and field lines where
generally visible on aerial photographs. This information is unchecked



THIS MAP COMPLIES WITH NATIONAL MAP ACCURACY STANDARDS
FOR SALE BY U. S. GEOLOGICAL SURVEY, RESTON, VIRGINIA 22092
A FOLDER DESCRIBING TOPOGRAPHIC MAPS AND SYMBOLS IS AVAILABLE ON REQUEST



ROAD CLASSIFICATION
Primary highway, hard surface
Secondary highway, hard surface
Light-duty road, hard or improved surface
Unimproved road
Interstate Route
U. S. Route
State Route
USGS
Historical File
Topographic Division
TERRY NW, MISS.
N3207.5-W9022.5/7.5
1980
DMA 2848 III NW-SERIES V843

JUN - 6 1980

1700