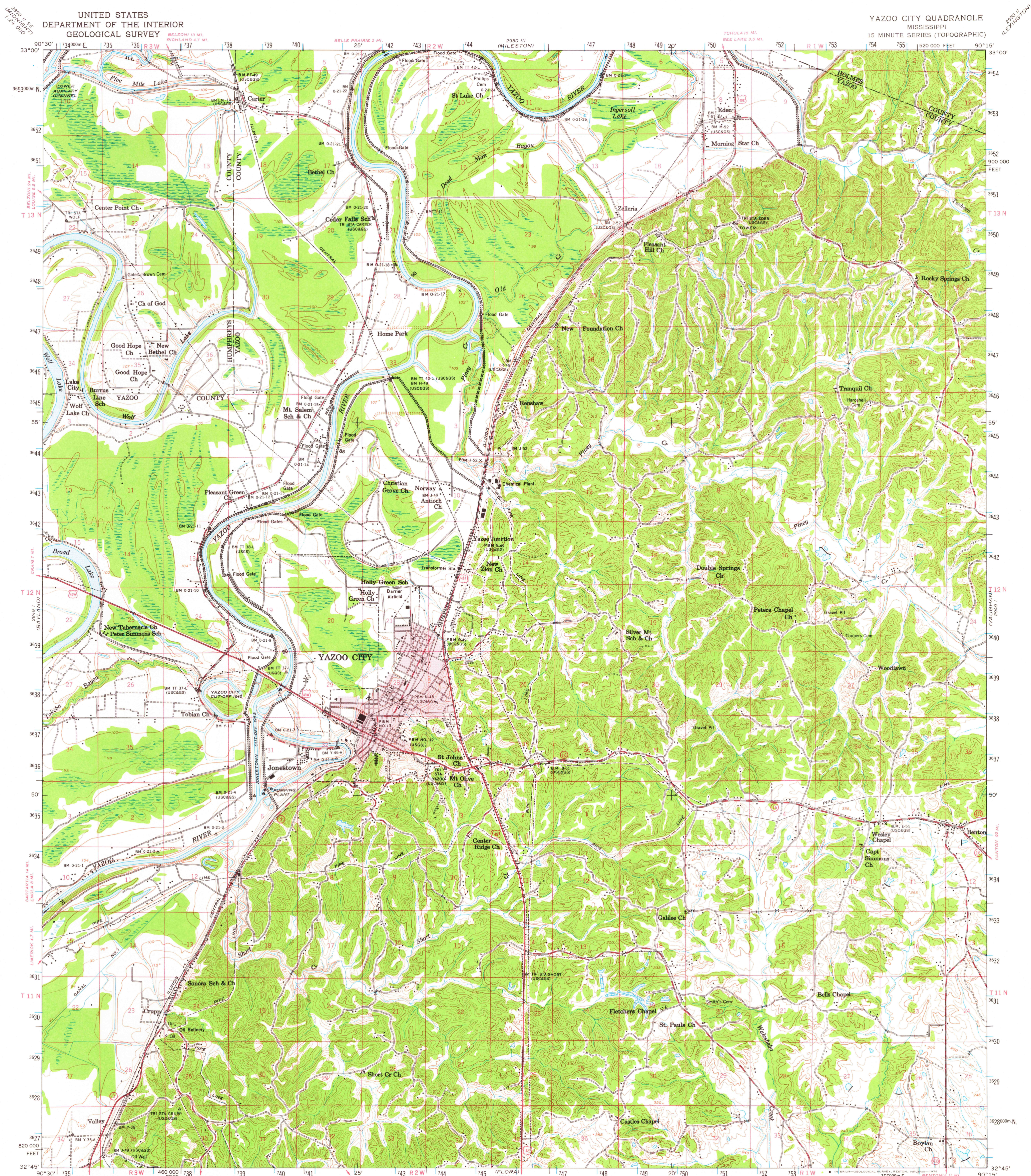
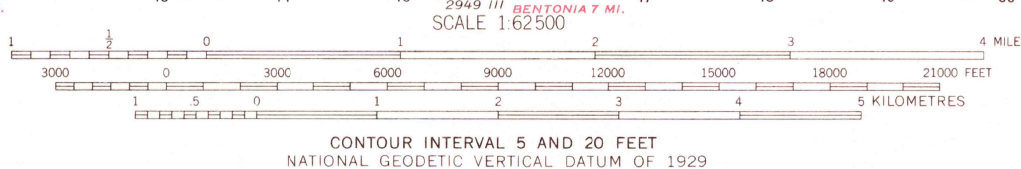


UNITED STATES
DEPARTMENT OF THE INTERIOR
GEOLOGICAL SURVEY

YAZOO CITY QUADRANGLE
MISSISSIPPI
15 MINUTE SERIES (TOPOGRAPHIC)



Maped and edited by the Mississippi River Commission
Published by the Geological Survey
Control by USGS, USC&GS, USCE, and MRC
Topography by photogrammetric methods from aerial photographs
taken 1959-1960. Field checked 1961
Polyconic projection. 1927 North American datum
10,000-foot grid based on Mississippi coordinate system, west zone
1000-metre Universal Transverse Mercator grid ticks, zone 15,
shown in blue
Red tint indicates area in which only landmark buildings are shown



ROAD CLASSIFICATION
Heavy-duty ——— Light-duty ———
Medium-duty ——— Unimproved dirt ———
U.S. Route ——— State Route ———
5 ft. 20 ft. contours
QUADRANGLE LOCATION
SEP 09 1976
YAZOO CITY, MISS.
(FORMERLY VALLEY)
N3245-W9015/15
1961
AMS 2949 IV-SERIES V743

FOR SALE BY U.S. GEOLOGICAL SURVEY, RESTON, VIRGINIA 22092
AND MISSISSIPPI RIVER COMMISSION, VICKSBURG, MISSISSIPPI 39180
A FOLDER DESCRIBING TOPOGRAPHIC MAPS AND SYMBOIS IS AVAILABLE ON REQUEST