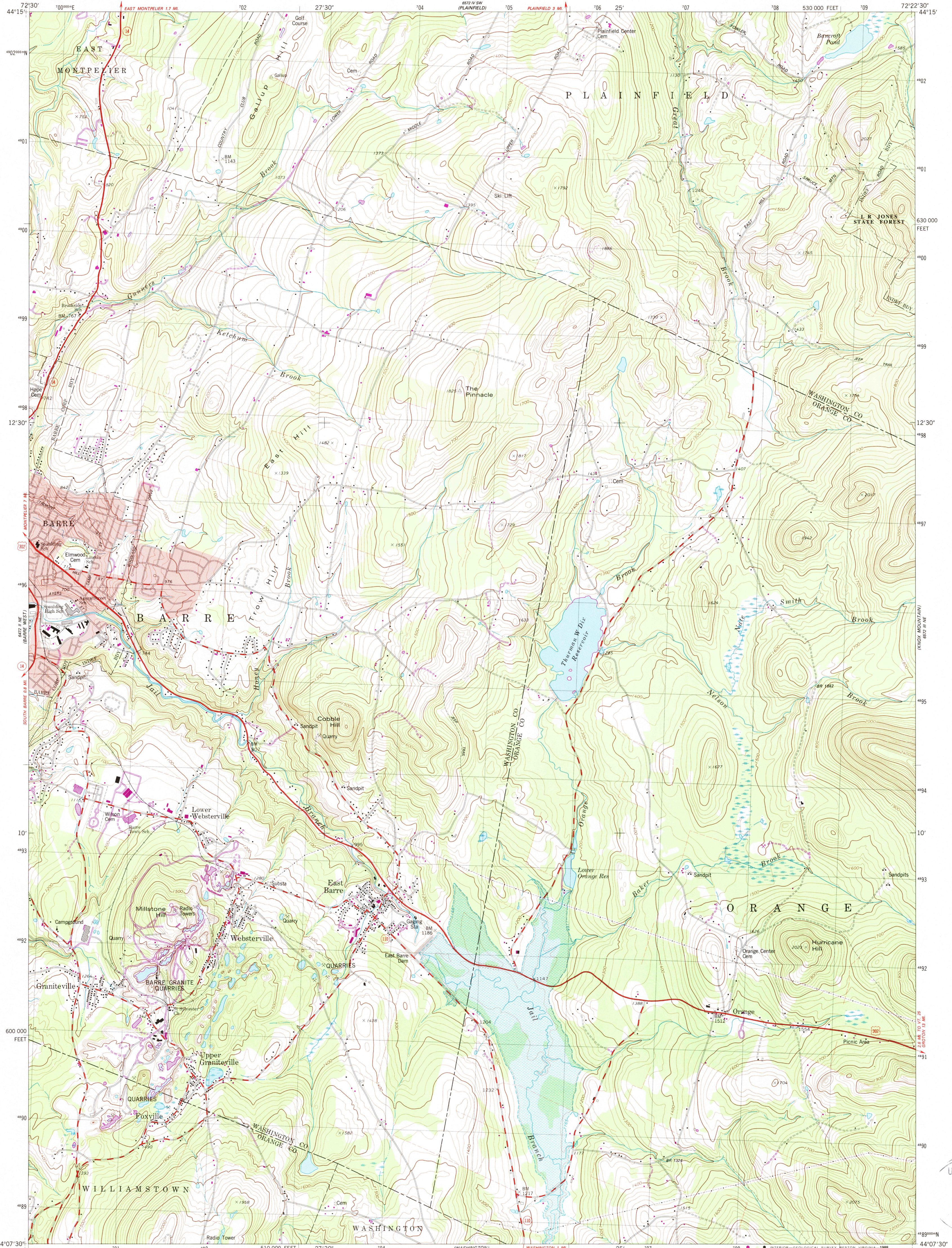
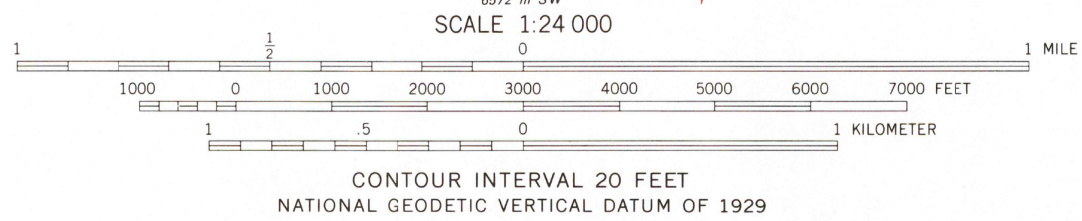
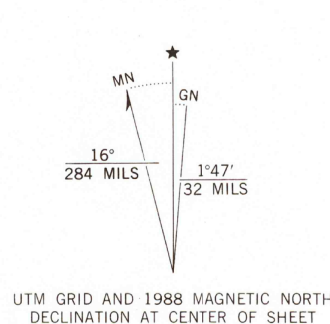


UNITED STATES  
DEPARTMENT OF THE INTERIOR  
GEOLOGICAL SURVEY

BARRE EAST QUADRANGLE  
VERMONT  
7.5 MINUTE SERIES (TOPOGRAPHIC)  
NW/4 EAST BARRE 15' QUADRANGLE



Mapped, edited, and published by the Geological Survey  
Control by USGS and NOS/NOAA  
Topography by photogrammetric methods from aerial photographs taken 1976. Field checked 1976. Map edited 1981  
Projection and 10,000-foot grid ticks: Vermont coordinate system (transverse Mercator)  
1000-meter Universal Transverse Mercator grid, zone 18  
1927 North American Datum  
To place on the predicted North American Datum 1983 move the projection lines 2 meters south and 37 meters west as shown by dashed corner ticks  
Area covered by dashed light-blue pattern is subject to controlled inundation  
Fine red dashed lines indicate selected fence and field lines where generally visible on aerial photographs. This information is unchecked  
There may be private inholdings within the boundaries of the National or State reservations shown on this map  
Red tint indicates area in which only landmark buildings are shown



THIS MAP COMPLIES WITH NATIONAL MAP ACCURACY STANDARDS  
FOR SALE BY U.S. GEOLOGICAL SURVEY  
DENVER, COLORADO 80225 OR RESTON, VIRGINIA 22092  
A FOLDER DESCRIBING TOPOGRAPHIC MAPS AND SYMBOLS IS AVAILABLE ON REQUEST

Revisions shown in purple and woodland compiled from aerial photographs taken 1983 and other sources  
This information not field checked. Map edited 1988

ROAD CLASSIFICATION  
Primary highway, hard surface  
Secondary highway, hard surface  
Light duty road, hard or improved surface  
Unimproved road  
Interstate Route  
U. S. Route  
State Route

BARRE EAST, VT.  
NW/4 EAST BARRE 15' QUADRANGLE  
44072-B4-TF-024

1981  
PHOTOREVISED 1988  
DMA 6572 III NW - SERIES V813

USGS NMD HISTORICAL MAP

JUL 31 1989

REC'D FILE COPY