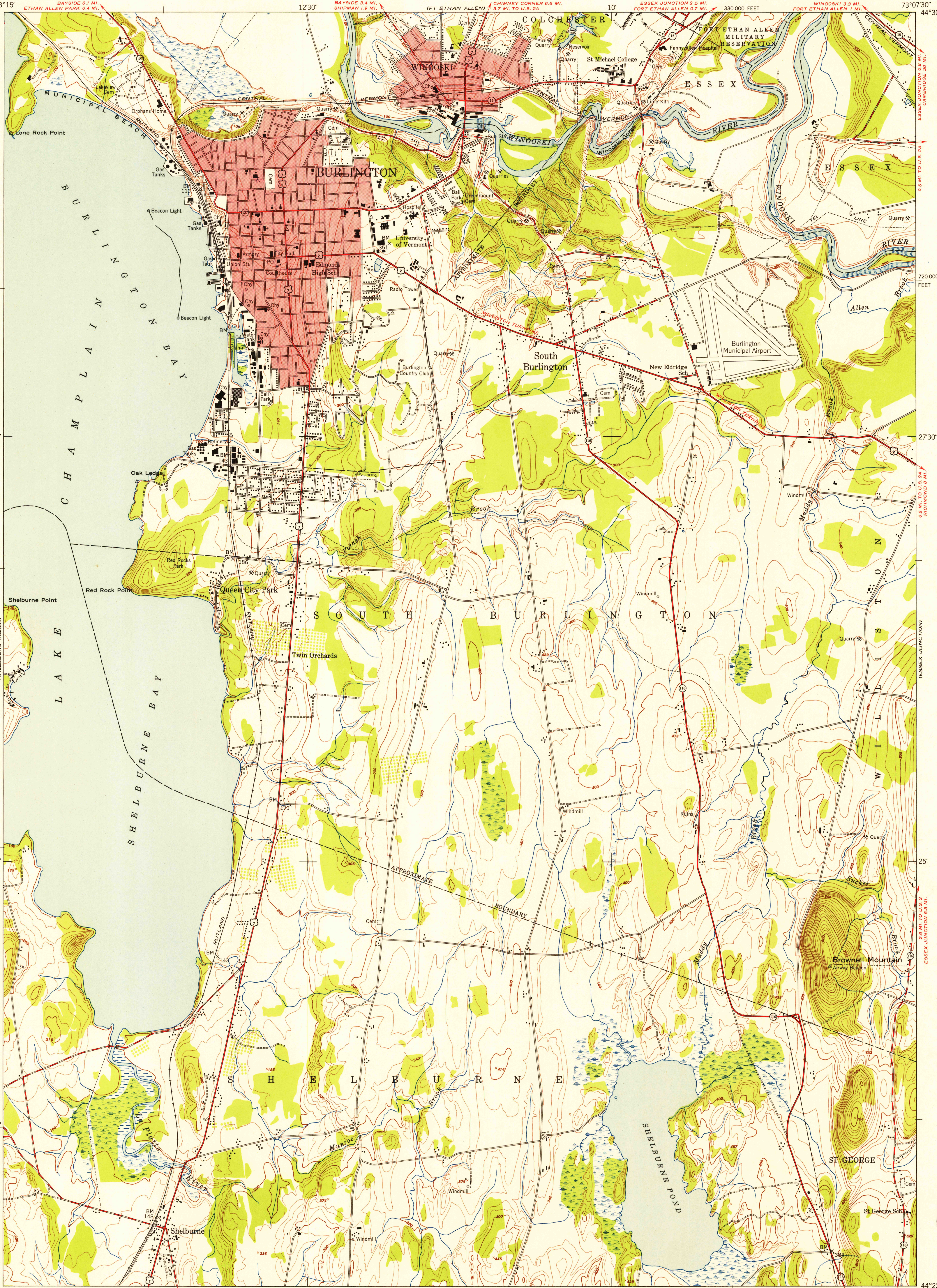


U.S.G.S.  
FILE COPY  
Inspection and Editing

U.S.G.S.  
FILE COPY  
Inspection and Editing

HISTORICAL

HISTORICAL



Mapped by the Army Map Service  
Published for civil use by the Geological Survey  
Control by USGS, USC&GS, and USCE  
Topography from aerial photographs by multiplex methods  
Aerial photographs taken 1947. Field check 1948  
Polyconic projection. 1927 North American datum  
10,000-foot grid based on Vermont coordinate system  
Red tint indicates area in which only  
landmark buildings are shown  
No distinction is made between barns, dwellings,  
commercial and industrial buildings  
Unchecked elevations are shown in brown

APPROXIMATE MEAN  
DECLINATION, 1948

SCALE 1:24,000  
1 0 1000 2000 3000 4000 5000 6000 7000 FEET  
1 5 0 5 10 KILOMETER  
CONTOUR INTERVAL 20 FEET  
DATUM IS MEAN SEA LEVEL

USGS  
Historical File  
Topographic Division

ROAD CLASSIFICATION  
Heavy-duty 2 LANE 16 LANE Light-duty  
Medium-duty 2 LANE 16 LANE Unimproved dirt  
U. S. Route State Route

BURLINGTON, VT.  
NW/4 BURLINGTON 15' QUADRANGLE  
N4422.5-W7307.5/7.5

1948

DEC 10 1953

3220