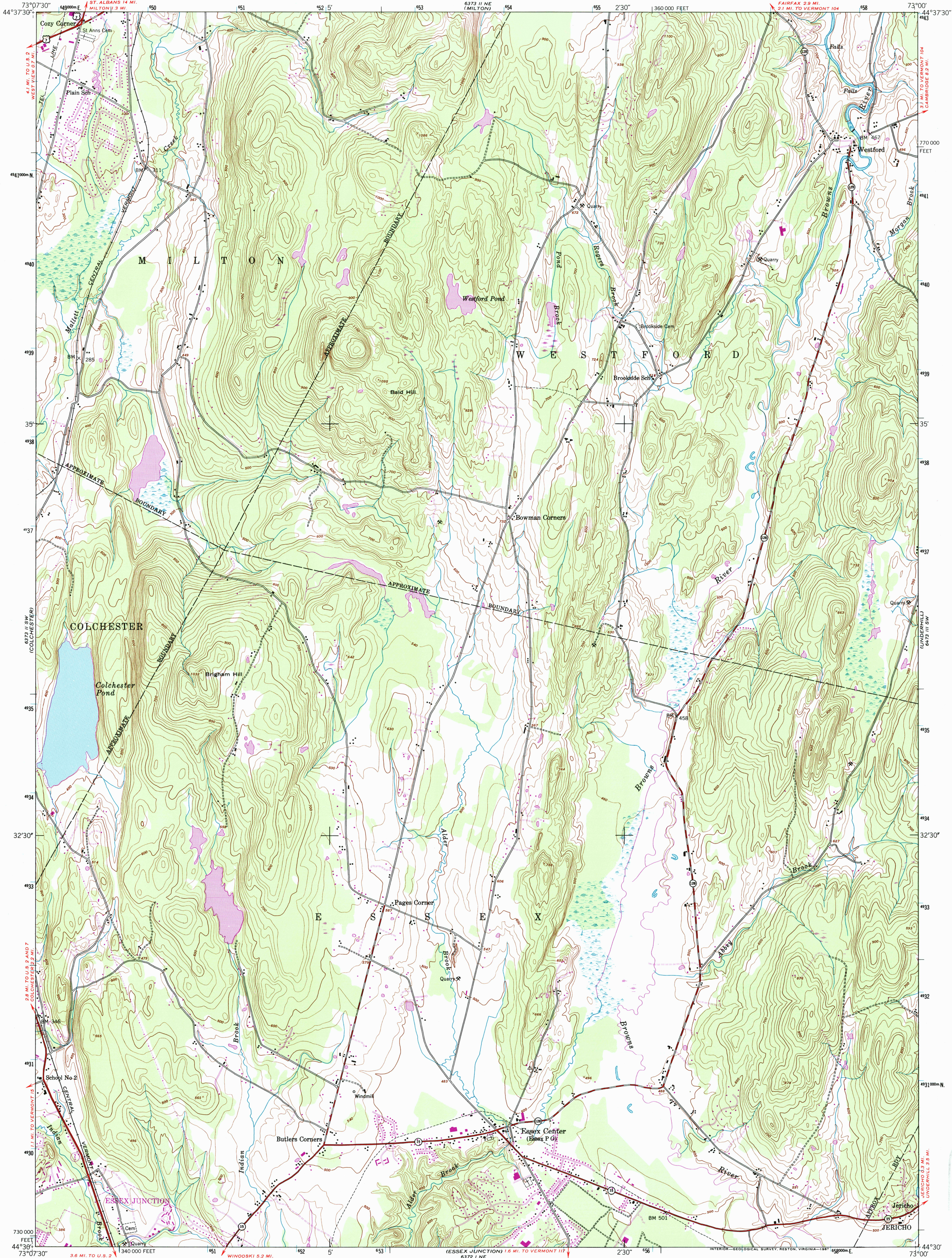


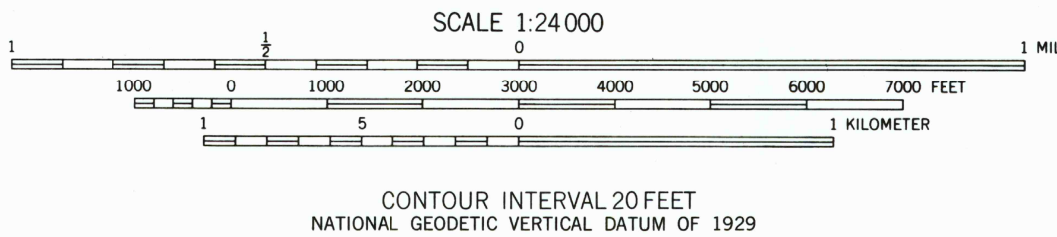
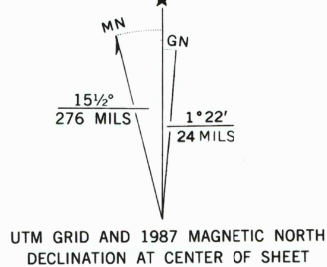
UNITED STATES
DEPARTMENT OF THE INTERIOR
GEOLOGICAL SURVEY

UNITED STATES
DEPARTMENT OF THE ARMY
CORPS OF ENGINEERS

ESSEX CENTER QUADRANGLE
VERMONT-CHITTENDEN CO.
7.5 MINUTE SERIES (TOPOGRAPHIC)
SE/4 MILTON 15' QUADRANGLE



Maped by the Army Map Service
Published for civil use by the Geological Survey
Control by USGS, USC&GS, and USCE
Topography from aerial photographs by multiplex methods
Aerial photographs taken 1947. Field check 1948
Polyconic projection. 1927 North American datum
10,000-foot grid based on Vermont coordinate system
1000-meter Universal Transverse Mercator grid ticks,
zone 18, shown in blue
To place on the predicted North American Datum 1983
move the projection lines 2 meters south and
34 meters west as shown by dashed corner ticks
No distinction is made between barns, dwellings,
commercial, and industrial buildings



THIS MAP COMPLIES WITH NATIONAL MAP ACCURACY STANDARDS
FOR SALE BY U. S. GEOLOGICAL SURVEY
DENVER, COLORADO 80225 OR RESTON, VIRGINIA 22092
A FOLDER DESCRIBING TOPOGRAPHIC MAPS AND SYMBOLS IS AVAILABLE ON REQUEST

Revisions shown in purple and woodland compiled by
the Geological Survey from aerial photographs
taken 1983 and other sources. This information not field checked
Map edited 1987

ROAD CLASSIFICATION
Heavy-duty 4 LANE 16 LANE Light-duty
Medium-duty 4 LANE 16 LANE Unimproved dirt
U. S. Route State Route



QUADRANGLE LOCATION

ESSEX CENTER, VT. 12
SE/4 MILTON 15' QUADRANGLE
44073-E1-TF-024

1948
PHOTOREVISED 1987
DMA 6373 II SE-SERIES V813

