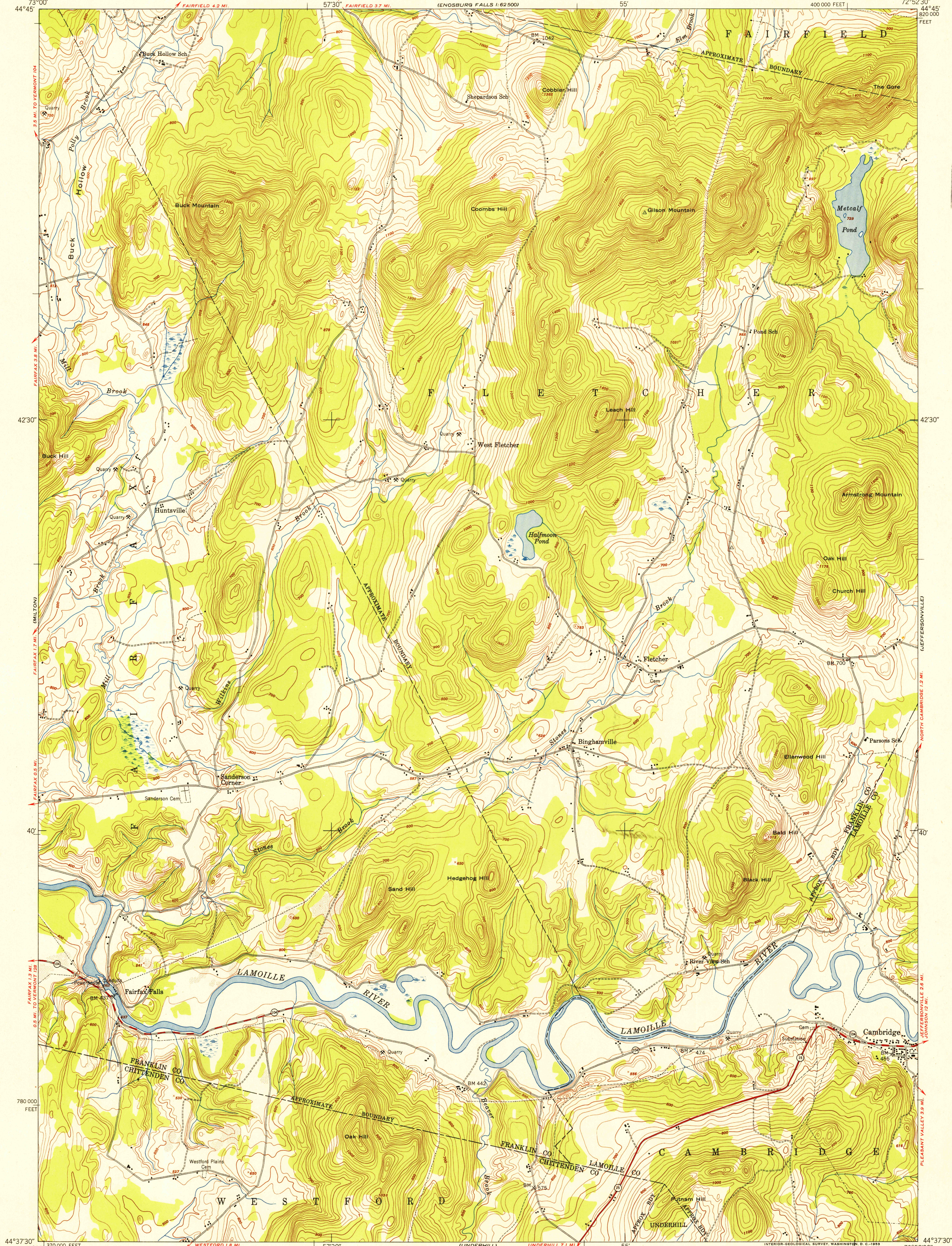


U.S.G.S.  
FILE COPY  
Inspection and Editing

HISTORICAL  
U.S.G.S.  
FILE COPY  
Inspection and Editing

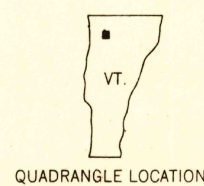


Map by the Army Map Service  
Published for civil use by the Geological Survey  
Control by USGS, USC&GS, and USCE  
Topography from aerial photographs by multiplex methods  
Aerial photographs taken 1947. Field check 1948  
Polyconic projection. 1927 North American datum  
10,000-foot grid based on Vermont coordinate system  
No distinction is made between barns, dwellings,  
commercial and industrial buildings  
Unchecked elevations are shown in brown

16°  
TRUE NORTH  
APPROXIMATE MEAN  
DECLINATION, 1948

SCALE 1:24000  
1 0 1000 2000 3000 4000 5000 6000 7000 FEET  
1 5 0 1 KILOMETER  
CONTOUR INTERVAL 20 FEET  
DATUM IS MEAN SEA LEVEL

USGS  
Historical File  
Topographic Division



ROAD CLASSIFICATION  
Heavy-duty 4 LANE 16 LANE Light-duty  
Medium-duty 4 LANE 16 LANE Unimproved dirt  
U. S. Route State Route

GILSON MOUNTAIN, VT.  
NW 1/4 MOUNT MANSFIELD 15' QUADRANGLE  
N4437.5-W7252.5/7.5

1948

THIS MAP COMPLIES WITH NATIONAL MAP ACCURACY STANDARDS  
FOR SALE BY U. S. GEOLOGICAL SURVEY, WASHINGTON 25, D. C.  
A FOLDER DESCRIBING TOPOGRAPHIC MAPS AND SYMBOLS IS AVAILABLE ON REQUEST

DEC 16 1953

2600