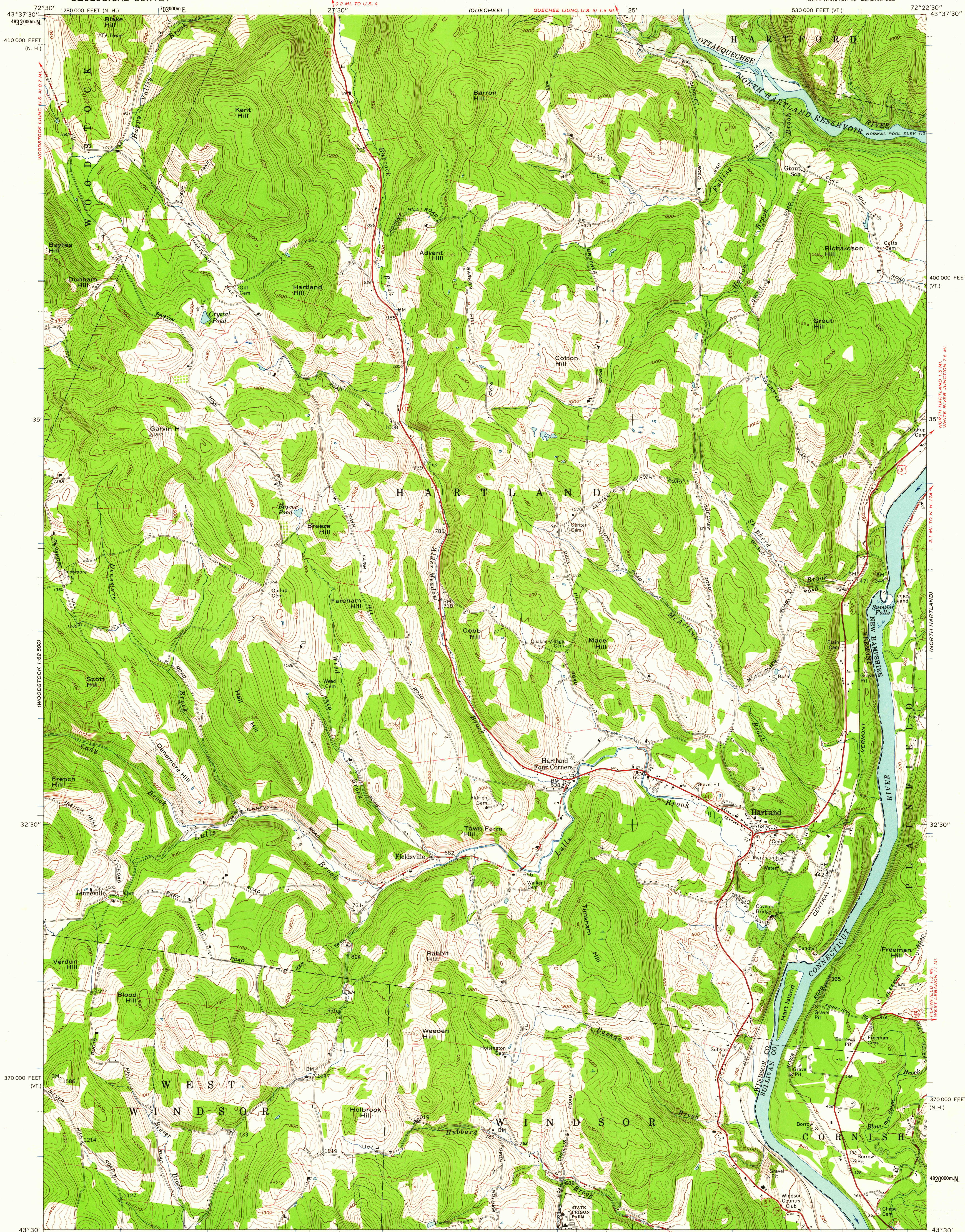
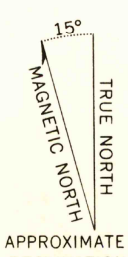


UNITED STATES  
DEPARTMENT OF THE INTERIOR  
GEOLOGICAL SURVEY

HARTLAND QUADRANGLE  
VERMONT-NEW HAMPSHIRE  
7.5 MINUTE SERIES (TOPOGRAPHIC)  
SW/4 HANOVER 15' QUADRANGLE



Mapped, edited, and published by the Geological Survey  
Control by USGS and USC&GS  
Topography from aerial photographs by photogrammetric methods  
Aerial photographs taken 1956. Field check 1959  
Polyconic projection. 1927 North American datum  
10,000-foot grids based on Vermont and New Hampshire  
coordinate systems  
1000-meter Universal Transverse Mercator grid ticks,  
zone 18, shown in blue  
Fine red dashed lines indicate selected fence and field lines where  
generally visible on aerial photographs. This information is unchecked  
Area covered by dashed light-blue pattern is subject to  
controlled inundation to 567 feet



THIS MAP COMPLIES WITH NATIONAL MAP ACCURACY STANDARDS  
FOR SALE BY U. S. GEOLOGICAL SURVEY, WASHINGTON 25, D. C.  
A FOLDER DESCRIBING TOPOGRAPHIC MAPS AND SYMBOLS IS AVAILABLE ON REQUEST

USGS  
Historical File  
Topographic Division

ROAD CLASSIFICATION	
Heavy-duty	Light-duty
Medium-duty	Unimproved dirt
U. S. Route	State Route

HARTLAND, VT.—N. H.  
SW/4 HANOVER 15' QUADRANGLE  
N4330—W7222.5/7.5

1959

U.S.G.S.  
FILE COPY  
TOPOGRAPHIC DIVISION

HISTORICAL  
APR - 3 1961

3000