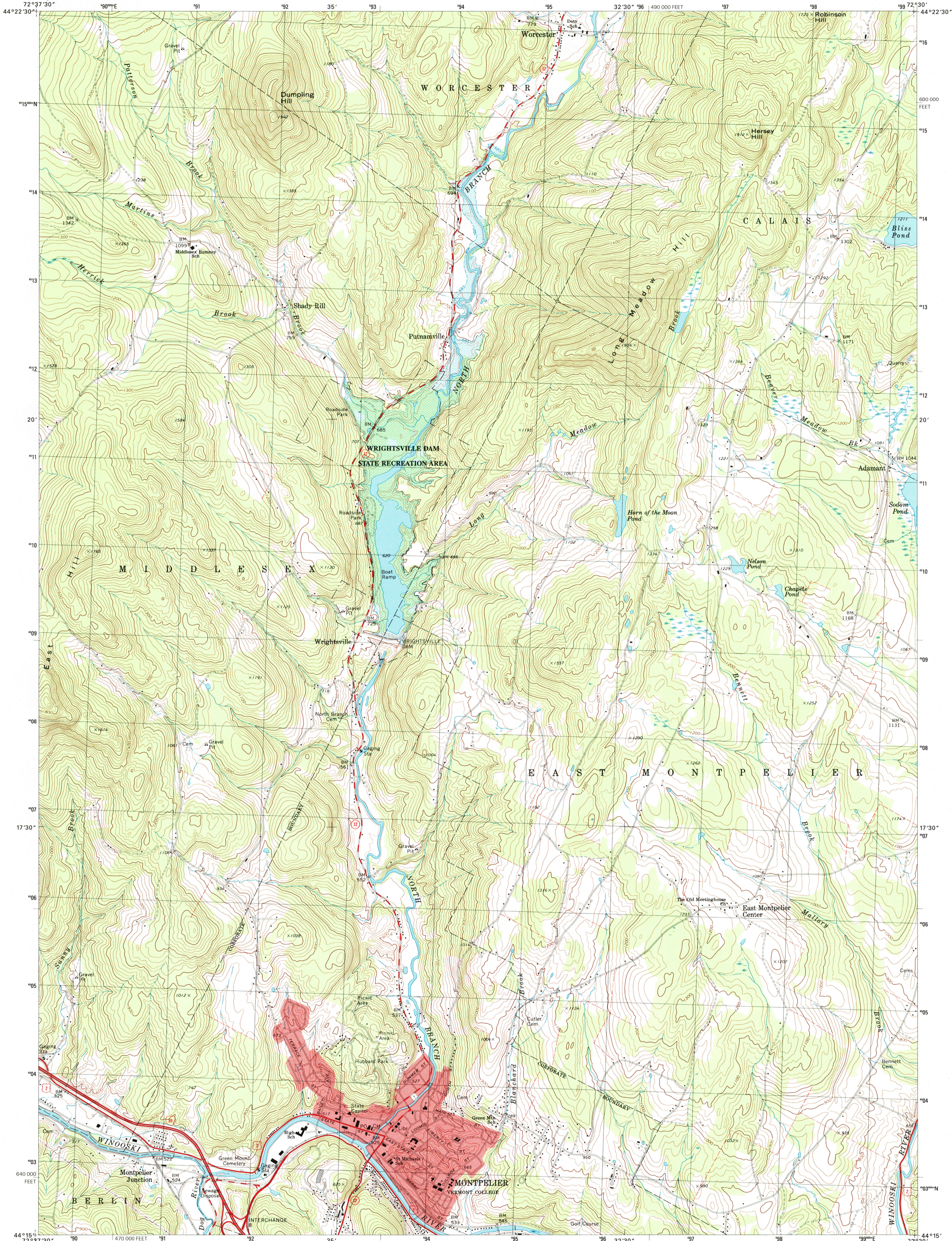




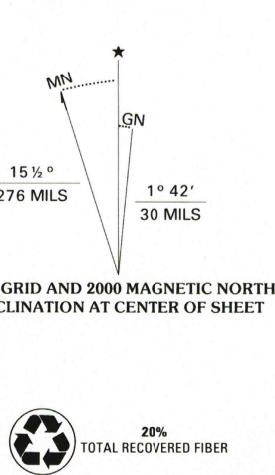
U.S. DEPARTMENT OF THE INTERIOR  
U.S. GEOLOGICAL SURVEY

STATE OF VERMONT  
VERMONT AGENCY OF ENVIRONMENTAL CONSERVATION

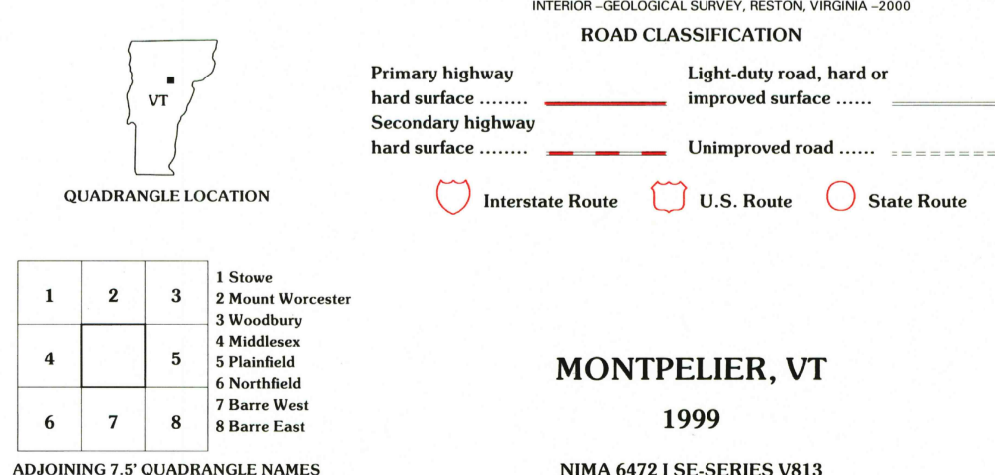
MONTPELIER QUADRANGLE  
VERMONT-WASHINGTON CO.  
7.5-MINUTE SERIES (TOPOGRAPHIC)



Produced by the United States Geological Survey  
Derived from imagery taken 1966 and other sources. Photocollated using imagery taken 1999; no major culture or drainage changes observed. Survey control current as of 1968. Boundaries, other than corporate, revised 2000.  
North American Datum of 1927 (NAD 27). Projection and 10 000-foot ticks: Vermont coordinate system (transverse Mercator).  
1000-meter Universal Transverse Mercator grid, zone 18.  
North American Datum of 1983 (NAD 83) is shown by dashed corner ticks. The values of the shift between NAD 27 and NAD 83 for 7.5-minute intersections are obtainable from National Geographic Survey NADCON software.  
Areas covered by dashed light blue pattern are subject to controlled inundation.  
There may be private inholdings within the boundaries of the National or State reservations shown on this map.



SCALE 1:24 000  
KILOMETERS  
METERS  
MILES  
FEET  
CONTOUR INTERVAL 20 FEET  
NATIONAL GEODETIC DATUM OF 1929  
TO CONVERT FROM FEET TO METERS, MULTIPLY BY 0.3048  
THIS MAP COMPLIES WITH NATIONAL MAP ACCURACY STANDARDS  
FOR SALE BY U.S. GEOLOGICAL SURVEY, P.O. BOX 25286, DENVER, COLORADO 80225  
A FOLDER DESCRIBING TOPOGRAPHIC MAPS AND SYMBOLS IS AVAILABLE ON REQUEST



RECEIVED  
SEP 30 2000  
USGS NAD  
HISTORICAL MAP ARCHIVES

