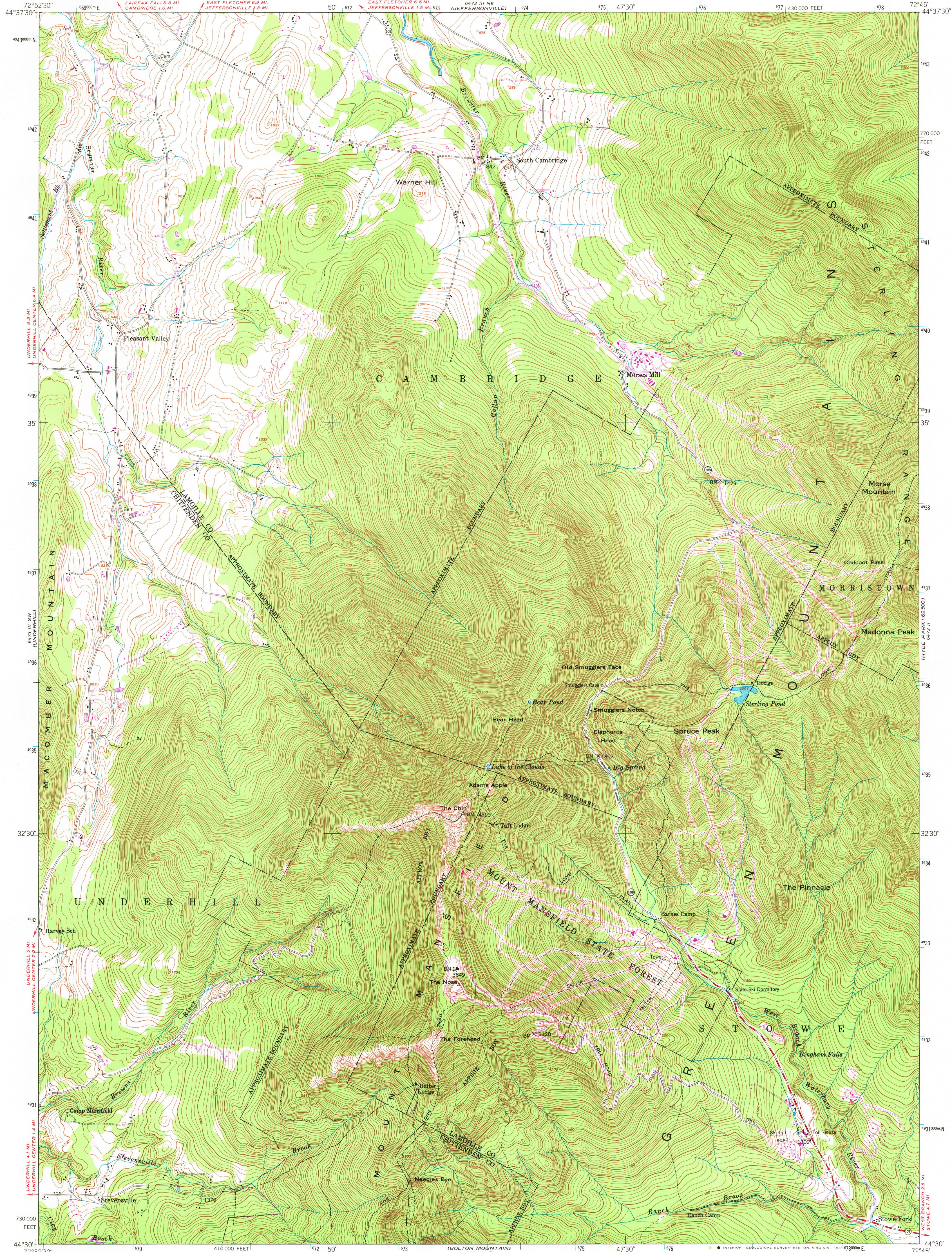


UNITED STATES
DEPARTMENT OF THE INTERIOR
GEOLOGICAL SURVEY

UNITED STATES
DEPARTMENT OF THE ARMY
CORPS OF ENGINEERS

MOUNT MANSFIELD QUADRANGLE
VERMONT
7.5 MINUTE SERIES (TOPOGRAPHIC)
SE/4 MOUNT MANSFIELD 15' QUADRANGLE



Maped by the Defense Mapping Agency
Published for civil use by the Geological Survey
Control by USGS, NOS/NOAA, and USCE
Topography by photogrammetric methods from
aerial photographs taken 1947. Field checked 1948
Polyconic projection. 10,000-foot grid ticks based on Vermont coordinate
system. 1000-meter Universal Transverse Mercator grid ticks,
zone 18, shown in blue 1927 North American Datum. To place on the
predicted North American Datum 1983 move the projection lines
2 meters south and 35 meters west as shown by dashed corner ticks
No distinction is made between dwellings, barns,
commercial and industrial buildings
The Long Trail shown in approximate location
There may be private inholdings within the boundaries
of the National or State reservations shown on this map

Revisions shown in purple compiled by the Geological Survey
from photographs taken 1978. This information not
field checked. Map edited 1980

THIS MAP COMPLIES WITH NATIONAL MAP ACCURACY STANDARDS
FOR SALE BY U.S. GEOLOGICAL SURVEY, RESTON, VIRGINIA 22092
A FOLDER DESCRIBING TOPOGRAPHIC MAPS AND SYMBOLS IS AVAILABLE ON REQUEST

ROAD CLASSIFICATION
Heavy-duty 4 LANE 16 LANE Light-duty
Medium-duty 4 LANE 16 LANE Unimproved dirt
U.S. Route State Route

MOUNT MANSFIELD, VT.
SE/4 MOUNT MANSFIELD 15' QUADRANGLE
N4430-W7245/7.5
1948
PHOTOREVISED 1980
DMA 6473 III SE-SERIES V813

2600
MAY 28 1981
USGS
HISTORICAL FILE
NATIONAL MAP DIVISION