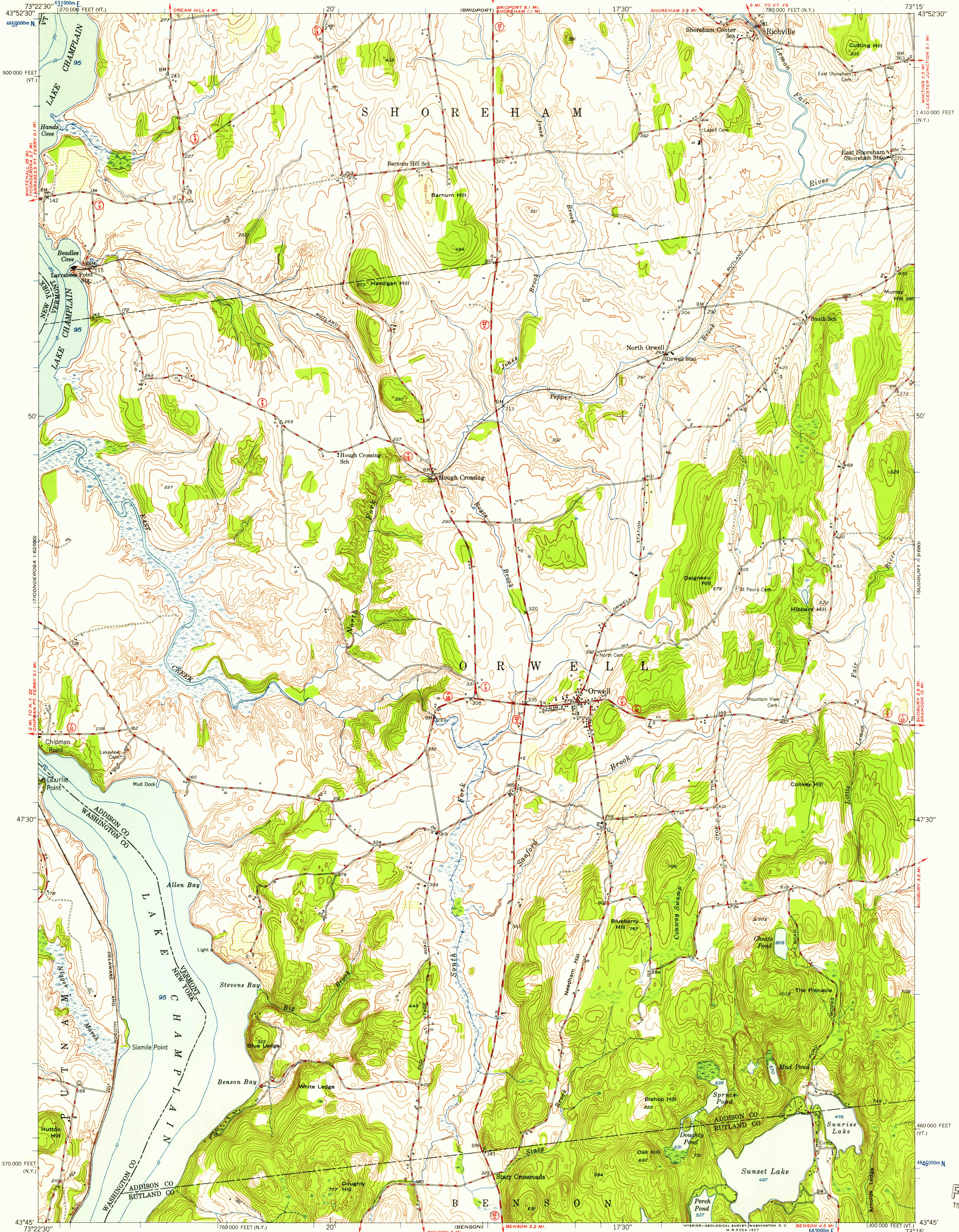


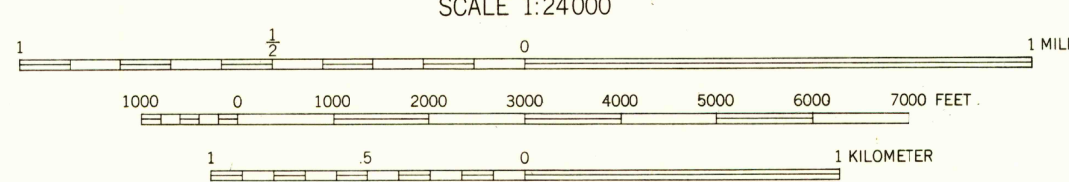
UNITED STATES
DEPARTMENT OF THE INTERIOR
GEOLOGICAL SURVEY

ORWELL QUADRANGLE
VERMONT-NEW YORK
7.5 MINUTE SERIES (TOPOGRAPHIC)
SE/4 TICONDEROGA 15' QUADRANGLE



Mapped, edited, and published by the Geological Survey
Control by USGS and USC&GS
Culture and drainage in part compiled from
aerial photographs taken 1942
Topography by plane-table methods 1949
Hydrography in Lake Champlain by U. S. Lake Survey 1947
Polyconic projection. 1927 North American datum
10,000-foot grids based on Vermont coordinate system,
and New York coordinate system, east zone
1000-meter Universal Transverse Mercator grid ticks,
zone 18, shown in blue

TRUE NORTH
MAGNETIC NORTH
APPROXIMATE MEAN
DECLINATION, 1949



CONTOUR INTERVAL 20 FEET
DATUM IS MEAN SEA LEVEL
DEPTH CURVES IN FEET-DATUM IS MEAN LOW LAKE LEVEL, 92.5 FEET

THIS MAP COMPLIES WITH NATIONAL MAP ACCURACY STANDARDS
FOR SALE BY U. S. GEOLOGICAL SURVEY, WASHINGTON 25, D. C.
A FOLDER DESCRIBING TOPOGRAPHIC MAPS AND SYMBOLS IS AVAILABLE ON REQUEST

USGS
Historical File
Topographic Division

ROAD CLASSIFICATION
HARD-SURFACE ALL WEATHER ROADS DRY WEATHER ROADS
Heavy-duty 4 LANE 16 LANE Improved dirt
Medium-duty 4 LANE 16 LANE Unimproved dirt
Loose-surface, graded, or narrow hard-surface
U. S. Route State Route

ORWELL, VT.-N. Y.
SE/4 TICONDEROGA 15' QUADRANGLE
N4345-W7315/7.5

1949

U.S.G.S.
FILE COPY
TOPOGRAPHIC DIVISION

JUL - 2 1994

2605