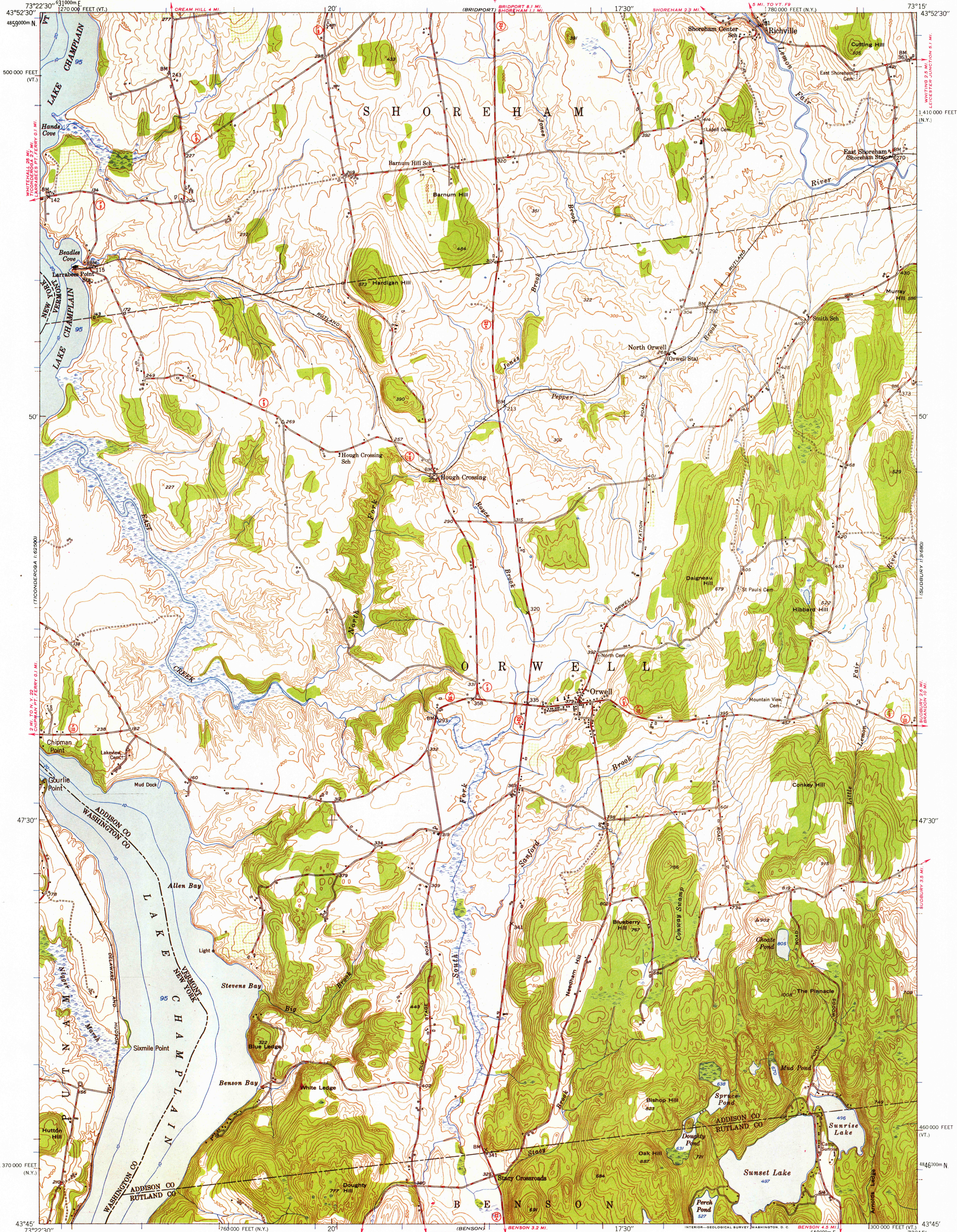


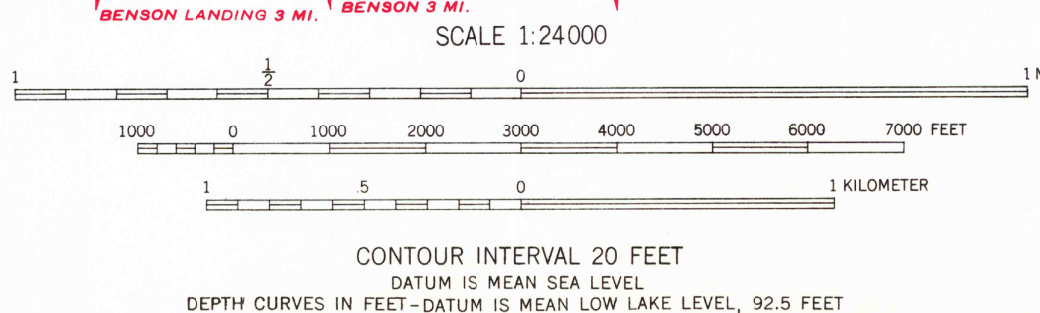
UNITED STATES
DEPARTMENT OF THE INTERIOR
GEOLOGICAL SURVEY

ORWELL QUADRANGLE
VERMONT-NEW YORK
7.5 MINUTE SERIES (TOPOGRAPHIC)
SE/4 TICONDEROGA 15' QUADRANGLE



Mapped, edited, and published by the Geological Survey
Control by USGS and USC&GS
Culture and drainage in part compiled from
aerial photographs taken 1942
Topography by plane-table methods 1949
Hydrography in Lake Champlain by U.S. Lake Survey 1947
Polyconic projection. 1927 North American datum
10,000-foot grids based on Vermont coordinate system,
and New York coordinate system, east zone
1000-meter Universal Transverse Mercator grid ticks,
zone 18, shown in blue

TRUE NORTH
MAGNETIC NORTH
APPROXIMATE MEAN
DECLINATION, 1949



ROAD CLASSIFICATION
HARD-SURFACE ALL WEATHER ROADS DRY WEATHER ROADS
Heavy-duty ——— 4 LANE 1 LANE Improved dirt ———
Medium-duty ——— 4 LANE 1 LANE Unimproved dirt ———
Loose-surface, graded, or narrow hard-surface ———
U. S. Route State Route

THIS MAP COMPLIES WITH NATIONAL MAP ACCURACY STANDARDS
FOR SALE BY U. S. GEOLOGICAL SURVEY, WASHINGTON 25, D. C.
A FOLDER DESCRIBING TOPOGRAPHIC MAPS AND SYMBOLS IS AVAILABLE ON REQUEST

ORWELL, VT.-N. Y.
SE/4 TICONDEROGA 15' QUADRANGLE
N4345-W7315/7.5

1949

1820
OCT 6 1975