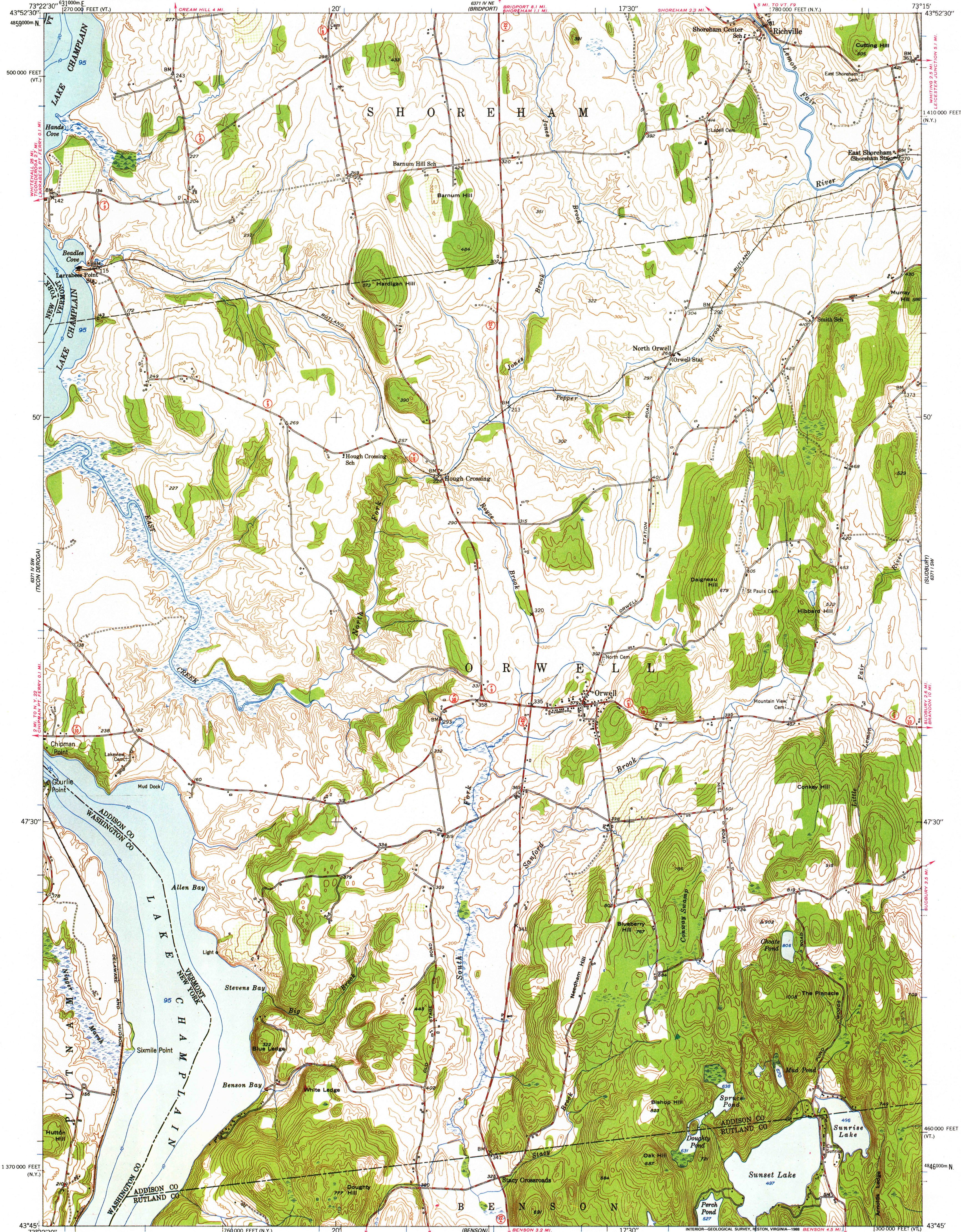


UNITED STATES
DEPARTMENT OF THE INTERIOR
GEOLOGICAL SURVEY

ORWELL QUADRANGLE
VERMONT-NEW YORK
7.5 MINUTE SERIES (TOPOGRAPHIC)
SE/4 TICONDEROGA 15' QUADRANGLE
SE/4 TICONDEROGA 15' QUADRANGLE

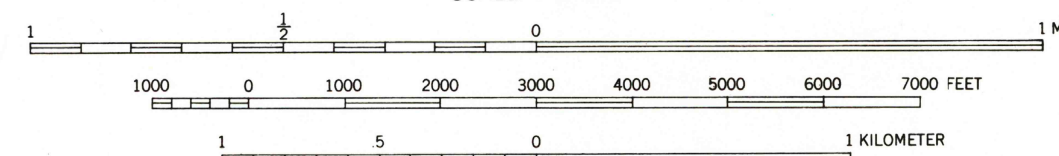
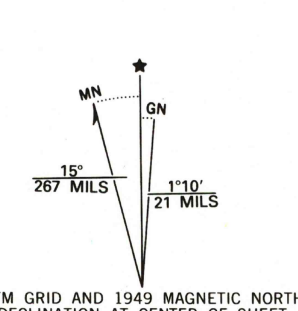


Mapped, edited, and published by the Geological Survey
Control by USGS and USC&GS

Culture and drainage in part compiled from
aerial photographs taken 1942
Topography by plane-table methods 1949
Hydrography in Lake Champlain by U. S. Lake Survey 1947

Polyconic projection. 1927 North American datum
10,000-foot grids based on Vermont coordinate system,
and New York coordinate system, east zone
1000-meter Universal Transverse Mercator grid ticks,
zone 18, shown in blue

To place on the predicted North American Datum 1983,
move the projection lines 3 meters south and
35 meters west as shown by dashed corner ticks



CONTOUR INTERVAL 20 FEET
NATIONAL GEODETIC VERTICAL DATUM OF 1929
DEPTH CURVES IN FEET-DATUM IS MEAN LOW LAKE LEVEL, 92.5 FEET

THIS MAP COMPLIES WITH NATIONAL MAP ACCURACY STANDARDS
FOR SALE BY U. S. GEOLOGICAL SURVEY
DENVER, COLORADO 80225, OR RESTON, VIRGINIA 22092
A FOLDER DESCRIBING TOPOGRAPHIC MAPS AND SYMBOLS IS AVAILABLE ON REQUEST



ROAD CLASSIFICATION
HARD-SURFACE ALL WEATHER ROADS DRY WEATHER ROADS
Heavy-duty 4 LANE 6 LANE Improved dirt
Medium-duty 4 LANE 6 LANE Unimproved dirt
Loose-surface, graded, or narrow hard-surface
U. S. Route State Route

ORWELL, VT.-N. Y.
SE/4 TICONDEROGA 15' QUADRANGLE
43073-G3-TF-024
1949

DMA 6371 IV SE-SERIES V813

USGS NMD HISTORICAL MAP
DEC 09 1988
REC'D FILE COPY