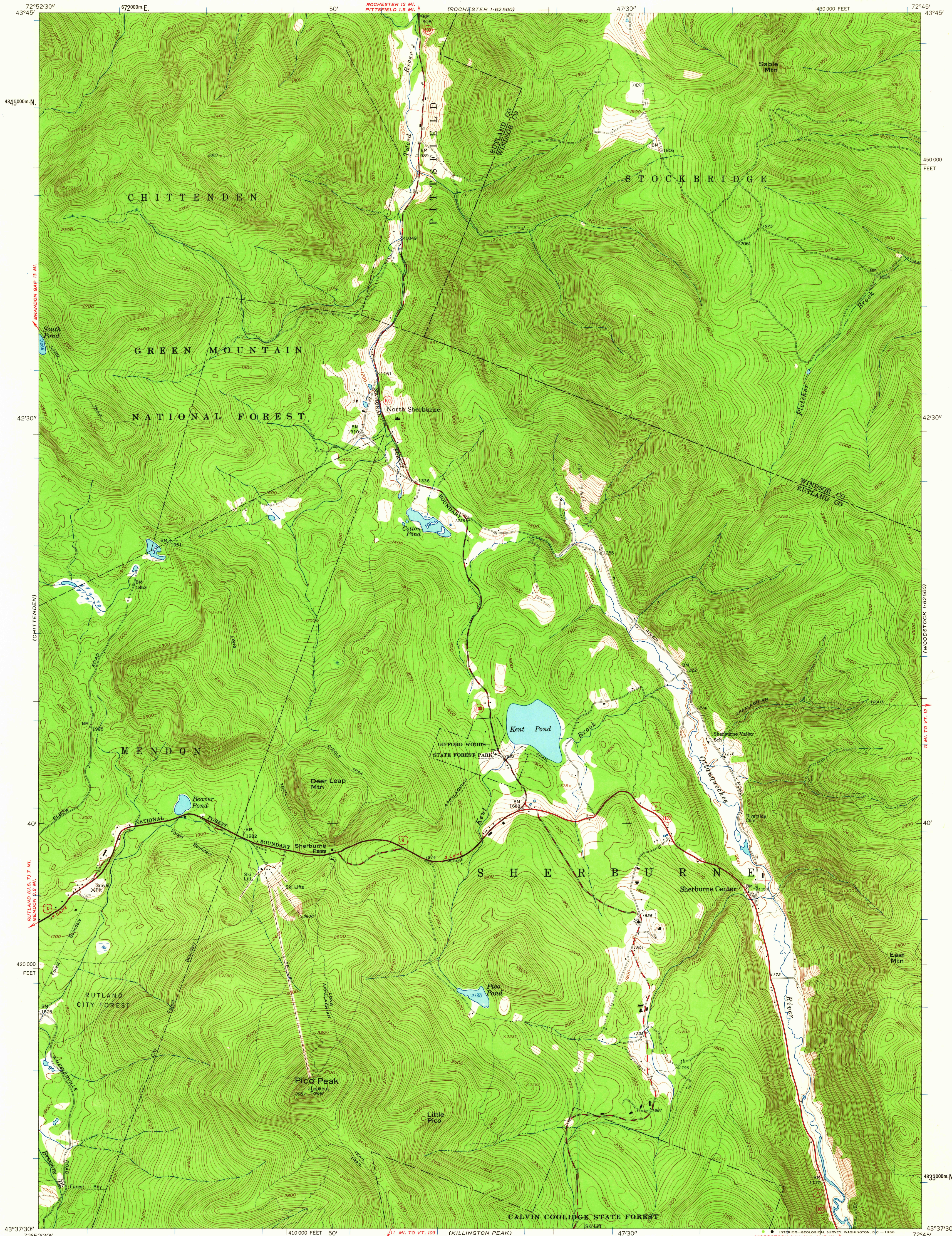


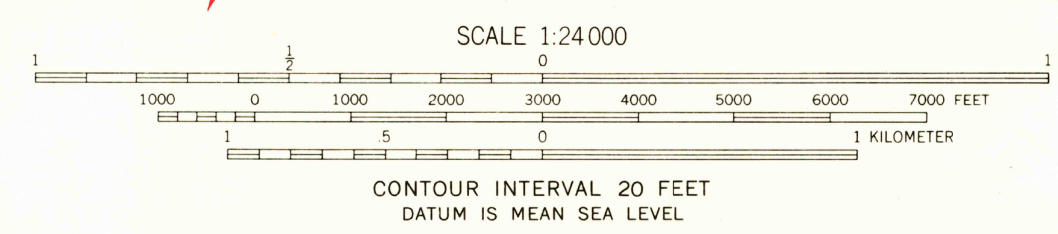
UNITED STATES
DEPARTMENT OF THE INTERIOR
GEOLOGICAL SURVEY

PICO PEAK QUADRANGLE
VERMONT
7.5 MINUTE SERIES (TOPOGRAPHIC)
NE 1/4 RUTLAND 15' QUADRANGLE



Mapped, edited, and published by the Geological Survey
Control by USGS and USC&GS
Topography by photogrammetric methods from aerial photographs
taken 1957. Field checked 1961
Polyconic projection. 1927 North American datum
10,000-foot grid based on Vermont coordinate system
1000-meter Universal Transverse Mercator grid ticks,
zone 18, shown in blue
Fine red dashed lines indicate selected fence and field lines where
generally visible on aerial photographs. This information is unchecked

APPROXIMATE MEAN
DECLINATION, 1961



THIS MAP COMPLIES WITH NATIONAL MAP ACCURACY STANDARDS
FOR SALE BY U. S. GEOLOGICAL SURVEY, WASHINGTON 25, D. C.
A FOLDER DESCRIBING TOPOGRAPHIC MAPS AND SYMBOLS IS AVAILABLE ON REQUEST

USGS
Historical File
Topographic Division



ROAD CLASSIFICATION
Heavy-duty ——— Light-duty ———
Medium-duty ——— Unimproved dirt ———
U. S. Route ——— State Route ———

U.S.G.S.
FILE COPY
TOPOGRAPHIC DIVISION

PICO PEAK, VT.
NE 1/4 RUTLAND 15' QUADRANGLE
N 4337.5—W 7245/7.5

1961

4710